

**CREATE
STIMULATING
ENVIRONMENTS**



HETEROGENEOUS
ACOUSTIC VINYL

**Tapiflex
Excellence
65**

HETEROGENEOUS
COMPACT VINYL

**Acczent
Excellence
80**





Over the years, Tarkett's vinyl floorings have been the leading choice for architects and facility owners to design inspirational and high performance interior environments. Whether in schools, health and aged care facilities or other public buildings, the needs of teachers and children, or staff and patients create a range of operational, social, economic and environmental challenges all of which impact how spaces are designed and built.

Excellence is Tarkett's new heterogeneous vinyl collection created with a holistic approach to the fundamental concepts of project design: colour and coordination, integrated finishing, functional performance, eco-design. The result is a wall-to-floor approach designed for the evolving needs of educational, healthcare, and especially aged care settings.

<http://professionals.tarkett.com/>



+ TABLE OF CONTENTS

4 Create adapted,
inspiring & unique interiors

6 The **warmth** of wood
from **eye** to **foot**

8 Preserve **people's health
& well-being**

10 Make it **easy** and **save time**.
Choose the **all-inclusive** solution

12 **Create safe spaces** with our stairs
solutions and accessibility package

14 Select a **product**
with an **optimal life cycle**

16 **Excellence** collection

24 Coordination in **every detail**

26 A range of **coordinated welding** rods

Create adapted, **inspiring & unique** interiors

Excellence brings you the widest combination of over 117 colour and wood designs in compact and acoustic floorings, for a harmonised project design (both aesthetic and functional). This creates a more personalised learning and living environment through a coordinated selection adapted to age and setting.

Imagine timeless ambiances with easy to combine designs

- Re-invent your project with a large colour and design palette
- **87 all-over colours** from vivid primaries to warm neutrals and pastels and **30 woods** from classic to modern
- An evolution of colours as needs change through ageing
- **Easy combination and coordination** across entire collection

Bring functionality to spaces and favour learning environments

- **Structure spaces** and guide with colours, contrasts and Floorcraft patterns
- Use colours to create **stimulating or cocooning atmospheres**
- Adapt light reflectance value for users' comfort and energy savings





DID YOU KNOW?

Light and bright floorings offering good light reflection values (LRV) can create luminous rooms and trigger energy savings.



The warmth of wood from eye to foot

For a home-like atmosphere, Excellence offers 30 wood designs that create an intimate 'at home' ambiance in living spaces. With this collection you can have enhanced spaces that are easy to keep clean. And with the unique details of our accessories along with our surface finish, Excellence floors offer a genuine sensation.

Enhance your spaces

- **Unique long wood plank** designs (1500 and 1333 mm) in roll format
- Wood designs with a variety from rustic planks to classical 3-strips, all in different colours

Provide an authentic feeling

- **New matt finish** for a natural look
- New realistic surface aspect

Make no compromise on hygiene

- Combining the beauty of wood with excellent cleaning properties; practical roll format with less joints
- Wood designs inspired from our best LVT patterns
- Range of different surface aspects, from deeper embossing to smooth surface, according to hygiene level requirement

Take care of details

- Unique **multi-colour welding rods** to optimize visual impact with our wood collection
- **Pre-formed skirtings & outside corners** for an enhanced aesthetical experience





DID YOU KNOW?

Colours and patterns appear to perform an important function in how Alzheimer's patients perceive their environment:

- pastel & soft tones can encourage a sense of well-being and help to create reassuring settings.
- red and dark colours can be used to establish forbidden perimeters for risk areas



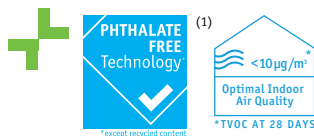
Preserve people's health & well-being

Excellence is demonstrating Tarkett's commitment to design eco-effective products that minimise impact on the environment, contribute to people's well-being and that can be reused at end-of-life.

Improved indoor environment and air quality

Excellence has been designed around **two major eco-innovations**:

- **Phthalate free technology***: phthalate free plasticisers selected by Tarkett can be used for food contact containers and toys intended to be placed in the mouth by children
- **Total VOC emissions below 10 µg/m³**: (more than 100 times lower than the European standard EN-ISO 16000)



Source of well-being

- **19dB impact sound reduction**: less in-room noise & less fatigue
- **Class A (Ln,e,w <65dB) walking sound**: limited rolling trolley noise in aged care facilities and better learning conditions in schools
- **Stable construction with improved impact resistance**: low rolling resistance for wheel chairs, trolleys and hospital beds
- **6% shock absorption**: higher energy restitution for better walking comfort

(1) Progressively for all our professional vinyl products during 2014
* except recycled content





DID YOU KNOW?

Most people spend more than 90% of their time indoors. Indoor levels of pollutants are often two to five times higher than outdoors. This is attributed in large part to an accumulation of volatile organic compounds (VOCs) in indoor environments*.

* Prevalence of asthma and allergies in children, Fact sheet No. 3.1, World Health Organization, ENHIS, Charlotte Wirl and Vladimíra Puklová, May 2007

* Something in the Air, edc The official Magazine for LEED(r) Professional, Diane Martel, Oct. 3 2013



Make it **easy** and **save time**: Choose the **all-inclusive** solution

Tarkett has designed the Excellence collection to provide an integrated solution for every aspect of educational and healthcare project design – from flooring to wall protection and wetroom concepts. That means perfect design matching in compact or acoustic flooring from corridors, to classrooms, treatment rooms or living areas.

Floor options

- Compact or acoustic flooring where comfort matters
- Tiles offer for small areas or offices
- Loose lay solution for easy and economical installation & removal (Acczent Unik)
- Tapiflex Stairs
- Tarkoprotect top film protection

Wall options

- ProtectWALL
- Aquarelle Wall

Accessories options

- Pre-formed skirtings for corridors
- Add-on skirtings for rooms

Accessibility options

- Warning Tile
- Tactile Strip

Ornamental finishing options

- Floorcraft





+ DID YOU KNOW?

Most corridor areas involve time-consuming installation with a welding rod every 2 meters – a frequent source of soiling.

2*0.1m (or 2*0.2m) pre-formed skirtings enable you to install floors lengthwise in 2.2m (or 2.4m) wide corridors so that:

- welding rods are away from the central traffic zone => less soiling
- contrasted pre-formed skirtings can be chosen for guidance.



Create safe spaces with our stairs solutions and accessibility package

Buildings need to enhance the accessibility and safety for all users, to ensure the autonomy and comfort of elderly, disabled or visually impaired people. Tarkett's comprehensive accessibility package lets you design aesthetic solutions that respect safety standards and provide easy to install solutions to guide, orientate and alert people via simple underfoot signage.

Fully coordinated stairs solution

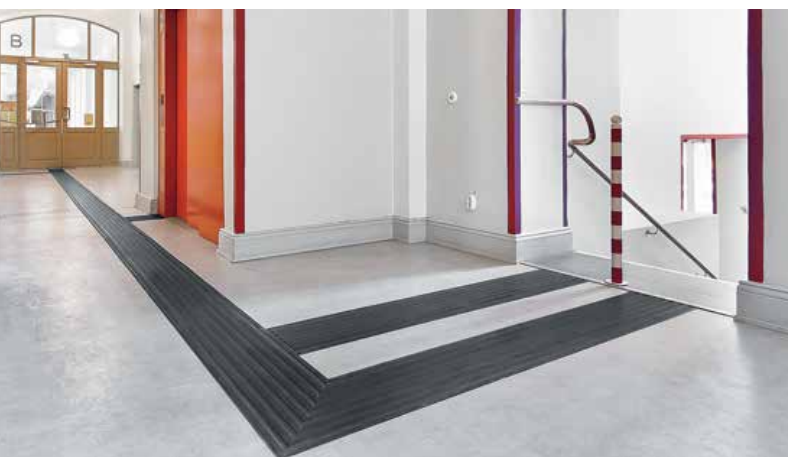
2 solutions available: Glued Tapiflex Stairs and new Self-Adhesive Tapiflex Stairs

- Find the perfect match among 200 original colours and decors of our Essential, Excellence and Evolution collections
- Choose greater contrast references for higher visibility when needed
- Provide underfoot comfort and reduce noise with elastic foam backing
- Ensure safety with specially designed ridges to increase slip resistance
- Ease maintenance and increase durability with highly resistant 1mm pure PVC wear layer

Guidance and safety with new accessories

Secure the movement of visually impaired people with fully coordinated accessibility options:

- Full range of warning tiles for different requirements: square, rectangular and self-adhesive versions for easier installation
- Ready-to-use podotactile studs to be inserted directly into flooring
- Tactile strips to provide pathways in various formats





DID YOU KNOW?

Tarkett offers you custom floor design with Floorcraft service:

- extensive database of designs
- options that can be tailored to suit colour schemes
- the opportunity to develop your own logos and designs



2 TACTILE WARNING TILES

1 STAIRS CORNERS

4 FLOORCRAFT SERVICE

3 TACTILE GUIDE STRIPS

Select a **product** with an **optimal life cycle**

Flooring in schools and aged care facilities has to meet a wide variety of daily demands—resistance, durability, easy maintenance, safety and acoustic comfort. With its compact and acoustic options, the Excellence collection is designed to provide a flooring solution for the functional requirements of every area.

Long-lasting good looking floor

- **XP™ surface treatment:** hard-wearing surface to withstand heavy traffic and daily wear and tear
- **Improved 0.08mm indentation*** on acoustic offer: less marks left by heavy loads
- **No rubber marks** left after a long & continuous rubber pad pressure (e.g. classrooms)

Minimal cleaning & maintenance impact

- **Easy regular maintenance routine:** smooth surface rendering requiring no wax no polish
- **Reduced use of water, energy and chemical detergents** needed for maintenance

Eco-responsible and saving resources on the long term

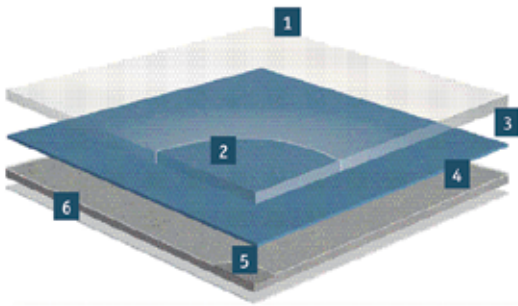
- Excellence collection and manufacturing processes are thought along the principles of a circular economy for the ongoing use of materials:



-13,5% water consumption per sqm
-22% of waste per sqm
-9% of energy consumption per sqm

*best measured value





- 1 TopClean XP PUR reinforcement:**
- 2 Pure PVC transparent wear layer:**
- 3 High definition print :**
- 4 Glass fibre non-woven reinforcement:**
- 5 Solid homogeneous calendered sheet made of recycled vinyl:**
- 6 Polyester backing**

DID YOU KNOW?

You can save time & money on installation with Accent Unik loose-lay solution: no need of glueing, no tacktime, easier recycling and no damage to subfloor.
Available in 7 colours for Class 32 traffic.





Saw Oak - Black

Long Modern Oak - Grege

Long Modern Oak



White

Acoustic: 25018 005
Compact: 25029 005



Black

Acoustic: 25018 006
Compact: 25029 006



Natural

Acoustic: 25018 010
Compact: 25029 010



Natural Brown

Acoustic: 25018 009
Compact: 25029 009



Brown

Acoustic: 25018 007
Compact: 25029 007



Grege

Acoustic: 25018 008
Compact: 25029 008

Saw Oak



Beige

Acoustic: 25018 014
Compact: 25029 014



Natural

Acoustic: 25018 015
Compact: 25029 015



Black

Acoustic: 25018 016
Compact: 25029 016

Vintage Pine



Light

Acoustic: 25018 003
Compact: 25029 003



Dark

Acoustic: 25018 004
Compact: 25029 004

Farmhouse



Warm Grey

Acoustic: 25018 000
Compact: 25029 000



Natural

Acoustic: 25018 001
Compact: 25029 001



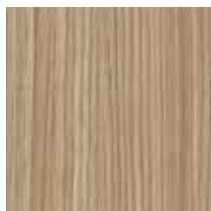
Light Beige

Acoustic: 25018 002
Compact: 25029 003



All-over Wood - Black

All-Over Wood



Grege

Acoustic: 25018 011
Compact: 25029 011



Brown

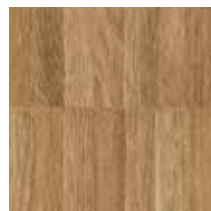
Acoustic: 25018 012
Compact: 25029 012



Black

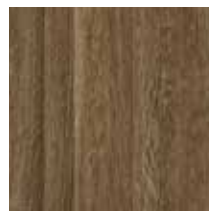
Acoustic: 25018 013
Compact: 25029 013

Strip Oak



Natural

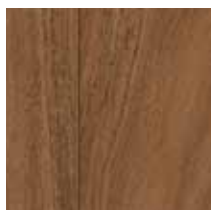
Acoustic: 25019 006
Compact: 25030 006



Brown

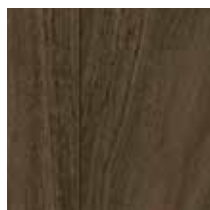
Acoustic: 25019 004
Compact: 25030 004

Walnut



Natural

Acoustic: 25019 007
Compact: 25030 007



Dark

Acoustic: 25019 008
Compact: 25030 008

Cabreuva



Red

Acoustic: 25019 000
Compact: 25030 000



Brown

Acoustic: 25019 003
Compact: 25030 003

Washed Oak



White

Acoustic: 25019 017
Compact: 25030 017
Unik: 3778 017*



Natural

Acoustic: 25019 018
Compact: 25030 018

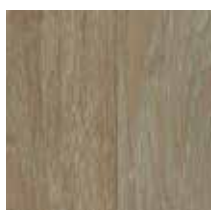
Oak



Light

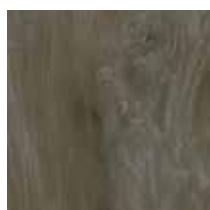
Acoustic: 25019 001
Compact: 25030 001
Unik: 3778 001*

Brushed Oak



Light

Acoustic: 25019 027
Compact: 25030 027



Medium

Acoustic: 25019 026
Compact: 25030 026

Beech



Light

Acoustic: 25019 002
Compact: 25030 002

Maple



Maple

Acoustic: 25019 005
Compact: 25030 005



EXCELLENCE COLLECTION

FERUM / CONCRETE / VARIO / ESQUISSE



Ferum / Concrete - Stell Blue / Chalk

Ferum



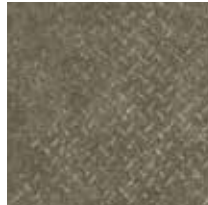
Rust

Acoustic: 25014 003
Compact: 25026 003



Steel Blue

Acoustic: 25014 002
Compact: 25026 002
Acoustic: 25055 002



Dark Grege

Acoustic: 25014 000
Compact: 25026 000



Grey

Acoustic: 25014 001
Compact: 25026 001
Acoustic: 25055 001

Concrete



Chalk

Acoustic: 25011 002
Compact: 25025 002
Unik: 25070 002*



Grey Beige

Acoustic: 25011 003
Compact: 25025 003
Unik: 25070 003*



Dark Brown

Acoustic: 25011 005
Compact: 25025 005



Cool Grey

Acoustic: 25011 000
Compact: 25025 000
Unik: 25070 000*



Warm Grey

Acoustic: 25011 004
Compact: 25025 004



Dark Grey

Acoustic: 25011 001
Compact: 25025 001



Vario - Yellow / Blue



Esquisse - Grey Beige

Vario



Light Beige

- Acoustic: 25015 008
- Compact: 25027 008



Beige

- Acoustic: 25015 004
- Compact: 25027 004
- Acoustic: 25057 004



Light Brown

- Acoustic: 25015 006
- Compact: 25027 006
- Acoustic: 25057 006



Brown

- Acoustic: 25015 003
- Compact: 25027 003



Light Cool Grey

- Acoustic: 25012 009
- Compact: 25027 009
- Acoustic: 25057 009



Cool Grey

- Acoustic: 25015 005
- Compact: 25027 005
- Acoustic: 25057 005



Green

- Acoustic: 25015 000
- Compact: 25027 000



Blue

- Acoustic: 25015 007
- Compact: 25027 007



Yellow

- Acoustic: 25015 001
- Compact: 25027 001



Red

- Acoustic: 25015 002
- Compact: 25027 002

Esquisse



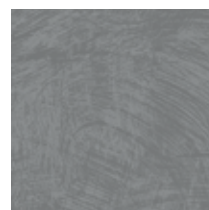
Grey Beige

- Acoustic: 25012 012
- Compact: 3751 012
- Acoustic: 4502 012



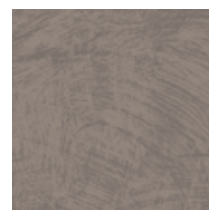
Steel Blue

- Acoustic: 25012 013
- Compact: 3751 013
- Acoustic: 4502 013



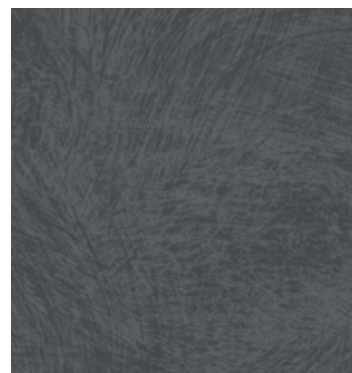
Medium Grey

- Acoustic: 25012 014
- Compact: 3751 014
- Unik: 25071 014*
- Acoustic: 4502 014



Dark Grey

- Acoustic: 25012 017
- Compact: 3751 017



Dark Grey

- Acoustic: 25012 015
- Compact: 3751 015
- Acoustic: 4502 015

EXCELLENCE
COLLECTION *KRAFT / SKETCH / MEMO*



Kraft - Light Purple

Kraft



Beige

Acoustic: 25014 008
Compact: 25026 008



Light Beige

Acoustic: 25014 009
Compact: 25026 009



Warm Grey

Acoustic: 25014 010
Compact: 25026 010



Cool Grey

Acoustic: 25014 013
Compact: 25026 013



Dark Warm Grey

Acoustic: 25014 011
Compact: 25026 011



Dark Cool Grey

Acoustic: 25014 007
Compact: 25026 007



Dark Purple

Acoustic: 25014 021
Compact: 25026 021



Medium Purple

Acoustic: 25014 018
Compact: 25026 018



Blue

Acoustic: 25014 019
Compact: 25026 019



Light Purple

Acoustic: 25014 017
Compact: 25026 017



Blue Green

Acoustic: 25014 015
Compact: 25026 015



Yellow Green

Acoustic: 25014 005
Compact: 25026 005



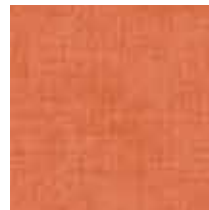
Yellow Beige

Acoustic: 25014 016
Compact: 25026 016



Yellow

Acoustic: 25014 006
Compact: 25026 006



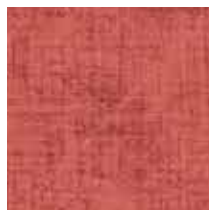
Orange

Acoustic: 25014 014
Compact: 25026 014



Cardinal Red

Acoustic: 25014 012
Compact: 25026 012



Red

Acoustic: 25014 004
Compact: 25026 004



Light Blue

Acoustic: 25014 020
Compact: 25026 020



Sketch - Blue



Memo - Black, Sketch - Grey

Sketch



Green Red

Acoustic: 25012 022
Compact: 3751 022



Grey

Acoustic: 25012 023
Compact: 3751 023



Blue

Acoustic: 25012 024
Compact: 3751 024



Green

Acoustic: 25012 025
Compact: 3751 025



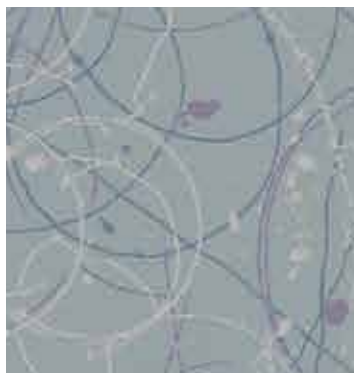
Red

Acoustic: 25012 038
Compact: 3751 038



Purple

Acoustic: 25012 026
Compact: 3751 026



Purple Mint

Acoustic: 25012 021
Compact: 3751 021

Memo



Black

Acoustic: 25017 001
Compact: 25028 001



White

Acoustic: 25017 000
Compact: 25028 000

EXCELLENCE COLLECTION



Uni - Orange Red / SKetch - Green Red

Matrix²



Very Light Beige

Acoustic: 25012 028
Compact: 3751 028



Dark Beige

Acoustic: 25012 027
Compact: 3751 027



Phospho

Acoustic: 4514 101
Compact: 25032 101



Dark Grey

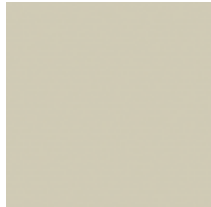
Acoustic: 25012 135
Compact: 3751 019



Graphite

Acoustic: 25012 000
Compact: 3751 000

Uni



Very Light Beige

Acoustic: 25016 007
Compact: 4601 007



Dark Beige

Acoustic: 25016 018
Compact: 4601 018



Medium Grey

Acoustic: 25016 017
Compact: 4601 017



Warm Grey

Acoustic: 25016 025
Compact: 4601 025



Dark Grey

Acoustic: 25016 016
Compact: 4601 016

Matrix²



Green

Acoustic: 25012 032
Compact: 3751 032



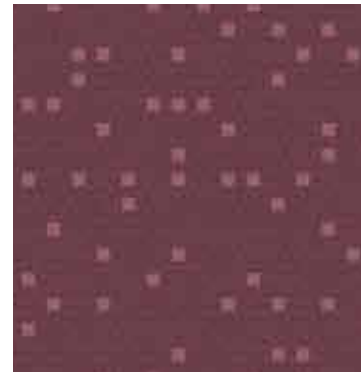
Grass Green

Acoustic: 25012 035
Compact: 3751 035



Lemon Yellow

Acoustic: 25012 030
Compact: 3751 030



Cardinal Red

Acoustic: 25012 003
Compact: 3751 003

Uni



Green

Acoustic: 25016 002
Compact: 4601 002



Grass Green

Acoustic: 25016 009
Compact: 4601 009



Lemon Yellow

Acoustic: 25016 019
Compact: 4601 019



Matrix² - Medium Blue / Uni - Medium Blue

Matrix²



Night Blue

Acoustic: 25012 037
Compact: 3751 037



Marin Blue

Acoustic: 25012 036
Compact: 3751 036



Medium Blue

Acoustic: 25012 034
Compact: 3751 034



Mint

Acoustic: 25012 033
Compact: 3751 033



Aubergine

Acoustic: 25012 031
Compact: 3751 031

Uni



Night Blue

Acoustic: 25016 008
Compact: 4601 008



Dark Blue

Acoustic: 25016 029
Compact: 4601 029



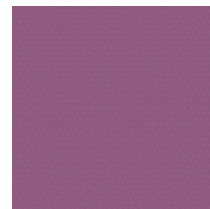
Medium Blue

Acoustic: 25016 001
Compact: 4601 001



Mint

Acoustic: 25016 003
Compact: 4601 003



Aubergine

Acoustic: 25016 004
Compact: 4601 004

Matrix²



Orange Red

Acoustic: 25012 029
Compact: 3751 029



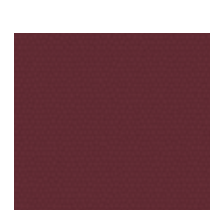
Red

Acoustic: 25012 148
Compact: 3751 148



Rosa

Acoustic: 25012 006
Compact: 3751 006



Cardinal Red

Acoustic: 25016 015
Compact: 4601 015

Uni



Orange Red

Acoustic: 25016 000
Compact: 4601 000



Dark Red

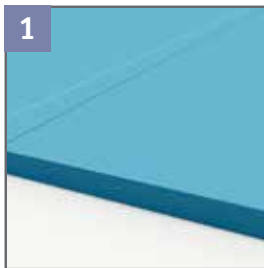
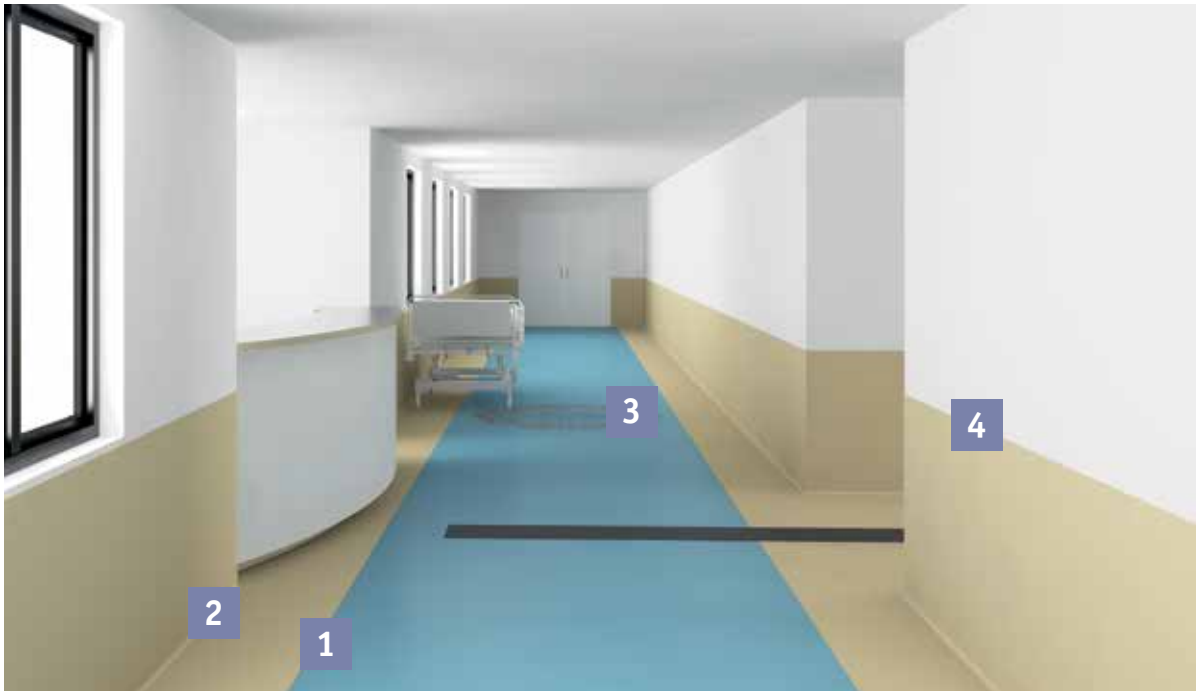
Acoustic: 25016 010
Compact: 4601 010



Rosa

Acoustic: 25016 014
Compact: 4601 014

COORDINATION IN EVERY DETAIL



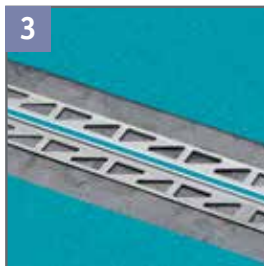
1 WELDING RODS
 Secures the junction between 2 rolls of flooring or wall and floor coverings.
 See left page for matching colours.



2 SET-ON SKIRTING
 KS 61: PVC semi-rigid skirting for decorative use.
Article code: 1411 + colour code



Alternative:
 IS 60: Rigid skirting made on MDF support. Floor covering to be inserted for perfect colour matching. To be glued.
Medium Grey: 1448 000 - Light Grey: 1448 001 - White: 1448 000



3 EXPANSION JOINT
 Expansion joint sections offer a perfect solution to avoid tear or dish from screed.



4 PROTECTWALL & CAP
 PROTECTWALL: Protects the wall from impacts.
 CAP: Provides a perfect finish and protects the edge of the wall covering.



TARKOSPRAY

Water based and easy to use flooring adhesive as a spray: 70% faster to apply, immediately ready for use and ideal for easy renovation, and environmental friendly. 1 box of 6 cans + 1 trigger.

France / Germany / Netherlands: 1460 001

United Kingdom / Poland / Italy / Spain / Sweden / Portugal: 1460 005

TARKOPROTECT

Easy to use self-adhesive solution to protect Tarkett floorcoverings before traffic: absorbs shocks, waterproof, and reduces scratches. Available in white in 2 versions:

Tarkoprotect 180: 24990 000

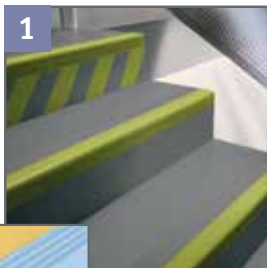
Weight: 180g/m²

Ordering unit: 1 roll 1mx50lm

Tarkoprotect 240: 24991 000

Weight: 240g/m²

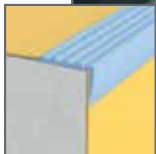
Ordering unit: 1 roll 1mx25lm



TAPIFLEX STAIRS

Coordinated vinyl stair solution to offer safety and noise reduction in all buildings.

NEW: also available in auto-adhesive version



Alternative:

Flexible PVC stair nosing. Cut to size on site and fixed with adhesive before floor covering.



TACTILE GUIDE

Specially designed for visually impaired people to help finding their way with blind stick.

Available in various formats and colours.

Tactile guide: 1440 / 1497 + colour code

Linear strip SA: 1440 250

Vibration strip SA: 1440 150



WARNING TILE

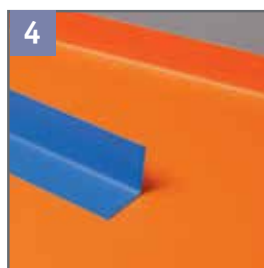
Helps recognize a change in level for visually impaired people, in accordance with regulatory requirements.

Available in various formats and colours.

Pododactile square tile SA: 1440 450

Pododactile rectangle tile SA: 1440 350

Pododactile studs SA: 1440 050



PRE-FORMED SKIRTING

Preformed set-in skirting made of PVC flooring, reinforced with polymere on backside. Welded to the floor covering and glued to the wall.

60/80/100 x 100/200 x 2 400mm.

Available on request with all colours

Art codes: Acoustic

100 x 100mm: 26611

100 x 80mm: 26612

100 x 60mm: 26613

Compact

200 x 100mm: 26632

100 x 100mm: 26614

100 x 80mm: 26615

100 x 60mm: 26616



TRANSITION PROFILE

Used to join different floorings of the same or slightly different heights.

TTP:Dark grey: 1452 000

Light grey: 1452 001

White: 1452 002



Alternative:

PVC cove former: PA 20: 1441 000 - PA30: 1442 000 - PA40: 26618 001

A RANGE OF COORDINATED WELDING RODS

	Colour name	Colour code	NCS	Welding rod Plain	Welding rod Multicolour	Corresponding skirting KS61
SKETCH	Purple Mint	3751 021	S 4502-B	1291 928	—	1411 007 or 012
	Green Red	3751 022	S 3502-Y	1287 524	—	1411 007 or 012
	Grey	3751 023	S 2502-B	1287 648	—	1411 007 or 012
	Blue	3751 024	S 3040-R90B	1287 172	—	1411 038
	Green	3751 025	S 2050-G40Y	1287 493	—	1411 007 or 012
	Purple	3751 026	S 5030-R30B	1287 161	—	1411 029
	Red	3751 038	S 2060-Y80R	1287 140	—	1411 019
MATRIX²	Graphite	3751 000	S 7005-R80B	1288 327	—	1411 009
	Cardinal Red	3751 003	S 6020-R	1287 521	—	1411 007 or 012
	Rosa	3751 006	S 2030-R10B	1287 141	—	1411 007 or 012
	Dark Grey	3751 019	S 5502-R	1291 788	—	1411 007 or 012
	Dark Beige	3751 027	S 4005-Y20R	1287 497	—	1411 013
	Very Light Beige	3751 028	S 3005-G80Y	1287 643	—	1411 027
	Orange Red	3751 029	S 2060-Y70R	1287 140	—	1411 007 or 012
	Lemon Yellow	3751 030	S 2050-Y10R	1287 315	—	1411 028
	Aubergine	3751 031	S 4030-R30B	1287 161	—	1411 029
	Green	3751 032	S 5020-G50Y	1287 305	—	1411 034
	Mint	3751 033	S 3030-B10G	1287 641	—	1411 044
	Medium Blue	3751 034	S 3050-R90B	1287 172	—	1411 038
	Grass Green	3751 035	S 2050-G30Y	1287 644	—	1411 033
	Marin Blue	3751 036	S 5030-R80B	1287 307	—	1411 007 or 012
	Night Blue	3751 037	S 7010-R90B	1287 642	—	1411 037
	Red	3751 148	S 2060-Y90R	1287 463	—	1411 019
	Phospho	25032 101	S 3000-N	1287 523	—	1411 011
ESQUISSE	Grey Beige	3751 012	S 2002-Y50R	1287 279	—	1411 027
	Light Grey	3751 013	S 4502-Y	1294 071	—	1411 007 or 012
	Medium Grey	3751 014	S 6000-N	1287 394	—	1411 009
	Dark Grey	3751 015	S 7000-N	1287 167	—	1411 008
	Light Chocolate	3751 017	S 6005-Y50R	1287 458	—	1411 013
VARIO	Green	25027 000	S 6005-G20Y	1287 659	—	1411 007 or 012
	Yellow	25027 001	S 3050-Y10R	1287 430	—	1411 028
	Red	25027 002	S 4040-R	1287 455	—	1411 018
	Brown	25027 003	S 8005-Y50R	1287 013	—	1411 014
	Beige	25027 004	S 3005-Y20R	1287 178	—	1411 007 or 012
	Cool Grey	25027 005	S 6005-G20Y	1288 301	—	1411 007 or 012
	Light Brown	25027 006	S 6005-Y20R	1287 433	—	1411 013
	Blue	25027 007	S 7010-R90B	1287 409	—	1411 007 or 012
	Light Beige	25027 008	S 2500-N	1288 303	—	1411 012
	Light Cool Grey	25027 009	S 3502-B	1292 447	—	1411 007 or 012
MEMO	White	25028 000	S 1005-R	1292 801	—	1411 007 or 012
	Dark Blue	25028 001	S 7010-R90B	1287 527	—	1411 037
KRAFT	Red	25026 004	S 3050-Y90R	1288 376	—	1411 018
	Yellow Green	25026 005	S 3040-G70Y	1287 464	—	1411 007 or 012
	Yellow	25026 006	S 2050-Y	1287 661	—	1411 028
	Dark Cool Grey	25026 007	S 5502-B	1291 216	—	1411 009
	Beige	25026 008	S 3010-Y	1287 443	—	1411 007 or 012
	Light Beige	25026 009	S 3005-Y20R	1287 402	—	1411 012
	Warm Grey	25026 010	S 4502-Y	1287 254	—	1411 007 or 012
	Dark Warm Grey	25026 011	S 4502-Y	1288 388	—	1411 007 or 012
	Cardinal Red	25026 012	S 6020-R	1287 020	—	1411 007 or 012
	Cool Grey	25026 013	S 4005-R80B	1291 928	—	1411 010
	Orange	25026 014	S 3040-Y60R	1291 861	—	1411 007 or 012
	Blue Green	25026 015	S 4020-G50Y	1287 588	—	1411 034
	Yellow Beige	25026 016	S 2030-Y	1287 658	—	1411 007 or 012
	Light Purple	25026 017	S 4020-R50B	1287 081	—	1411 031
	Medium Purple	25026 018	S 5020-R60B	1287 485	—	1411 007 or 012
	Blue	25026 019	S 5005-Y20R	1287 512	—	1411 041
	Light Blue	25026 020	S 3020-R80B	1287 252	—	1411 007 or 012
Dark Purple	25026 021	S 7005-R80B	1287 662	—	1411 007 or 012	



	Colour name	Colour code	NCS	Welding rod Plain	Welding rod Multicolour	Corresponding skirting KS61	
FERUM	Dark Grege	25026 000	S 6005-Y20R	1287 546	—	1411 013	
	Light Beige	25026 001	S 2005-Y30R	1287 402	—	1411 027	
	Steel Blue	25026 002	S 6500-N	1287 077	—	1411 008	
	Rost	25026 003	S 5020-Y40R	1287 032	—	1411 022	
STEEL	Grey	3764 001	S 4500-N	1287 454	—	1411 007 or 012	
CONCRETE	Cool Grey	25025 000	S 3502-R	1287 254	—	1411 010	
	Dark Grey	25025 001	S 6502-Y	1297 647	—	1411 008	
	Chalk	25025 002	S 2005-Y50R	1291 214	—	1411 007 or 012	
	Grey Beige	25025 003	S 3005-Y20R	1291 839	—	1411 007 or 012	
	Warm Grey	25025 004	S 6005-Y20R	1287 537	—	1411 007 or 012	
	Dark Brown	25025 005	S 8005-Y20R	1287 660	—	1411 014	
UNI	Orange Red	4601 000	S 2060-Y70R	1287 646	—	1411 007 or 012	
	Medium Blue	4601 001	S 3050-R90B	1287 547	—	1411 038	
	Green	4601 002	S 5020-G50Y	1287 305	—	1411 034	
	Mint	4601 003	S 3030-B10G	1288 306	—	1411 044	
	Aubergine	4601 004	S 4030-R30B	1287 645	—	1411 029	
	Very Light Beige	4601 007	S 6005-G80Y	1287 643	—	1411 027	
	Night Blue	4601 008	S 7010-R90B	1287 527	—	1411 037	
	Grass Green	4601 009	S 2050-G30Y	1287 644	—	1411 007 or 012	
	Dark Red	4601 010	S 2070-Y90R	1287 030	—	1411 019	
	Pink	4601 014	S 5040-R10B	1287 141	—	1411 007 or 012	
	Cardinal Red	4601 015	S 6020-R	1287 521	—	1411 007 or 012	
	Dark Grey	4601 016	S 6020-R80B	1288 327	—	1411 009	
	Medium Grey	4601 017	S 3502-B	1288 341	—	1411 011	
	Dark Beige	4601 018	S 4005-Y20R	1287 497	—	1411 007 or 012	
	Lemon Yellow	4601 019	S 2050-Y10R	1287 315	—	1411 028	
	Warm Grey	4601 025	S 5500-N	1287 394	—	1411 007 or 012	
	Dark Blue	4601 029	S 6020-R80B	1287 580	—	1411 039	
	OAK	Light	25030 001	S 3030-Y20R	1287 505	1290 187	1411 007 or 012
	BEECH	Light	25030 002	S 3020-Y20R	1294 315	—	1411 007 or 012
	MAPLE	Maple	25030 005	S 2020-Y10R	1287 431	—	1411 025
WASHED OAK	White	25030 017	S 4010-Y30R	1289 803	1290 099	1411 007 or 012	
	Natural	25030 018	S 4020-Y10R	1287 437	1290 099	1411 007 or 012	
BRUSHED OAK	Medium	25030 026	S 6005-Y20R	1287 546	—	1411 013	
	Light	25030 027	S 5005-Y20R	1287 447	—	1411 007 or 012	
FARMHOUSE	Warm Grey	25029 000	S 4010-Y30R	1287 501	1290 306	1411 007 or 012	
	Natural	25029 001	S 5020-Y20R	1287 477	1290 301	1411 007 or 012	
	Light Beige	25029 002	S 3010-Y30R	1292 855	1290 308	1411 007 or 012	
CABREUVA	Red	25030 000	S 4030-Y40R	1287 050	—	1411 023	
	Brown	25030 003	S 5020-Y40R	1287 032	—	1411 007 or 012	
VINTAGE PINE	Light	25029 003	S 2002-Y50R	1287 279	1290 179	1411 012	
	Dark	25029 004	S 3010-Y20R	1287 539	1290 175	1411 007 or 012	
STRIP OAK	Brown	25030 004	S 6010-Y30R	1287 475	—	1411 015	
	Natural	25030 006	S 4030-Y20R	1287 011	—	1411 007 or 012	
LONG MODERN OAK	White	25029 005	S 3005-Y20R	1289 538	1290 307	1411 007 or 012	
	Black	25029 006	S 7502-R	1287 576	1290 310	1411 007	
	Brown	25029 007	S 7010-Y10R	1287 013	1290 309	1411 007 or 012	
	Grege	25029 008	S 5010-Y10R	1287 540	1290 304	1411 021	
	Natural Brown	25029 009	S 5020-Y30R	1287 664	1290 311	1411 021	
	Natural	25029 010	S 5020-Y30R	1287 153	1290 303	1411 007 or 012	
ALLOVER WOOD	Grege	25029 011	S 4010-Y30R	1287 437	—	1411 007 or 012	
	Brown	25029 012	S 5010-Y30R	1287 492	—	1411 007 or 012	
	Black	25029 013	S 6005-Y80R	1287 548	—	1411 008	
SAW OAK	Beige	25029 014	S 4020-Y20R	1287 426	1290 305	1411 007 or 012	
	Natural	25029 015	S 4020-Y20R	1287 011	1290 301	1411 007 or 012	
	Black	25029 016	S 6005-Y20R	1287 013	1290 302	1411 007 or 012	
WALNUT	Natural	25030 007	S 5030-Y50R	1287 287	—	1411 015	
	Dark	25030 008	S 7010-Y30R	1287 663	1290 139	1411 014	



HETEROGENEOUS
ACOUSTIC VINYL

Tapiflex Excellence 65

Specification

Printed vinyl floorcovering on glass fibre non woven PVC foam backing
Polyurethane reinforcement.
Product standard: ISO 11638 / EN 651.

HETEROGENEOUS
COMPACT VINYL

Accent Excellence 80

Specification

Compact flexible vinyl floorcovering glass fibre reinforced, printed
Polyurethane reinforcement.
Product standard: ISO 10582 - EN 649.

CERTIFICATION & CLASSIFICATION	STANDARDS	Tapiflex Excellence 65 (Sheet)	Tapiflex Tiles 65	Accent Excellence 80 (Sheet)	Accent Unik (Sheet) Loose Lay Offer
Type of floorcovering	ISO 11638 / EN 651	Heterogeneous Acoustic Vinyl	Heterogeneous Acoustic Vinyl	-	-
Wear Layer Binder Content	ISO 10582	Type I	Type I	Heterogeneous Compact Vinyl Type I	Heterogeneous Compact Vinyl Type I
CE Certification	EN 14041	Yes	Yes	Yes	Yes
Classification	ISO 10874 - EN 685	34	34	34-43	32
TECHNICAL CHARACTERISTICS	STANDARDS	Tapiflex Excellence 65 (Sheet)	Tapiflex Tiles 65	Accent Excellence 80 (Sheet)	Accent Unik (Sheet) Loose Lay Offer
Surface Treatment		TopClean XP™	TopClean XP™	TopClean XP™	TopClean XP™
Total thickness	ISO 24346 - EN 428	3.05 mm	3.45 mm	2.00 mm	2.10 mm
Wear layer thickness	ISO 24340 - EN 429	0.65 mm	0.65 mm	0.80 mm	0.80 mm
Total weight	ISO 23997 - EN 430	2 850 g/m²	3 410 g/m²	3 100 g/m²	3 140 g/m²
Form of delivery	ISO 24344 - EN 426 Sheet (rolls) ISO 24342 - EN 427 Tiles (box)	approx. 23 running metres x 200 cm	- 50 x 50 cm - 20 tiles/box = 5.00 m²	approx. 23 running metres x 200 cm	approx. 23 running metres x 200 cm
TECHNICAL PERFORMANCES	STANDARDS	Tapiflex Excellence 65 (Sheet)	Tapiflex Tiles 65	Accent Excellence 80 (Sheet)	Accent Unik (Sheet) Loose Lay Offer
Dimensional stability	EN 434	< 0.10%	< 0.10%	< 0.10%	< 0.10%
Reaction to fire	EN 13501-1	Bfl s1 on fibrement substrate A2fl Cfl s1 on woodchip substrate ≥ 19mm	Bfl s1 on fibrement substrate A2fl Cfl s1 on woodchip substrate ≥ 19mm	Bfl s1 on fibrement substrate A2fl Bfl s1 on woodchip substrate ≥ 19mm	Bfl s1 loose-laid over any A2fl or A1fl substrate with density ≥ 1200 kg/m³ (on cement) Bfl s1 loose-laid over any derivative wood substrate with density ≥ 470 kg/m³
Curl resultant to heat	ISO 23999 - EN 434	≤ 8 mm	≤ 2 mm	≤ 8 mm	≤ 8 mm
Residual indentation	ISO 24343-1 - EN 433	Required value: ≤ 0.20 mm Average measured value*: 0.10 mm Best measured value*: 0.08 mm	Required value: ≤ 0.20 mm Average measured value*: 0.12 mm Best measured value*: 0.10 mm	Required value: ≤ 0.10 mm Average measured value*: 0.03 mm	Required value: ≤ 0.10 mm Average measured value*: 0.03 mm
Impact sound reduction	EN ISO 140-8 EN ISO 717-2	ΔLw 19 dB	ΔLw 19 dB	ΔLw 3 dB	ΔLw 4 dB
Acoustical Improvement	NF S31-074	L _{n,e,w} < 65 dB - Class A	L _{n,e,w} < 65 dB - Class A	L _{n,e,w} < 85 dB - Class C	L _{n,e,w} < 75 dB - Class B
Castor wheel test	ISO 4918 - EN 425	No damage	No damage	No damage	No damage
Furniture leg	EN 424	No damage	No damage	No damage	No damage
Electrostatic properties	EN 1815 EN 1081	< 2 kV on concrete R1 > 10 ⁹ Ω	< 2 kV on concrete R1 > 10 ⁹ Ω	< 2 kV on concrete R1 > 10 ⁹ Ω	< 2 kV on concrete R1 > 10 ⁹ Ω
Total VOC emissions	AgBB/DIBt	≤ 10 µg/m³ (after 28 days)	≤ 10 µg/m³ (after 28 days)	≤ 10 µg/m³ (after 28 days)	≤ 10 µg/m³ (after 28 days)
Thermal resistance Underfloor heating	EN 12667	0.04 m² K/W Suitable	0.04 m² K/W Suitable	0.02 m² K/W Suitable	0.02 m² K/W Suitable
Light fastness	EN ISO 105-B02	≥ 6	≥ 6/8	≥ 6	≥ 6
Chemical resistance	ISO 26987 - EN 423	High resistance	High resistance	High resistance	High resistance
Hygiene		Does not contribute to infection spreading	Does not contribute to infection spreading	Does not contribute to infection spreading	Does not contribute to infection spreading
Slip resistance	DIN 51130 EN 13893	R9/R10 Woods ≥ 0,3	R9 ≥ 0,3	R9/R10 Woods ≥ 0,3	R9/R10 Woods ≥ 0,3
Colours		117	10	117	6

The above information is subject to modification for the benefit of further improvement. (10/14).

*For information - not binding

Tarkett's instructions regarding installation, cleaning and maintenance should be observed. Please contact Tarkett at the address shown for these instructions.

CUSTOMS TARIFF : 48205000000F

Our Sustainability tag explains the content of our products and how they contribute to our sustainability strategy and human well-being.



■ **WESTERN EUROPE:** Austria: Tarkett Holding GmbH, Niederlassung Wien – Tel. +43 1 47 88 062 ■ **Belgium:** Tarkett France Belux – Tel. +32 16 35 98 80 ■ **Denmark:** Tarkett A/S – Tel. +45 43 90 60 11 ■ **Finland:** Tarkett Oy – Tel. +358 9 4257 9000 ■ **France:** Tarkett SAS – Tel. +33 1 41 20 42 49 ■ **Germany:** Tarkett Holding GmbH, Bereich Objekt – Tel. +49 62 33 810 ■ **Greece:** Tarkett Monoprosopi Ltd – Tel. +30 210 6745 340 ■ **Italy:** Tarkett S.p.A. – Tel. +39 0744 7551 ■ **Luxembourg:** Tarkett GDL SA – Tel. +352 949 211 8804 ■ **Netherlands:** Tarkett Holding GmbH, Vestiging Nederland – Tel. +31 416 68 54 91 ■ **Norway:** Tarkett AS – Tel. +47 32 20 92 00 ■ **Portugal:** Tarkett SA – Tel. +351 21 427 64 20 ■ **Spain:** Tarkett Floors S.L. – Tel. +34 91 358 00 35 ■ **Sweden:** Tarkett Sverige AB – Tel. +46 771 25 19 00 ■ **Switzerland:** Tarkett Holding GmbH, Bereich Objekt Schweiz – Tel. +41 043 233 79 24 ■ **Turkey:** Tarkett Aspen – Tel. +90 212 213 65 80 ■ **United Kingdom:** Tarkett Ltd – Tel. +44 (0) 1622 854 040 ■ **EASTERN EUROPE:** **Baltic Countries:** Tarkett Baltics – Tel. +370 37 262 220 ■ **Czech Republic:** Tarkett France SAS, org. slozka – Tel. +420 271 001 602 ■ **Hungary:** Tarkett France SAS – Tel. +36 1 437 8150 ■ **Poland:** Tarkett Polska Sp. z o.o. – Tel. +48 22 639 31 68 ■ **Russian Federation:** ZAO Tarkett RUS – Tel. +7 495 775 3737 ■ **Slovakia:** Tarkett France SAS, org. zlozka – Tel. +421 248 291 317 ■ **South East Europe:** Tarkett Trade d.o.o. – Tel. +381 21 7557 649 (44) 569 12 21 ■ **Ukraine:** Tarkett UA – Tel. +38 (0) 44 569 12 21 ■ **ASIA AND OCEANIA:** Australia: Tarkett Australia Pty Ltd – Tel. +61 2 88 53 12 00 ■ **China:** Tarkett Floor Covering (Shanghai) Co. Ltd. – Tel. +86 (21) 60 95 68 38 ext 841 ■ **North East Asia:** Tarkett Hong Kong Limited – Tel. +852 2511 8716 ■ **India:** Tarkett France (India Branch) – Tel. +91 11 4352 4073 ■ **South East Asia:** Tarkett Flooring Singapore Pte. Ltd. – Tel. +65 6346 1585 ■ **AFRICA:** Tarkett International – Tel. +33 1 41 20 41 01 ■ **MIDDLE EAST:** Tarkett Middle East – Tel. +961 1 51 3363/4 ■ **Israel:** Tarkett International – Tel. +33 1 41 20 41 01 ■ **NORTH AMERICA:** USA: Tarkett Inc. – Tel. +1 713 869 5811 / Johnssonite – Tel. +1 440 543 8916 ■ **Canada:** Tarkett Inc. – Tel. +1 450 293 173 ■ **LATIN AMERICA:** Brazil: Tarkett – Tel. 55 12 3954 7108 ■ **Argentina - Chile - Uruguay:** Tarkett Latam Mercosur – Tel. 54 11 47 08 07 72 / 54 9 11 44 46 88 82 ■ **Colombia - Panama - Bolivia - Ecuador - Paraguay - Peru - Trinidad and Tobago:** Tarkett – Tel. 55 11 9 8410 9310 ■ **Mexico / Central America:** Tarkett Latam Mexico – Tel. 52 735 392-3948



www.professionals.tarkett.com