

CARRÉ MODULAR

Ecoline by ege



ege[®]

we create more than carpets



Three evocative design stories

ORGANIC MOOD 4

DYNAMIC LINES 20

TYPO-GRAPHIC 38

Colour information 52

Technical specifications 55



GREEN

CARRÉ MODULAR Ecoline by ege

Reduce, reuse and recycle

As concerns regarding the environment continue to grow, ege has embraced the challenge to reduce, reuse and recycle. With a guaranteed minimum of 70% recycled fibre content, CARRÉ MODULAR from ege presents a viable option for implementing green design in commercial interiors. CARRÉ MODULAR offers a unique range of carpet tiles tailored to meet high environmental performance demands while ensuring an aesthetically pleasing and long-lasting flooring solution.

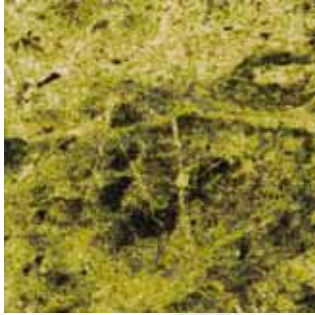
The 70% recycled content is recovered from ege's own waste yarn, thus presenting an excellent solution for reducing the environmental impact of the production cycles and for reducing the environmental footprint of the carpet.

Embracing the environmental challenge

The use of Econyl 70 carpet fibre allows for a reduction of more than 50% of the energy embedded inside the yarn. In addition, a reduction of more than 50% of the greenhouse warming effect potentially related to the yarn is achieved.

CARRÉ MODULAR provides an outstanding level of recycled content without compromising on performance and style. Whether being an interior designer, architect or specifier, the outstanding performance properties of the collection present a viable option for "green" thinking in today's commercial interiors.

ORGANIC MOOD



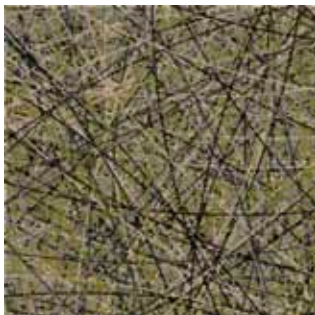
RFM5275C6545 Natural Stone

A group of evocative designs interpreting elements found in nature. These designs mirror organic structures from smooth to rough inspired by stone, water and wood. The ORGANIC MOOD designs bring out natural components in interiors and surroundings making it perfect for resorts, hotels and other environments with a nature-inspired style.

A rustic choice that invites to feel relaxed, comfortable and free.



RFM5295C6515 Wood Weave



RFM5295C6566 Trails



RFM5295C6537 Wavy Shells



RFM5295C6556 Rainy Ocean



RFM5295C6526 Slate



Organic Mood

RFM5275C6542 Natural Stone

2 x 2 tiles



Highlight	Main colours			Dark
C1	C2	C3	C4	C5
GB1	GB1	GB3	GB4	GB5

Effect colours		
C6	C7	C8
AC16	AC15	GB4

Recolour effect colours slightly darker than main colours

RFM5295C6522 Slate

2 x 2 tiles



Dark				Highlight		
C1	C2	C3	C4	C5	C6	C7
GB4	GB4	GB12	AC40	GB3	GB2	GB1

RFM5275C6562 Trails

2 x 2 tiles



Dark					Highlight	
C1	C2	C3	C4	C5	C6	C7
GB5	GB5	GB4	GB4	AC14	AC13	GB3

RFM5275C6552 Rainy Ocean

2 x 2 tiles



Design		Backgr.	Shadow	Effect
C1	C2	C3	C4	C5
GB3	AC43	GB5	GB4	AC15

Recolour effect in contrast to the background

RFM5275C6523 Slate

2 x 2 tiles



Dark							Highlight	
C1	C2	C3	C4	C5	C6	C7		
GB5	GB5	GB4	AC13	GB3	GB2	GB1		

RFM5295C6563 Trails

2 x 2 tiles



Dark							Highlight	
C1	C2	C3	C4	C5	C6	C7		
GB4	AC47	GB12	AC40	AC40	GB3	GB10		

RFM5295C6512 Wood Weave

2 x 2 tiles



Medium		Dark		Dark						Highlight	
C1	C2	C3	C4	C5	C6	C7	C8				
AC16	AC40	GB12	GB4	GB12	AC40	AC16	GB2				

RFM5275C6532 Wavy Shells

2 x 2 tiles



Dark							Highlight	
C1	C2	C3	C4	C5	C6	C7		
GB5	AC31	GB4	GB3	AC16	GB1	GB1		

Organic Mood

RFM5220C6543 Natural Stone

2 x 2 tiles



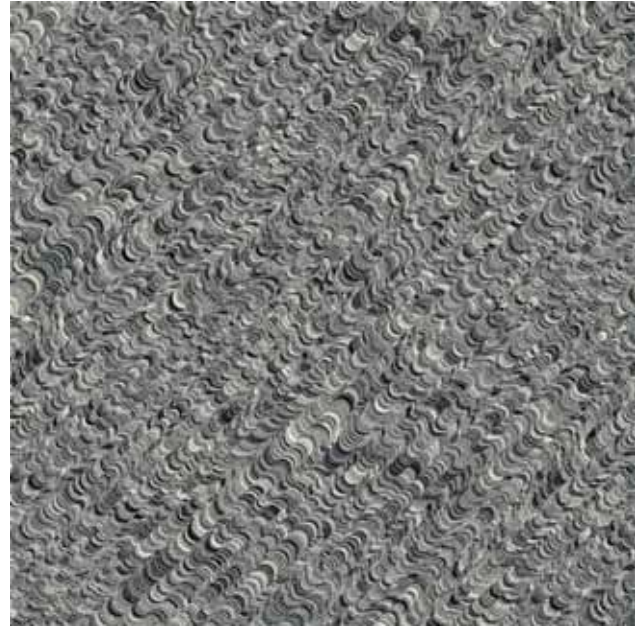
Highlight	Main colours			Dark
C1	C2	C3	C4	C5
GB1	GB1	GB8	BL8-9	AC77

Effect colours		
C6	C7	C8
GB1	GB8	BL8-9

Recolour effect colours slightly darker than main colours

RFM5220C6533 Wavy Shells

2 x 2 tiles



Highlight						Dark
C1	C2	C3	C4	C5	C6	C7
GB1	AC53	GB8	GB8	BL8-9	GB9	GB12

RFM5220C6564 Trails

2 x 2 tiles



Dark						Highlight
C1	C2	C3	C4	C5	C6	C7
GB12	AC77	GB9	BL8-9	GB8	AC53	GB1

RFM5275C6534 Wavy Shells

2 x 2 tiles



Highlight					Dark	
C1	C2	C3	C4	C5	C6	C7
GB1	GB1	GB3	GB3	AC43	AC43	GB5

RFM5220C6524 Slate

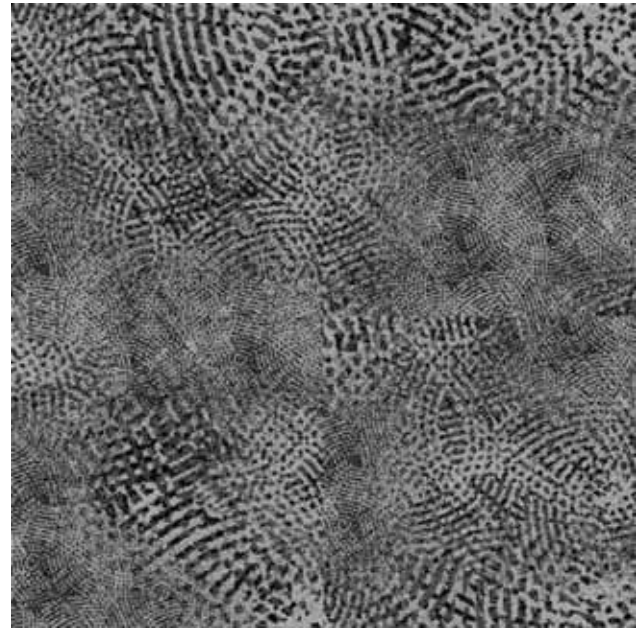
2 x 2 tiles



Dark						Highlight
C1	C2	C3	C4	C5	C6	C7
GB12	AC77	GB9	BL8-9	GB8	AC53	GB1

RFM5220C6553 Rainy Ocean

2 x 2 tiles



Design		Backgr.	Shadow	Effect	Recolour effect in contrast to the background
C1	C2	C3	C4	C5	
GB8	AC53	GB9	GB12	AC53	

RFM5295C6513 Wood Weave

2 x 2 tiles



Dark							Highlight
C1	C2	C3	C4	C5	C6	C7	C8
AC17	GB4	AC17	GB3	AC46	GB2	AC13	GB1

RFM5295C6554 Rainy Ocean

2 x 2 tiles



Design		Backgr.	Shadow	Effect	Recolour effect in contrast to the background
C1	C2	C3	C4	C5	
GB2	AC15	GB4	GB3	AC13	

Organic Mood

RFM5295C6544 Natural Stone

2 x 2 tiles



Highlight	Main colours				Dark
C1	C2	C3	C4	C5	
GB1	GB1	GB9	AC38	AC42	

Effect colours		
C6	C7	C8
AC13	GB2	GB3

Recolour effect colours slightly darker than main colours

RFM5295C6525 Slate

2 x 2 tiles



Dark				Highlight		
C1	C2	C3	C4	C5	C6	C7
GB4	GB3	AC38	GB2	GB9	AC23	GB1

RFM5295C6514 Wood Weave

2 x 2 tiles



Dark						Highlight	
C1	C2	C3	C4	C5	C6	C7	C8
GB4	AC17	GB3	AC38	GB2	AC14	AC23	GB1

RFM5295C6555 Rainy Ocean

2 x 2 tiles



Design		Backgr.	Shadow	Effect
C1	C2	C3	C4	C5
GB1	GB13	GB3	GB2	AC23

Recolour effect in contrast to the background

RFM5285C6565 Trails

2 x 2 tiles



Dark Highlight

C1	C2	C3	C4	C5	C6	C7
GB12	GB4	AC43	GB3	AC14	GB2	GB1

RFM5220C6535 Wavy Shells

2 x 2 tiles



Medium Highlight Dark

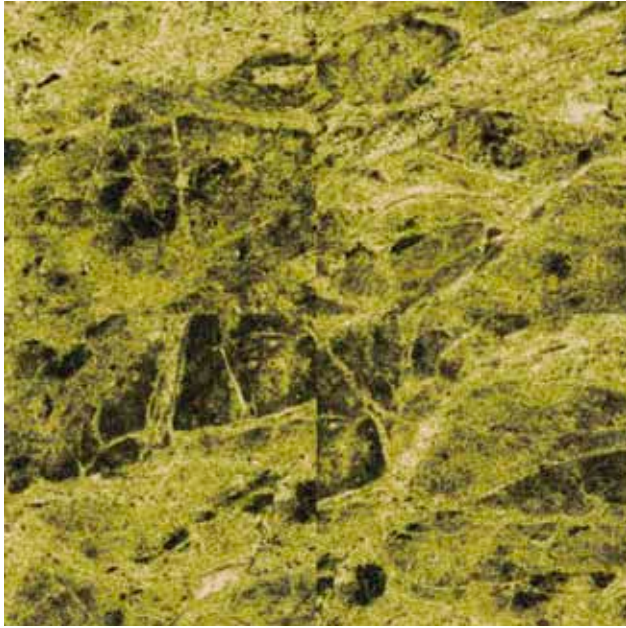
C1	C2	C3	C4	C5	C6	C7
AC53	GB1	GB2	GB3	AC44	GB8	GB9



Organic Mood

RFM5275C6545 Natural Stone

2 x 2 tiles



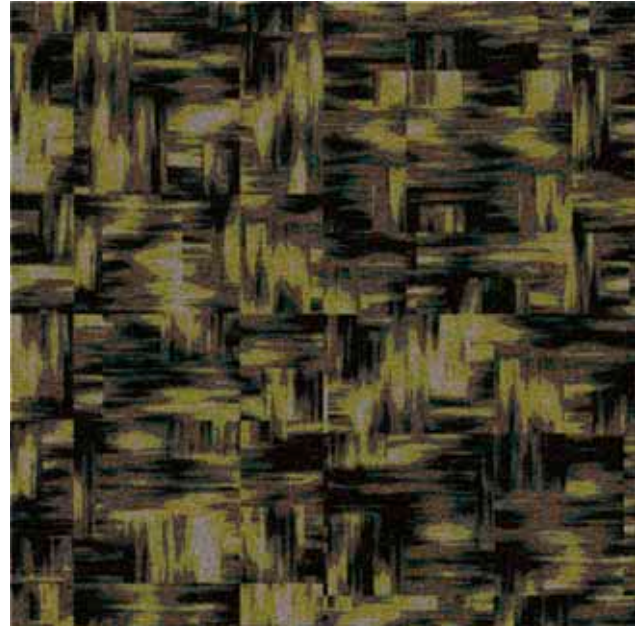
Highlight	Main colours			Dark
C1	C2	C3	C4	C5
GB1	GB1	GB8	AC20	GB5

Effect colours		
C6	C7	C8
AC22	GB3	AC31

Recolour effect colours slightly darker than main colours

RFM5295C6515 Wood Weave

2 x 2 tiles



Highlight							Dark
C1	C2	C3	C4	C5	C6	C7	C8
GB2	GB8	GB8	GB3	AC40	AC44	GB4	GB4

RFM5295C6516 Wood Weave

2 x 2 tiles



Highlight	Main colours			Dark
C1	C2	C3	C4	C5
GB1	GB8	GB7	AC44	GB4

Effect colours		
C6	C7	C8
AC43	GB7	GB4

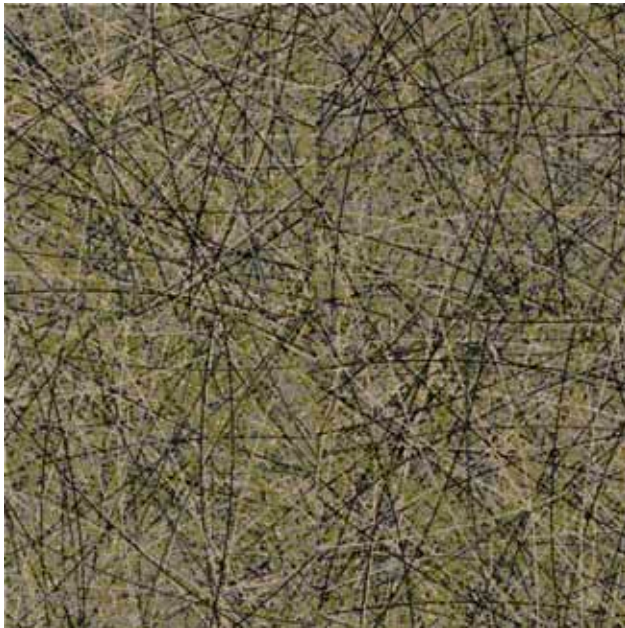
Recolour effect colours slightly darker than main colours



Highlight							Dark
C1	C2	C3	C4	C5	C6	C7	C8
GB2	AC15	GB3	GB7	GB7	AC44	GB4	GB4

RFM5295C6566 Trails

2 x 2 tiles



Dark							Highlight	
C1	C2	C3	C4	C5	C6	C7		
GB4	AC44	GB8	GB8	GB2	GB2	GB1		

RFM5295C6567 Trails

2 x 2 tiles



Dark							Highlight	
C1	C2	C3	C4	C5	C6	C7		
GB4	GB4	AC44	GB7	GB7	AC30	GB8		

RFM5275C6536 Wavy Shells

2 x 2 tiles



Highlight					Dark	
C1	C2	C3	C4	C5	C6	C7
GB1	AC22	GB8	GB8	AC20	AC31	GB5

RFM5295C6537 Wavy Shells

2 x 2 tiles



Highlight					Dark	
C1	C2	C3	C4	C5	C6	C7
GB2	GB8	GB3	AC40	AC44	GB4	GB4



↓ M0-M1-M2-1
Sortida
Way out
Salida

RFM5295C6526 Slate

2 x 2 tiles



Dark			Highlight			
C1	C2	C3	C4	C5	C6	C7
GB4	AC44	GB7	AC40	GB3	GB8	GB2

RFM5295C6556 Rainy Ocean

2 x 2 tiles



Design	Backgr.	Shadow	Effect	
C1	C2	C3	C4	C5
GB8	AC16	GB7	GB4	GB2

Recolour effect in contrast to the background

RFM5285C6557 Rainy Ocean

2 x 2 tiles

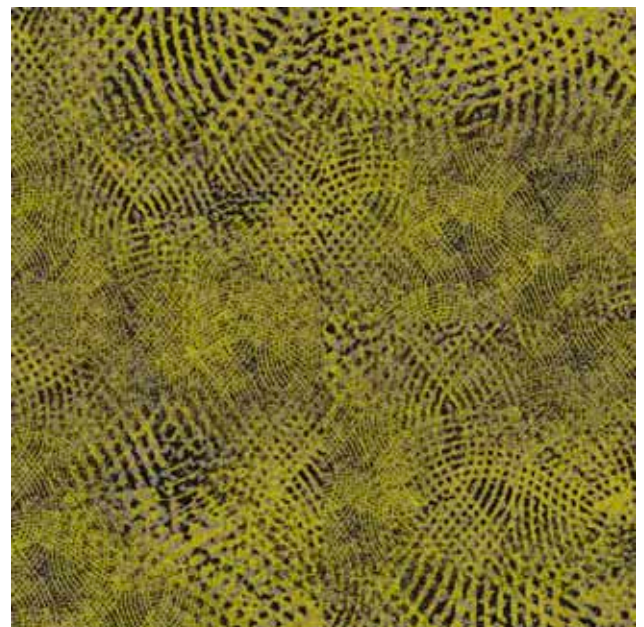


Design	Backgr.	Shadow	Effect	
C1	C2	C3	C4	C5
GB3	AC28	GB12	GB4	AC36

Recolour effect in contrast to the background

RFM5275C6558 Rainy Ocean

2 x 2 tiles



Design	Backgr.	Shadow	Effect	
C1	C2	C3	C4	C5
GB8	AC21	GB5	GB3	AC22

Recolour effect in contrast to the background

RFM5295C6527 Slate

2 x 2 tiles



Dark			Highlight			
C1	C2	C3	C4	C5	C6	C7
GB4	GB5	AC44	GB6	GB3	AC27	GB2

RFM5295C6528 Slate

2 x 2 tiles



Dark			Highlight			
C1	C2	C3	C4	C5	C6	C7
GB4	GB5	GB5	GB6	AC43	AC46	GB2

RFM5295C6538 Wavy Shells

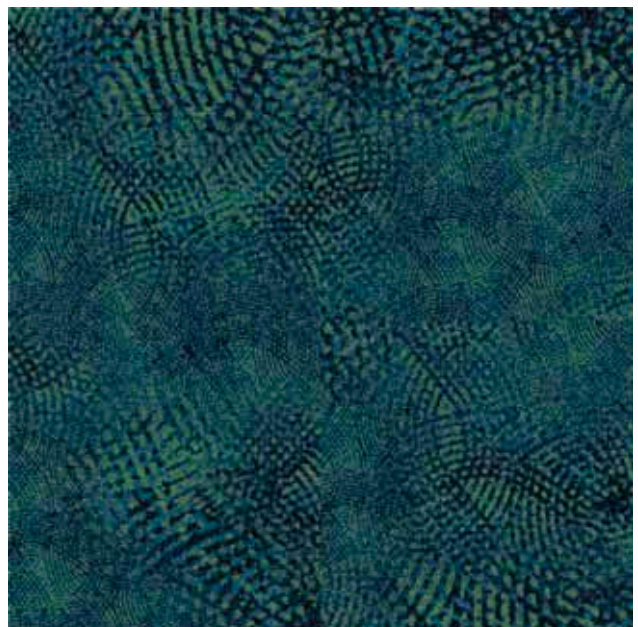
2 x 2 tiles



Dark					Highlight	
C1	C2	C3	C4	C5	C6	C7
GB4	GB5	GB6	GB3	AC46	GB2	GB1

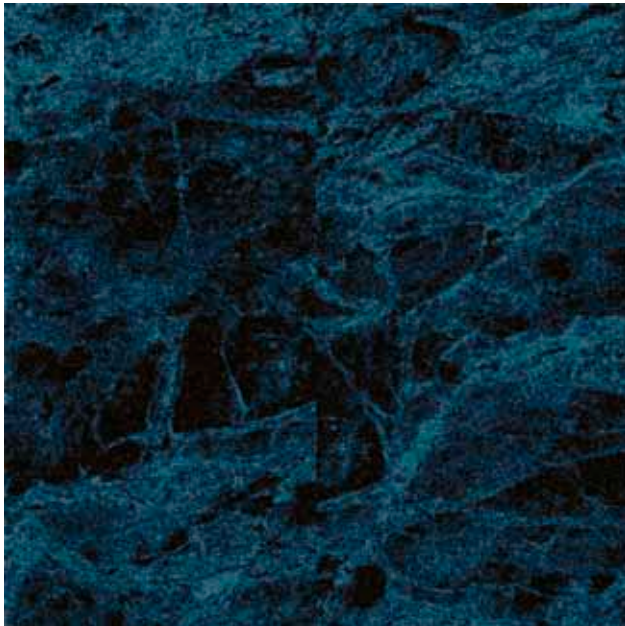
RFM5285C6559 Rainy Ocean

2 x 2 tiles



Design		Backgr.	Shadow	Effect	Recolour effect in contrast to the background
C1	C2	C3	C4	C5	
GB11	AC42	GB8	GB10	GB12	

RFM5285C6547 Natural Stone 2 x 2 tiles



Highlight	Main colours				Dark
C1	C2	C3	C4	C5	
AC38	AC38	GB11	GB12	GB12	

Effect colours		
C6	C7	C8
GB10	AC42	GB12

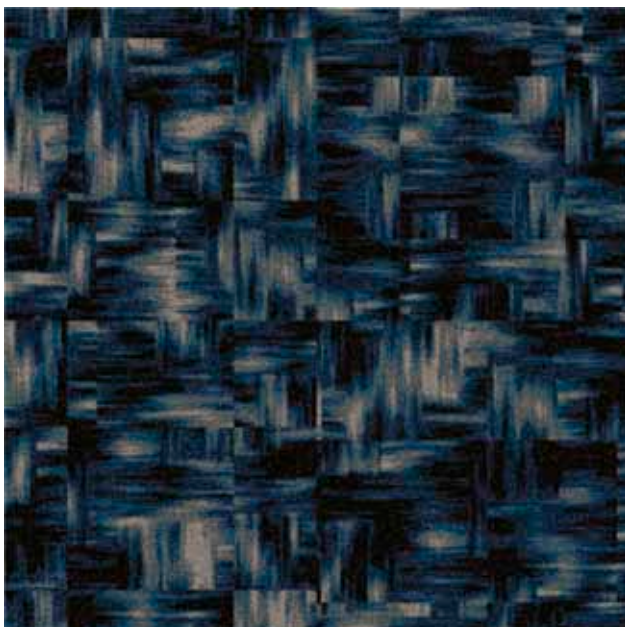
Recolour effect colours slightly darker than main colours

RFM5295C6568 Trails 2 x 2 tiles



Dark					Highlight	
C1	C2	C3	C4	C5	C6	C7
GB4	GB5	AC44	GB6	GB3	AC27	GB2

RFM5295C6517 Wood Weave 2 x 2 tiles



Highlight	C1	C2	C3	C4	C5	C6	C7	C8	Dark
	GB2	AC46	AC43	GB6	GB5	GB5	GB4	GB4	

RFM5295C6518 Wood Weave 2 x 2 tiles



Medium	Dark		Dark				Highlight
C1	C2	C3	C4	C5	C6	C7	C8
AC36	AC41	GB4	GB4	GB5	AC44	GB6	GB6

Organic Mood

RFM5285C6548 Natural Stone

2 x 2 tiles



Highlight	Main colours			Dark
C1	C2	C3	C4	C5
AC14	AC16	GB6	AC21	GB12

Effect colours		
C6	C7	C8
GB5	GB7	GB12

Recolour effect colours slightly darker than main colours

RFM5220C6519 Wood Weave

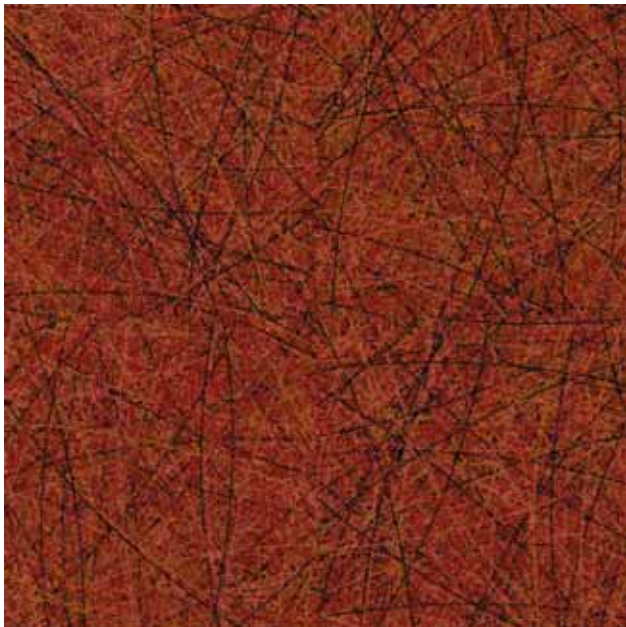
2 x 2 tiles



Highlight							Dark
C1	C2	C3	C4	C5	C6	C7	C8
GB4	GB4	GB5	GB5	AC52	AC71	GB12	GB12

RFM5285C6569 Trails

2 x 2 tiles



Dark				Highlight		
C1	C2	C3	C4	C5	C6	C7
GB12	GB7	GB6	GB6	AC17	AC16	GB5

RFM5220C6539 Wavy Shells

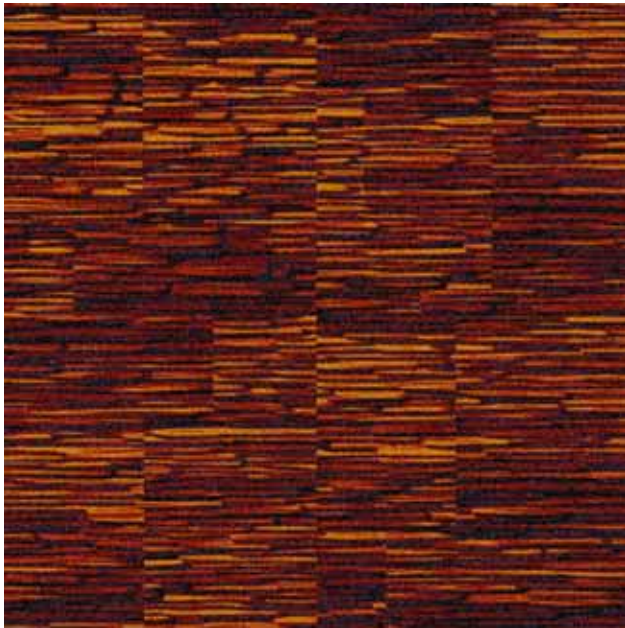
2 x 2 tiles



Dark				Highlight		
C1	C2	C3	C4	C5	C6	C7
GB12	AC71	AC52	GB5	GB4	GB4	GB3

RFM5220C6529 Slate

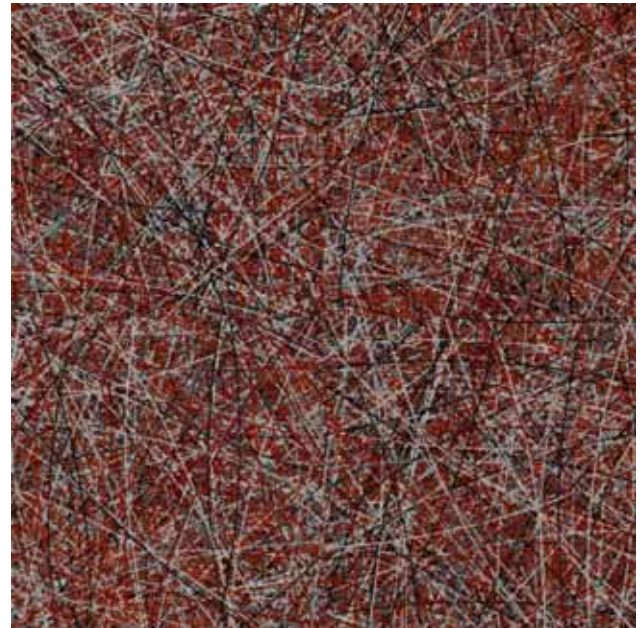
2 x 2 tiles



Dark							Highlight	
C1	C2	C3	C4	C5	C6	C7		
GB12	AC71	AC52	GB5	GB4	GB3	GB3		

RFM5220C6560 Trails

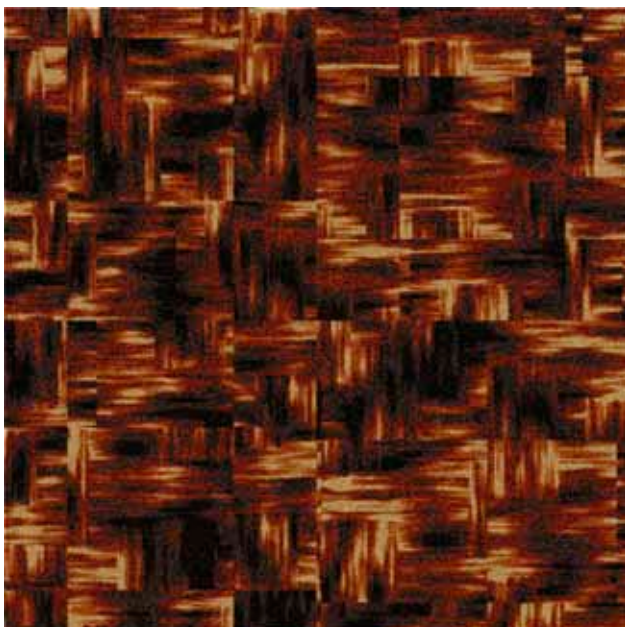
2 x 2 tiles



Dark							Highlight	
C1	C2	C3	C4	C5	C6	C7		
GB12	GB52	GB5	GB9	AC50	GB8	AC53		

RFM5295C6510 Wood Weave

2 x 2 tiles



Dark								Highlight	
C1	C2	C3	C4	C5	C6	C7	C8		
GB4	GB4	GB12	GB12	AC36	GB11	GB10	GB9		

RFM5295C6550 Rainy Ocean

2 x 2 tiles



Design		Backgr.	Shadow	Effect		
C1	C2	C3	C4	C5	Recolour effect in contrast to the background	
GB11	GB10	GB2	GB3	AC41		

DYNAMIC LINES

A stylish group of new interpretations of one of the simplest design elements. DYNAMIC LINES explores a broad range of expressions: from rigid to loose and classic to wild. From rhythmic and abrupt to kaleidoscopic; DYNAMIC LINES has it all! Ranging from simple to complex these designs create motion and drive. An intriguing selection perfect for business forerunners.



RFM5295C6334 Diffraction



RFM5295C6315 Combi Stripe



RFM5295C6354 Laser Light



RFM5220C6374 Crossover



RFM5285C6325 Prism



RFM5295C6345 Streaky Lines



RFM5285C6364 Basic Line



Dynamic Lines

RFM5295C6335 Diffraction

2 x 2 tiles



Lines					Background			
GB1	AC16	AC13	GB4	AC25	GB3	AC15	GB2	GB2

Recolour lines in contrasting colours Recolour tone on tone

RFM5220C6316 Combi Stripe

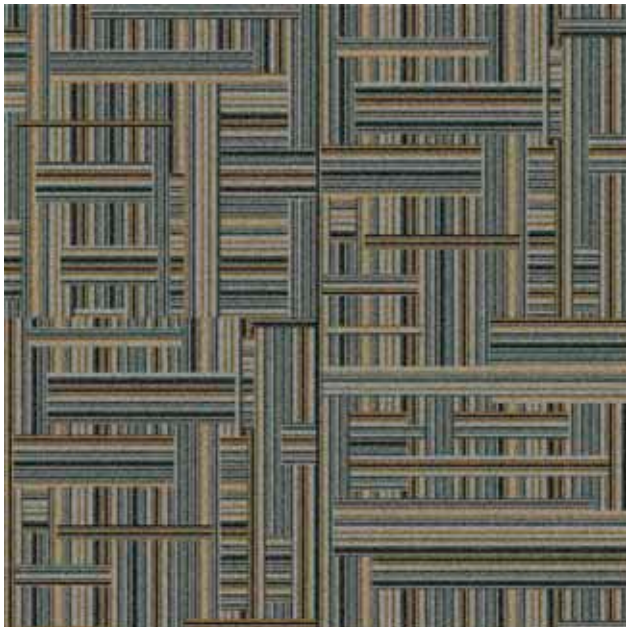
2 x 2 tiles



Main colours				Effects			
GB8	AC46	GB9	AC44	GB12	AC56	BL8-9	GB2

RFM5220C6375 Crossover

2 x 2 tiles



Main colours		Effects	
GB8	AC46	AC44	GB12

RFM5295C6365 Basic Line

2 x 2 tiles

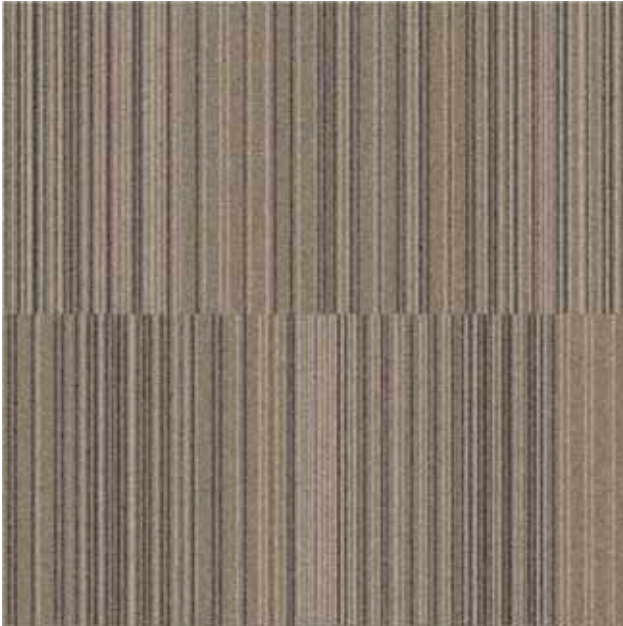


Background		Line 1		Line 2	
GB3	AC15	AC25	GB9	AC42	GB4

Recolour line 1 & 2 in light and dark

RFM5295C6366 Basic Line

2 x 2 tiles



Background		Line 1		Line 2	
C1	T1	C2	T2	C3	T3
GB2	AC25	GB3	AC16	GB1	AC13

Recolour line 1 & 2 in dark and light

RFM5295C6355 Laser Light

2 x 2 tiles



Lines				
C1	C2	C3	C4	C5
GB3	AC13	GB2	AC16	AC25

Background			
C6	C7	C8	C9
GB2	AC15	AC46	AC13

RFM5295C6326 Prism

2 x 2 tiles



Main colours			Effects			
C1	C2	C3	C4	C5	C6	C7
GB3	GB2	AC15	GB2	AC13	AC25	AC17

RFM5295C6346 Streaky Lines

2 x 2 tiles



Main colours				Effects			
C1	C2	C3	C4	C5	C6	C7	C8
GB2	GB3	GB1	AC15	GB4	AC42	GB9	AC26

Dynamic Lines

RFM5220C6322 Prism

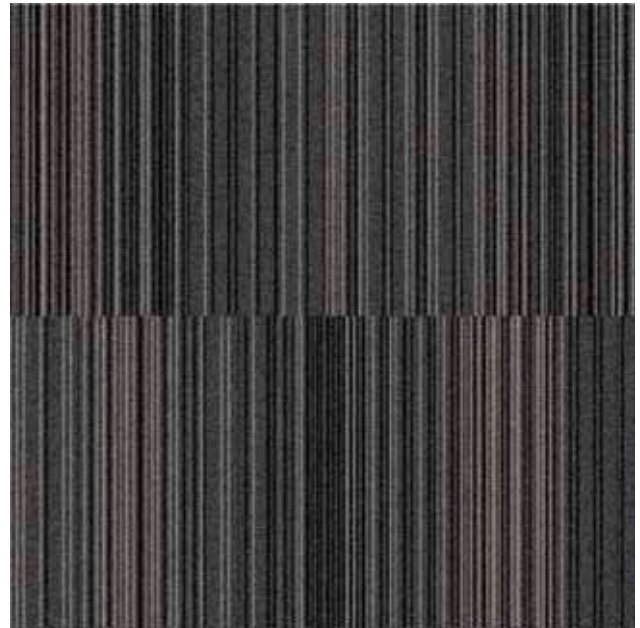
2 x 2 tiles



Main colours			Effects			
C1	C2	C3	C4	C5	C6	C7
GB12	GB9	GB9	GB8	AC46	GB8	GB12

RFM5295C6362 Basic Line

2 x 2 tiles

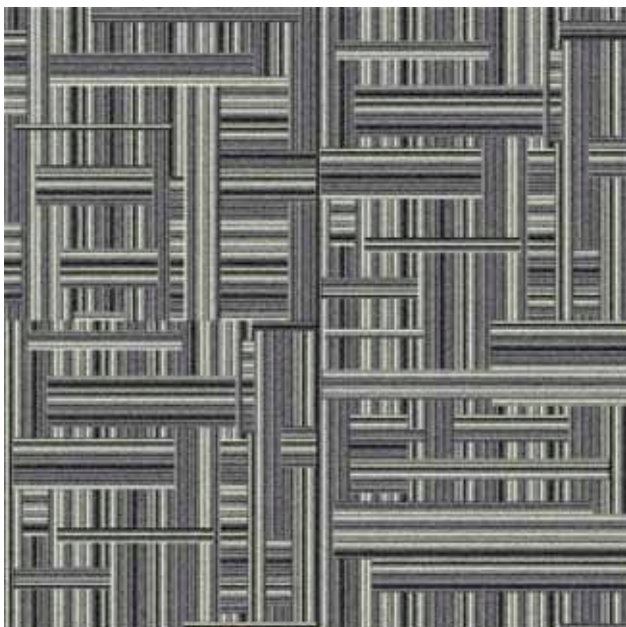


Background		Line 1		Line 2	
C1	T1	C2	T2	C3	T3
GB3	GB3	GB2	GB2	GB4	GB4

Recolour line 1 & 2 in light and dark

RFM5220C6372 Crossover

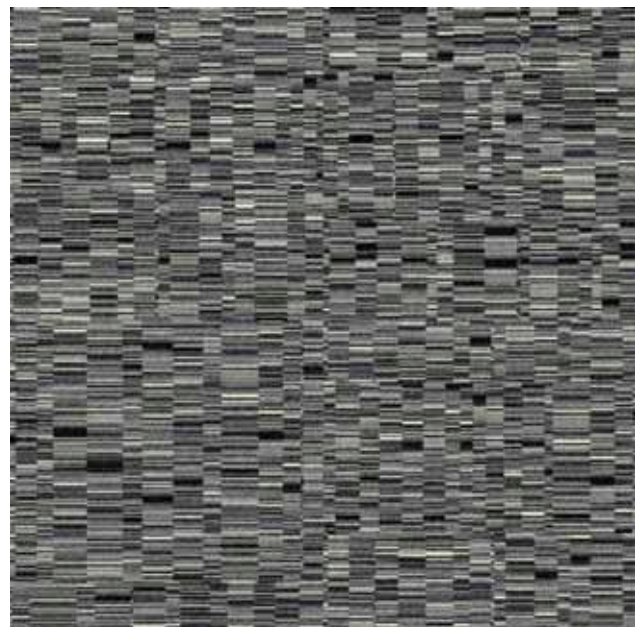
2 x 2 tiles



Main colours		Effects	
C1	C2	C3	C4
GB8	GB9	GB1	GB12

RFM5220C6342 Streaky Lines

2 x 2 tiles



Main colours				Effects			
C1	C2	C3	C4	C5	C6	C7	C8
GB8	GB12	GB9	BL8-9	GB12	GB1	GB1	GB8

RFM5295C6312 Combi Stripe

2 x 2 tiles



Main colours				Effects			
C1	C2	C3	C4	C5	C6	C7	C8
GB2	GB1	GB3	AC15	GB4	AC42	AC16	AC46

RFM5295C6352 Laser Light

2 x 2 tiles



Lines				
C1	C2	C3	C4	C5
GB4	GB3	GB4	GB3	GB3
Background				
C6	C7	C8	C9	C10
GB2	AC15	GB3	GB1	GB4

RFM5295C6332 Diffraction

2 x 2 tiles



Lines				Background			
C1	C2	C3	C4	C5	C6	C7	C8
GB2	GB3	AC13	GB1	GB4	GB3	AC43	GB4

Recolour lines in contrasting colours Recolour tone on tone

RFM5295C6343 Streaky Lines

2 x 2 tiles



Main colours				Effects			
C1	C2	C3	C4	C5	C6	C7	C8
GB2	GB3	GB1	AC15	GB4	AC42	AC16	AC46



RFM5295C6362 Basic Line (grey)
RFM5285C6360 Basic Line (blue)
RFM5285C6367 Basic Line (green)
RFM5285C6364 Basic Line (red)



Dynamic Lines

RFM5295C6334 Diffraction

2 x 2 tiles



Lines					Background			
GB10	GB11	GB4	AC38	GB3	GB11	GB12	GB3	GB3
Recolour lines in contrasting colours					Recolour tone on tone			

RFM5295C6315 Combi Stripe

2 x 2 tiles



Main colours				Effects			
GB10	GB11	GB3	GB12	AC40	AC25	GB4	AC38

RFM5295C6354 Laser Light

2 x 2 tiles



Lines				
GB11	GB4	GB10	AC38	GB3
Background				
GB3	AC38	GB11	GB4	GB4

RFM5295C6345 Streaky Lines

2 x 2 tiles



Main colours				Effects			
GB10	GB3	GB11	GB12	AC40	AC25	GB4	AC38

RFM5220C6324 Prism

2 x 2 tiles



Main colours			Effects			
C1	C2	C3	C4	C5	C6	C7
GB9	GB12	GB5	GB12	GB4	GB5	GB3

RFM5285C6325 Prism

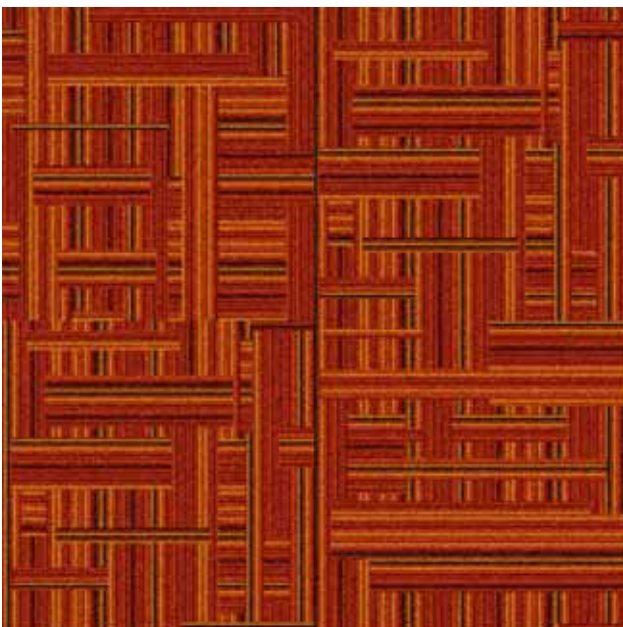
2 x 2 tiles



Main colours			Effects			
C1	C2	C3	C4	C5	C6	C7
GB7	GB6	GB12	GB6	AC21	AC17	AC16

RFM5220C6374 Crossover

2 x 2 tiles



Main colours		Effects	
C1	C2	C3	C4
GB4	GB5	GB3	GB12

RFM5285C6364 Basic Line

2 x 2 tiles



Background	Line 1	Line 2
C1	T1	C3
GB6	GB7	GB12
	C2	T3
	GB5	GB7
	AC16	

Recolour line 1 & 2 in light and dark

Dynamic Lines

RFM5295C6333 Diffraction

2 x 2 tiles



Lines					Background			
GB4	AC13	AC25	GB2	GB3	GB3	AC40	GB3	AC40

Recolour lines in contrasting colours Recolour tone on tone

RFM5295C6313 Combi Stripe

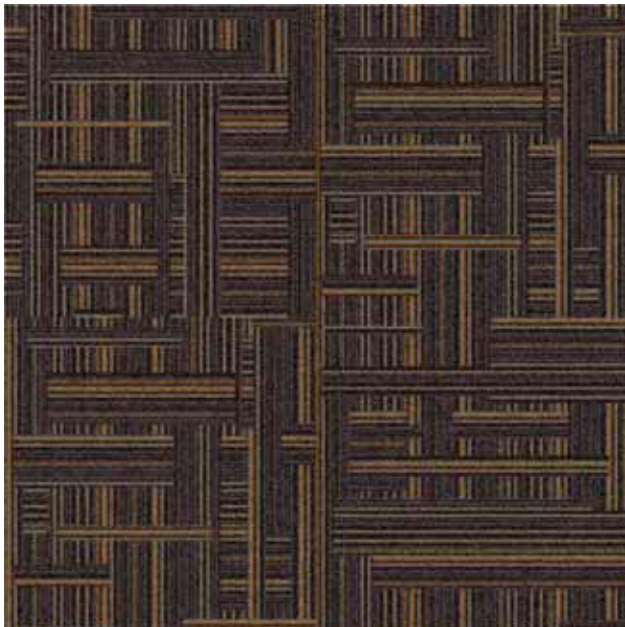
2 x 2 tiles



Main colours				Effects			
GB2	GB3	GB4	GB3	AC40	GB1	GB12	AC38

RFM5295C6373 Crossover

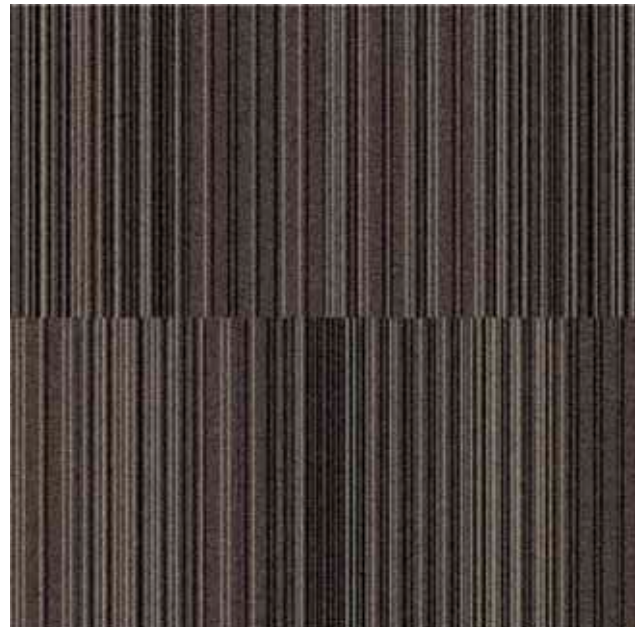
2 x 2 tiles



Main colours		Effects	
GB12	GB3	AC15	AC38

RFM5295C6363 Basic Line

2 x 2 tiles



Background	Line 1	Line 2
GB3	T1	T3
	GB2	GB4
	AC25	

Recolour line 1 & 2 in light and dark

RFM5275C6314 Combi Stripe 2 x 2 tiles



Main colours				Effects			
C1	C2	C3	C4	C5	C6	C7	C8
GB3	GB5	GB4	AC43	AC16	GB1	AC15	GB1

RFM5295C6353 Laser Light 2 x 2 tiles



Lines				
C1	C2	C3	C4	C5
GB12	GB4	AC16	AC40	GB3
Background				
C6	C7	C8	C9	C10
GB3	AC40	GB12	GB4	AC16

RFM5275C6323 Prism 2 x 2 tiles



Main colours			Effects			
C1	C2	C3	C4	C5	C6	C7
GB4	GB5	GB5	AC44	GB5	AC15	AC43

RFM5295C6344 Streaky Lines 2 x 2 tiles



Main colours				Effects			
C1	C2	C3	C4	C5	C6	C7	C8
GB2	GB4	GB3	GB3	AC40	GB1	GB12	AC38



RFM5295C6356 Laser Light

2 x 2 tiles



Lines

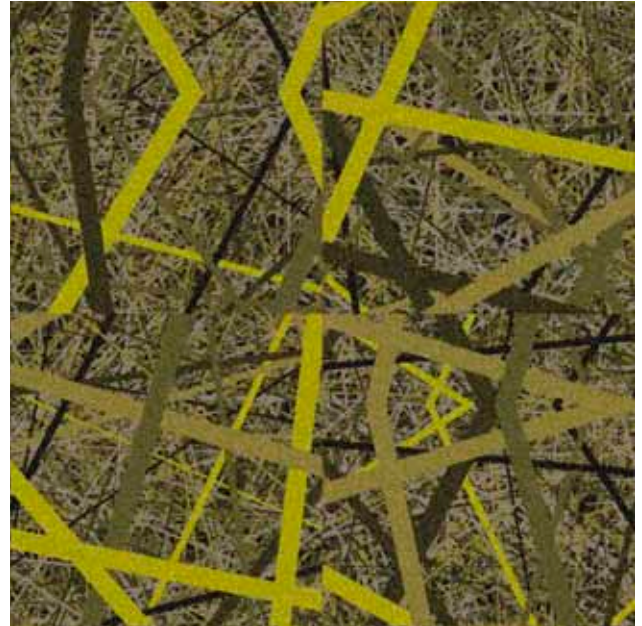
C1	C2	C3	C4	C5
GB4	AC27	GB3	GB8	AC15

Background

C6	C7	C8	C9	C10
GB7	AC27	GB3	GB4	GB4

RFM5275C6357 Laser Light

2 x 2 tiles



Lines

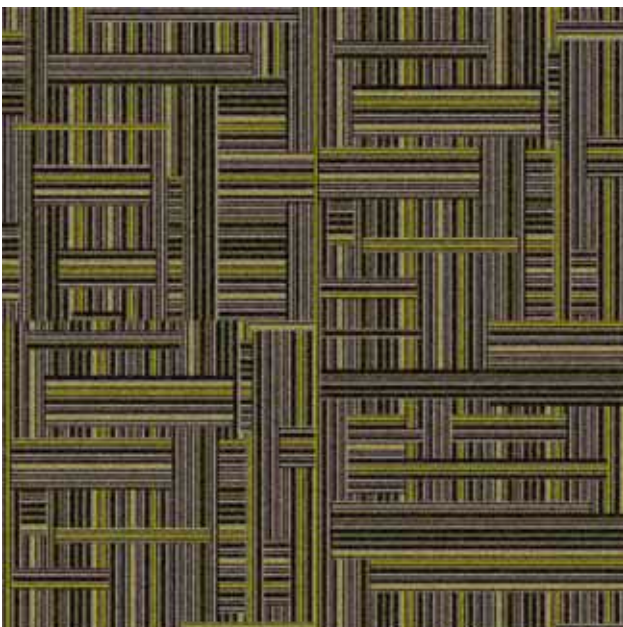
C1	C2	C3	C4	C5
GB8	AC21	AC20	AC31	GB5

Background

C6	C7	C8	C9	C10
GB3	AC31	AC20	AC21	GB5

RFM5275C6376 Crossover

2 x 2 tiles



Main colours

C1	C2
GB5	GB3

Effects

C3	C4
AC20	GB8

RFM5275C6347 Streaky Lines

2 x 2 tiles



Main colours

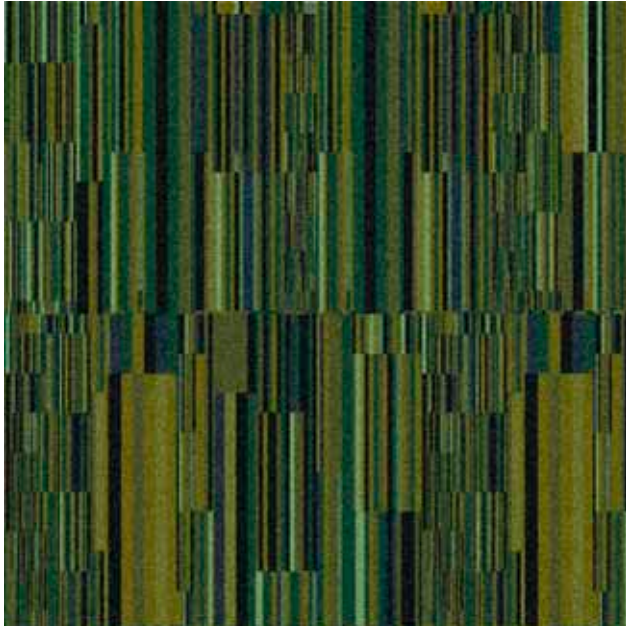
C1	C2	C3	C4
GB3	GB8	GB5	AC19

Effects

C5	C6	C7	C8
GB1	AC20	GB1	AC21

Dynamic Lines

RFM5285C6317 Combi Stripe 2 x 2 tiles



Main colours				Effects			
C1	C2	C3	C4	C5	C6	C7	C8
GB9	GB12	AC29	AC28	AC36	GB8	AC45	AC33

RFM5295C6318 Combi Stripe 2 x 2 tiles



Main colours				Effects			
C1	C2	C3	C4	C5	C6	C7	C8
GB8	GB7	GB3	AC44	AC27	AC25	GB4	AC43

RFM5285C6367 Basic Line 2 x 2 tiles



Background		Line 1		Line 2	
C1	T1	C2	T2	C3	T3
GB9	AC29	AC36	GB8	GB12	AC45

Recolour line 1 & 2 in light and dark

RFM5295C6368 Basic Line 2 x 2 tiles



Background		Line 1		Line 2	
C1	T1	C2	T2	C3	T3
GB7	AC27	GB4	AC44	GB8	AC27

Recolour line 1 & 2 in dark and light

RFM5295C6327 Prism

2 x 2 tiles



Main colours			Effects			
C1	C2	C3	C4	C5	C6	C7
GB7	GB4	GB3	GB8	AC30	AC27	AC44

RFM5285C6328 Prism

2 x 2 tiles



Main colours			Effects			
C1	C2	C3	C4	C5	C6	C7
GB9	GB12	AC29	AC45	AC36	AC30	GB8

RFM5295C6336 Diffraction

2 x 2 tiles



Lines					Background			
C1	C2	C3	C4	C5	C6	C7	C8	C9
AC44	AC30	GB7	GB3	GB2	GB8	GB2	AC16	AC28
Recolour lines in contrasting colours					Recolour tone on tone			

RFM5285C6348 Streaky Lines

2 x 2 tiles



Main colours				Effects			
C1	C2	C3	C4	C5	C6	C7	C8
GB4	AC29	GB12	GB3	AC36	GB8	AC28	AC33

Dynamic Lines

RFM5295C6337 Diffraction

2 x 2 tiles



Lines				Background			
C1	C2	C3	C4	C5	C6	C7	C8
GB4	GB5	AC43	AC45	GB6	AC43	GB6	GB4

Recolour lines in contrasting colours Recolour tone on tone

RFM5295C6319 Combi Stripe

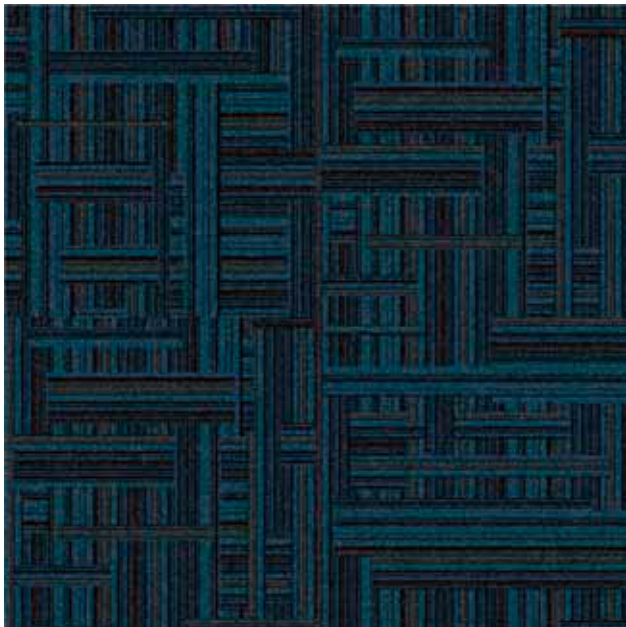
2 x 2 tiles



Main colours				Effects			
C1	C2	C3	C4	C5	C6	C7	C8
GB6	GB5	GB3	AC43	GB2	GB2	GB4	AC18

RFM5295C6377 Crossover

2 x 2 tiles



Main colours		Effects	
C1	C2	C3	C4
GB6	GB4	AC43	AC41

RFM5295C6369 Basic Line

2 x 2 tiles



Background	Line 1	Line 2
C1	C2	C3
GB5	T1	T2
AC41	GB3	AC43
		AC27
		AC26

Recolour line 1 & 2 in dark and light

RFM5285C6360 Basic Line

2 x 2 tiles



Background		Line 1		Line 2	
C1	T1	C2	T2	C3	T3
GB10	AC41	GB8	AC38	GB12	GB11

Recolour line 1 & 2 in light and dark

RFM5295C6358 Laser Light

2 x 2 tiles



Lines				
C1	C2	C3	C4	C5
GB4	AC43	AC46	GB5	GB6

Background			
C6	C7	C8	C9
GB6	GB5	GB4	AC43

RFM5285C6329 Prism

2 x 2 tiles



Main colours			Effects			
C1	C2	C3	C4	C5	C6	C7
GB11	GB12	GB10	AC42	AC39	AC40	GB8

RFM5295C6349 Streaky Lines

2 x 2 tiles



Main colours				Effects			
C1	C2	C3	C4	C5	C6	C7	C8
GB6	AC43	GB2	GB1	GB4	GB5	AC46	GB2

TYPO-GRAPHIC

Inspired by the never-ending flow of information in the modern society, TYPO-GRAPHIC offers a stylish selection of designs playing with letters and numbers. The detached sentences and layered characters tease the mind to identify words and series of numbers, and the random compositions bring depth and new meaning into play. An inspiring selection with an intellectual touch suited for modern interiors.



RFM5285C6425 Text Layers



RFM5285C6432 Lettering



RFM5295C6413 Square Numbers



RFM5295C6443 Paragraphs



RFM5295C6442 Paragraphs

2 x 2 tiles



Background Text

C1	C2	C3	C4	C5	C6
GB4	AC41	GB11	GB10	AC39	AC38

Recolour background tone-on-tone

RFM5295C6412 Square Numbers

2 x 2 tiles



Background Backgr. numbers

C1	C2	C3	C4
GB11	AC41	AC36	GB12

Numbers

C5	T5	C6	T6	C7	T7	C8	C9
GB10	AC39	AC39	GB10	GB10	AC25	AC38	AC39

RFM5220C6422 Text Layers

2 x 2 tiles

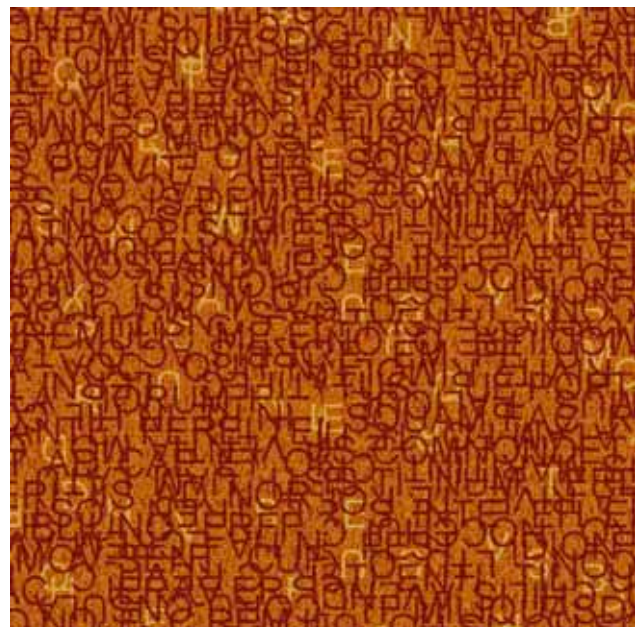


Background Design

C1	C2	C3	C4	C5
GB5	GB4	AC49	AC52	AC76

RFM5220C6452 Lettering

2 x 2 tiles



Background Background effects

C1	C2	C3	C4
GB4	GB3	GB3	GB3

Letters Contrasting letters

C5	T5	C6	T6	C7	T7
GB5	GB5	GB2	GB2	GB2	GB2

RFM5220C6423 Text Layers

4 x 2 tiles



Background

C1	C2	C3
GB5	GB4	AC48

Design

C4	C5
GB3	AC48



RFM5295C6443 Paragraphs

2 x 2 tiles



Background		Text			
C1	C2	C3	C4	C5	C6
GB5	GB4	GB6	AC43	AC27	AC26

Recolour background tone-on-tone

RFM5295C6413 Square Numbers

2 x 2 tiles

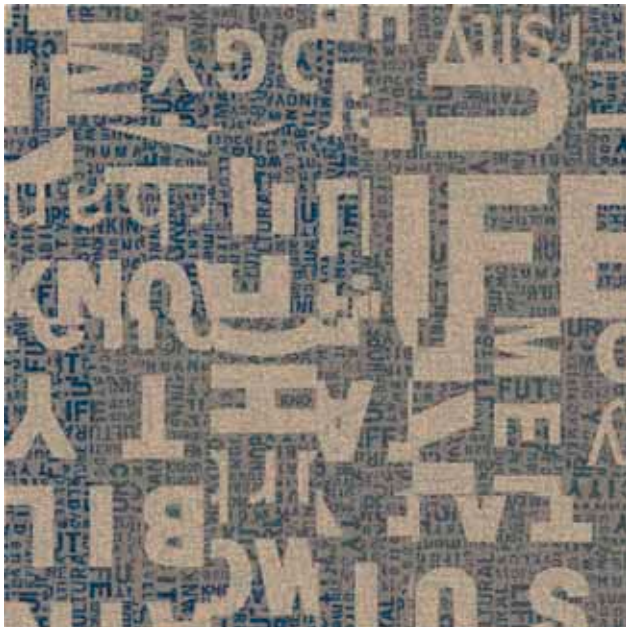


Background			Backgr. numbers
C1	C2	C3	C4
GB5	GB4	GB6	GB6

Numbers							
C5	T5	C6	T6	C7	T7	C8	C9
AC43	AC18	AC18	GB6	AC43	AC43	AC18	AC43

RFM5295C6424 Text Layers

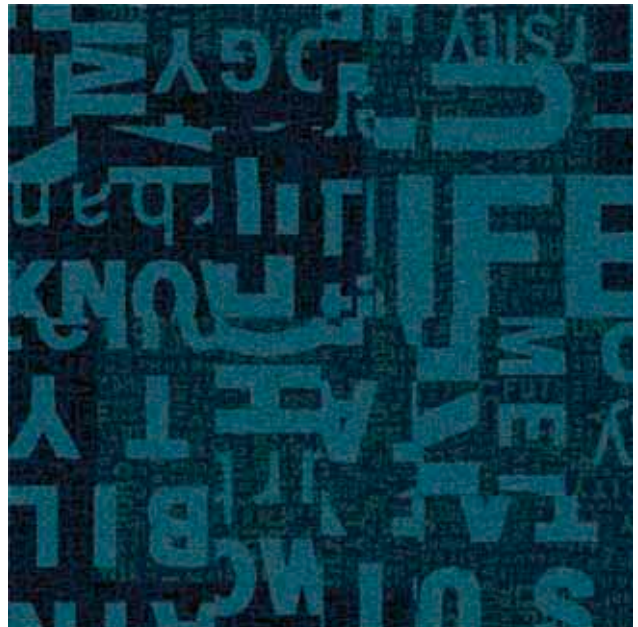
2 x 2 tiles



Background			Design	
C1	C2	C3	C4	C5
GB2	GB6	AC43	GB1	AC14

RFM5285C6425 Text Layers

2 x 2 tiles



Background			Design	
C1	C2	C3	C4	C5
GB11	GB12	AC40	AC39	GB10

RFM5295C6414 Square Numbers

4 x 2 tiles



Background

GB4	AC41	AC36	AC44

Backgr. numbers

Numbers

GB6	AC18	GB6	GB6	AC18	GB6	AC18	GB6

RFM5295C6453 Lettering

2 x 2 tiles



Background

GB6	AC43	GB6	AC43

Background effects

Letters

GB5	GB4	GB2	GB2	GB2	GB2

Contrasting letters

RFM5285C6432 Lettering

2 x 2 tiles



Background

GB11	GB12	GB10	AC39

Background effects

Letters

GB10	GB8	AC33	GB1	GB8	AC33

Contrasting letters

RFM5220C6415 Square Numbers

4 x 2 tiles



Background Backgr. numbers



Numbers



RFM5220C6426 Text Layers

2 x 2 tiles



Background



Design

RFM5220C6427 Text Layers

2 x 2 tiles



Background



Design

RFM5295C6444 Paragraphs

4 x 2 tiles



Background		Text			
GB3	AC16	GB2	AC17	GB1	AC42

Recolour background tone-on-tone

RFM5295C6454 Lettering

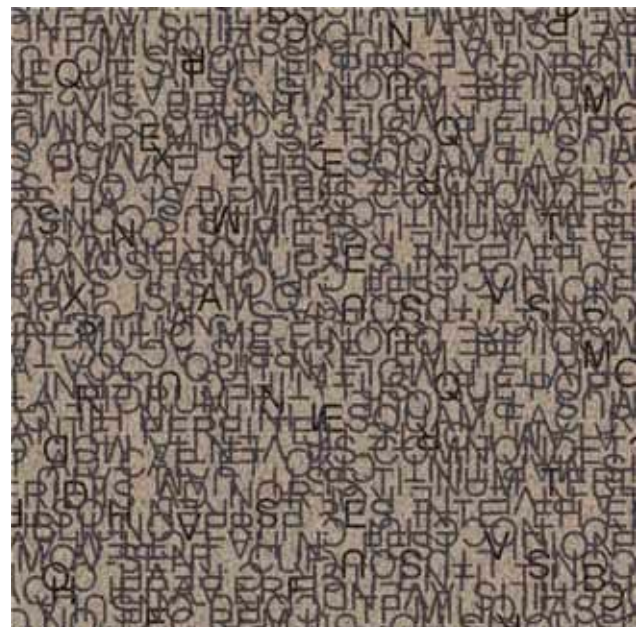
2 x 2 tiles



Background		Background effects	
GB3	GB2	AC13	AC13
Letters		Contrasting letters	
GB4	GB3	GB1	GB1

RFM5295C6455 Lettering

2 x 2 tiles



Background		Background effects	
GB2	GB1	GB1	GB1
Letters		Contrasting letters	
GB3	GB3	GB4	GB3



8
EIGHT

6
SIX

RFM5275C6445 Paragraphs

2 x 2 tiles



Background Text

GB5	GB4	GB3	AC43	AC17	AC13

Recolour background tone-on-tone

RFM5295C6416 Square Numbers

2 x 2 tiles



Background Backgr. numbers

GB3	AC40	AC16	AC16

Numbers

GB4	AC42	GB4	AC17	GB4	AC40	GB4	AC42

RFM5275C6428 Text Layers

2 x 2 tiles



Background Design

GB5	GB4	AC44	AC43	GB3

RFM5295C6433 Lettering

2 x 2 tiles



Background Background effects

GB4	GB3	AC15	AC40

Letters Contrasting letters

GB2	AC13	AC38	AC15	GB1	AC13

RFM5220C6446 Paragraphs

2 x 2 tiles



Background Text

GB8	AC44	GB9	BL8-9	GB1	GB2

Recolour background tone-on-tone

RFM5220C6417 Square Numbers

2 x 2 tiles



Background Backgr. numbers

GB8	AC44	AC56	BL8-9

Numbers

GB1	AC53	AC53	GB1	GB1	AC53	GB1	GB1

RFM5220C6418 Square Numbers

4 x 2 tiles



Background Backgr. numbers

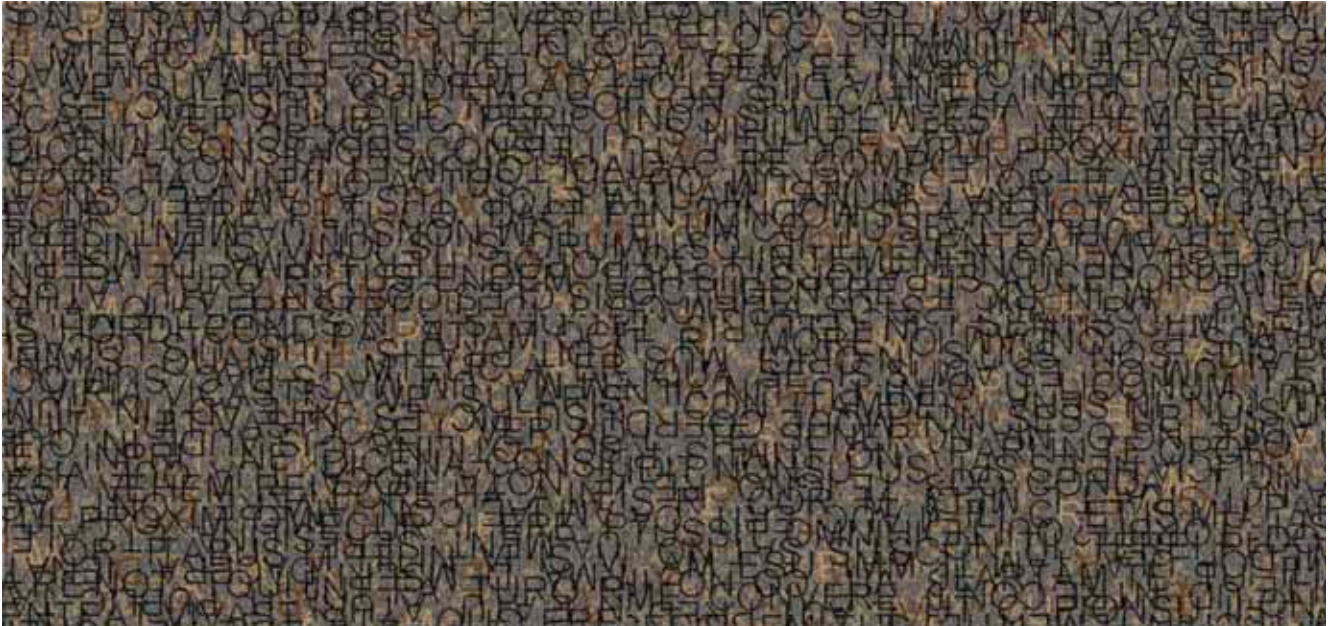
GB8	BL8-9	AC44	AC44

Numbers

GB9	AC47	AC47	GB9	GB9	BL8-9	GB12	GB9

RFM5295C6456 Lettering

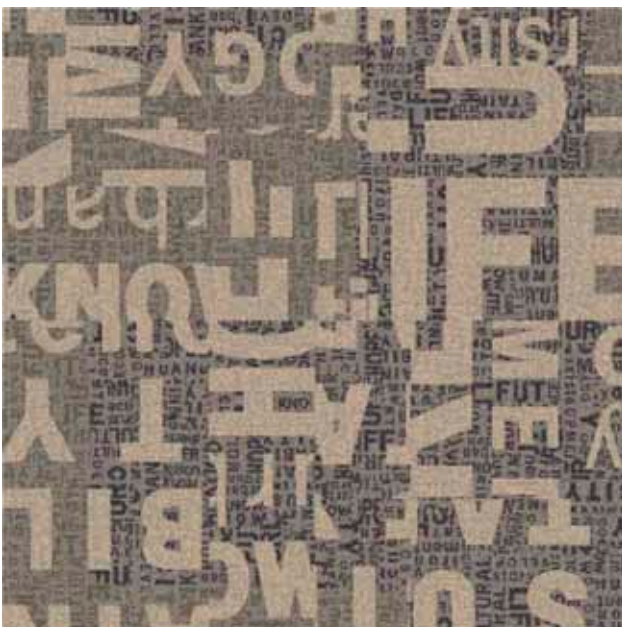
4 x 2 tiles



Background		Background effects			
C1	C2	C3	C4		
GB2	AC46	GB9	AC40		
Letters		Contrasting letters			
C5	T5	C6	T6	C7	T7
GB4	GB3	AC40	AC38	GB9	GB1

RFM5295C6429 Text Layers

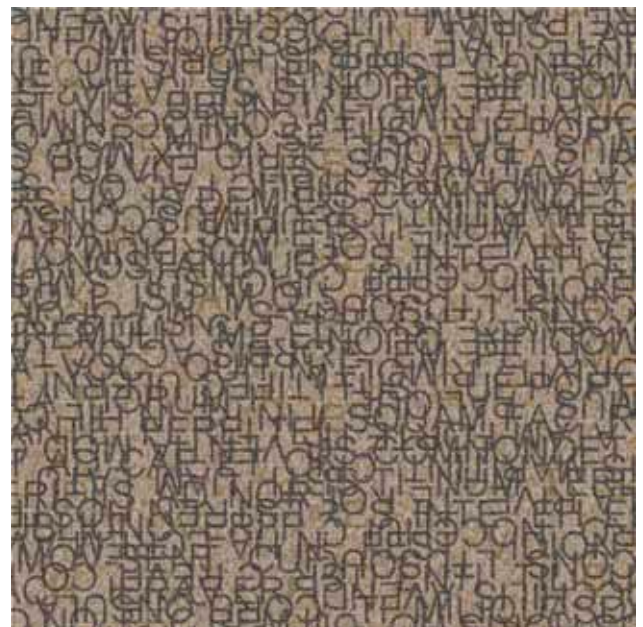
2 x 2 tiles



Background			Design	
C1	C2	C3	C4	C5
GB2	AC16	GB3	GB1	AC13

RFM5295C6457 Lettering

2 x 2 tiles



Background		Background effects	
C1	C2	C3	C4
GB2	GB1	GB1	GB9
Letters		Contrasting letters	
C5	T5	C6	T6
GB3	AC15	GB3	AC38
		C7	T7
		AC26	AC26

RFM5295C6447 Paragraphs

2 x 2 tiles



Background		Text			
GB4	AC44	GB7	GB3	AC27	GB8

Recolour background tone-on-tone

RFM5295C6448 Paragraphs

2 x 2 tiles



Background		Text			
GB2	AC28	GB7	GB1	GB3	AC44

Recolour background tone-on-tone

RFM5295C6420 Text Layers

2 x 2 tiles



Background			Design	
GB7	GB8	AC27	AC44	GB4

RFM5295C6419 Square Numbers

2 x 2 tiles



Background			Backgr. numbers
GB7	AC27	GB3	GB8

Numbers						
GB2	AC13	GB2	GB8	GB2	GB8	GB2
						GB8

RFM5295C6458 Lettering

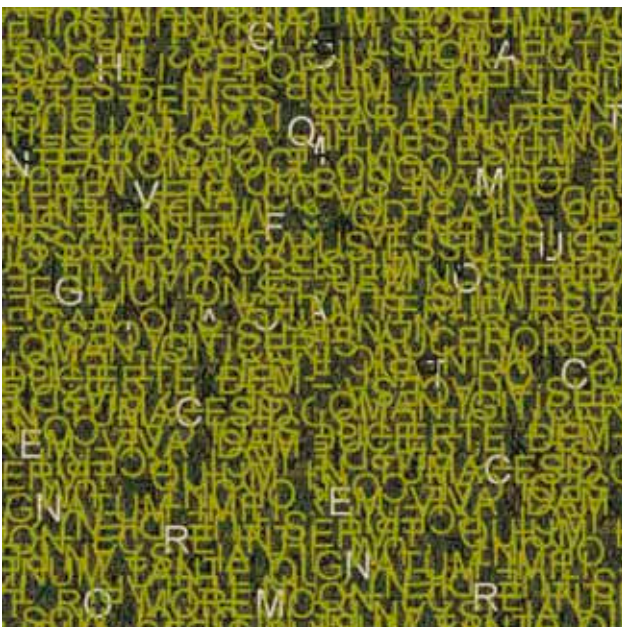
4 x 2 tiles



Background		Background effects			
C1	C2	C3	C4		
GB7	GB8	GB8	GB8		
Letters		Contrasting letters			
C5	T5	C6	T6	C7	T7
GB4	AC44	GB2	GB2	GB2	GB1

RFM5275C6434 Lettering

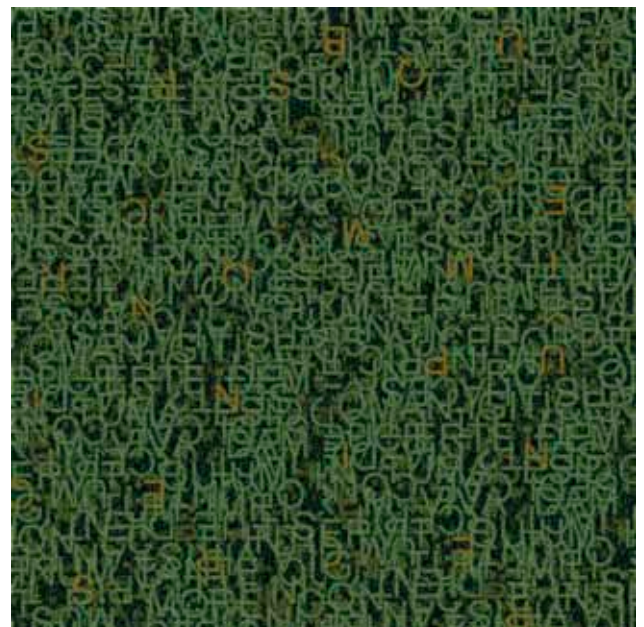
2 x 2 tiles



Background		Background effects			
C1	C2	C3	C4		
GB5	AC19	AC21	AC20		
Letters		Contrasting letters			
C5	T5	C6	T6	C7	T7
GB8	GB8	GB5	GB5	GB1	GB1

RFM5285C6435 Lettering

2 x 2 tiles



Background		Background effects			
C1	C2	C3	C4		
GB9	GB12	AC30	AC36		
Letters		Contrasting letters			
C5	T5	C6	T6	C7	T7
GB8	AC36	GB3	AC36	AC30	AC29

How to read the recolour information

Gradient or photographic effects

Some of the designs should be recoloured with colours grading from dark to light to retain the character of the design. When recolouring, please select a range of colours from dark to light as indicated with the gradient bar shown below the design in question.

In the example below, the range of colours from light to dark grey have been substituted with a range of colours from light to dark brown.

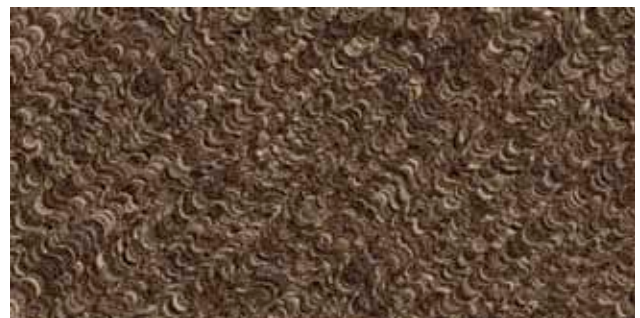
RFM5220C6533 2 x 1 tiles



Highlight Dark

C1	C2	C3	C4	C5	C6	C7
GB1	AC53	GB8	GB8	BL8-9	GB9	GB12

ES60053MIX-100 2 x 1 tiles



Highlight Dark

C1	C2	C3	C4	C5	C6	C7
AC17	GB3	AC13	AC14	GB4	AC30	GB5

Tonal effects

Some of the designs contain colours that are toned with a tiny texture in a tonal colour to obtain a vibrant, nuanced look and to spice up larger solid areas in the designs.

This texture is illustrated as follows:

Main colours are shown with a large colour box (C1, C2 etc), whereas the corresponding tonal colours are shown with a smaller colour box (T1, T2 etc).

A texture with a dark tone will appear more dotted in the finished product

A texture with a light tone will appear more even in the finished product

A texture with same tone as the main colour will look solid in the finished product



Background Numbers

C1	T1	C2	C3
GB1	GB2	GB3	GB4



Background Numbers

C1	T1	C2	C3
GB1	GB2	GB3	AC14



Background Numbers

C1	T1	C2	C3
GB1	GB2	GB3	GB3

How to recolour

Easy recolouring

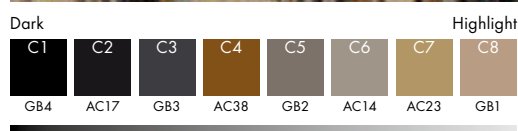
Simply contact your ege customer care contact and explain your wishes. Subsequently, one or more suggestions on print or sample will be prepared for you. We always recommend a sample of your chosen design, so you can experience the full richness of the different textures in the collection before actual order.

Example:

You like design Wood Weave RFM5295C6514, but prefer to see it in a green version, with GB6 and GB7 from palette 5220 as dominant colours.

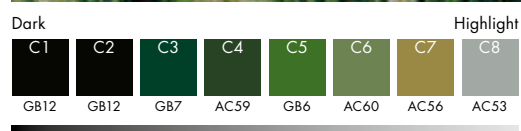
RFM5295C6514

2 x 1 tiles



ES60051MIX-21

2 x 1 tiles



Carré Modular

Create unique flooring solutions by selecting designs and colours from the collection or fit the designs to your specific needs by recolouring with the standard colour palettes or special colours.

- 17 specially selected designs in a variety of standard colours
- Recolourable in contrasting colours
- Patented ege modular backing – 100% textile free from potentially harmful substances
- Undisputed performance standard – EN 1307
- Performance classification to fit any need; heavy and extra heavy use
- Minimum order requirement of 40 m² per design/per colour palette
- Minimum order requirement of 200 m² for special colours
- Standard size – 48 x 48 cm – from 40 m². Special size – 96 x 96 cm – from 200 m²
- 48 hours sample service – 40 x 40 cm
- MOD 750 modular backing and MOD 350 modular backing from 200 m²

Organised in three evocative design stories Carré Modular fits into a broad range of different environments.

Carré Modular explores tangible elements and structures found in these environments. While randomly zooming in and out Carré Modular breaks up well-known constructions to unite them in new ways, adding depth and structure to the designs by playing with contrasts in size, shape and colour.

Colour palettes

Colour palette 5220

GB1	A20041	GB2	A20042	GB3	A20043	GB4	K20044	GB5	K20045	GB6	K20046
GB7	K20047	GB8	K20048	GB9	K20049	GB10	K20050	GB11	K20051	GB12	K20012

Accent Colours - for use in areas of max. 10x10 cm

AC43	AC44	AC45	AC46	AC47	AC48	AC49	AC50	AC51	AC52	AC53	AC54	AC55	AC56	AC57	AC58	AC59	AC60
AC61	AC62	AC63	AC64	AC65	AC66	AC67	AC68	AC69	AC70	AC71	AC72	AC73	AC74	AC75	AC76	AC77	

Colour palette 5275

GB1	K28328	GB2	K28329	GB3	K28378	GB4	K28374	GB5	K28366	GB6	K28364
GB7	K28380	GB8	K28379	GB9	K27886	GB10	K28360	GB11	K28367	GB12	K28368

Accent Colours - for use in areas of max. 10x10 cm

AC13	AC14	AC15	AC16	AC17	AC18	AC19	AC20	AC21	AC22	AC23	AC24	AC25	AC26	AC27	AC28	AC29	AC30
AC31	AC32	AC33	AC34	AC35	AC36	AC37	AC38	AC39	AC40	AC41	AC42	AC43	AC44	AC45	AC46	AC47	

Colour palette 5285

GB1	K28521	GB2	K28522	GB3	K28523	GB4	K28524	GB5	K28525	GB6	K28526
GB7	K28527	GB8	K28528	GB9	K28529	GB10	K28530	GB11	K28531	GB12	K20012

Accent Colours - for use in areas of max. 10x10 cm

AC13	AC14	AC15	AC16	AC17	AC18	AC19	AC20	AC21	AC22	AC23	AC24	AC25	AC26	AC27	AC28	AC29	AC30
AC31	AC32	AC33	AC34	AC35	AC36	AC37	AC38	AC39	AC40	AC41	AC42	AC43	AC44	AC45	AC46	AC47	

Colour palette 5295

GB1	K28601	GB2	K28602	GB3	K28603	GB4	K20012	GB5	K28605	GB6	K28606
GB7	K28607	GB8	K28608	GB9	K28609	GB10	K28610	GB11	K28611	GB12	K28632

Accent Colours - for use in areas of max. 10x10 cm

AC13	AC14	AC15	AC16	AC17	AC18	AC19	AC20	AC21	AC22	AC23	AC24	AC25	AC26	AC27	AC28	AC29	AC30
AC31	AC32	AC33	AC34	AC35	AC36	AC37	AC38	AC39	AC40	AC41	AC42	AC43	AC44	AC45	AC46	AC47	

Identification Characteristics	Standard	Product Data	
Structure - Struktur - Struktur - Structure	ISO 2424	Tufted loop pile	
Gauge - Gauge - Teilung - Jauge	ISO 2424	1/10	
Pilematerial - Luvmateriale - Faser - Couche d'usage	DIR 96/73, 96/74	100% polyamide Econyl 70	
Coloration - Farvemetsode - Farbgestaltung - Teinture	-	Millitron	
Backing - Bagside - Rücken - Dossier	eTL	MOD 750	MOD 350*
Dimensions - Dimensioner - Dimensionen - Dimensions	ISO 3018	48x48 cm/96x96 cm	
Total thickness - Totalhøjde - Gesamthöhe - Epaisseur totale	ISO 1765	Ca. 9 mm	Ca. 7 mm
Surface pile thickness - Luvhøjde - Polhöhe - Epaisseur du velours	ISO 1766	Ca. 3 mm	
Tufts - Noppeantal - Noppenzahl - Nombre de boucles	ISO 1763	Ca. 180.000 pr. m ²	
Total carpet weight - Totalvægt - Gesamtgewicht - Masse totale	ISO 8543	Ca. 3,100 g/m ²	Ca. 2,200 g/m ²
Pile yarn weight - Luvvægt - Poleinsatzgewicht - Poids de velours	eTL	440 g/m ²	
Surface pile density - Luvdensitet - Poldichte - Masse volumique du velours de surface	ISO 8543	0.100 g/cm ³	
Antisoiling protection - Antismudsbehandlet - Antischmutzausrüstung - Antifalisure	eTL	Yes	
Performance Characteristics			
Performance areas - Brugsområder - Anwendungsbereiche - Domaines d'usage	EN 1307	33 Commercial - Heavy	
Suitable for castor chairs - Rullehjulsegnet - Stuhllösleneignung - Apte à sièges à roulettes	EN 985	Constant use	
Suitable for stairs - Trappeegnet - Treppeneignung - Aptitude escaliers	EN 1963	Yes	
Static control - Antistatiske egenskaber - Antistatausrüstung - Propriétés antistatiques	eTL	Permanently antistatic - Permanent antistatisk - Permanent antistatisch - Antistatique permanent	
Vertical Electrical Resistance - Gennemgangsmstand - Durchgangswiderstand - Résistance verticale	ISO/DIS 10965	<1x10 ⁹ ohm	>1x10 ⁹ ohm
Acou.insu. from impact noise - Trinlydsdæmpning - Trittschallschutz - Acou.insu. from impact noise	EN ISO 717-2	30 dB	25 dB
Acoustical absorption - Akustisk absorption - Schallabsorption - Absorption acoustique	ISO 354	0.30 αW	0.25 αW
Suitable for heated floors - Gulvvarmeegnet - Apte au sol chauffant - Fussbodenheizungsgesegnet	ISO 8302	Yes	
Colour fastness to light - Lysægted - Lichtechtheit - Solidité de teinture lumière	ISO 105-B02	>5	
Colour fastness to rubbing wet/dry - Gnidægted våd/tør - Reibechtheit nass/trocken - Solidité au frottement sec/humide	EN ISO 105-X12	>3/>3-4	
Colourfastness to water patterned - Vandægted mønstrede - Wasserechtheit gemustert - Solidité au Moquette à dessin	EN ISO 105-E01	>4	
Safety Characteristics			
CE Labelling	Slip resistance EN 13893 EN 14041	Class DS Certified	
EC Certificate	EN 14041	0845-CPD-CX10017C	
Fire Classifications - Brandklassifikationer - Brandverhalten - Classements feu	DK:MK godkendt D. DIBT Abz.no. EN 13501-1 euro class	C _f -S1 Z156.601-441 C _f -S1	C _f -S1 - C _f -S1
Indoor, hygiene - Indeklima, hygiejne - Innenraumklima, Hygiene - Air, hygiène	DIM LEED BASTA	No. 006 Green Label Plus Registered	No. 006 Green Label Plus Registered
Guides			
Installation & adhesive guide - Montering inkl. limguide - Verlegen & Verklebungsguide - Pose guide de colle compris	DK, N, S, GB, D, F	Dansk, Norsk, Svensk, English, Deutsch, Français	
Cleaning, stain removal - Rengøring, pletfjerning - Reinigung, Fleckenentfernung - Nettoyage, détachage	DK, N, S, GB, D, F	Dansk, Norsk, Svensk, English, Deutsch, Français	
Manufacturer Characteristics			
Factory certification - Fabriks certificeringer - Werkszertificat - Certification de l'usine	ISO 9001, ISO 14001, EMAS, OHSAS	Audited and verified by Bureau Veritas	
Carpet Recycling UK	www.carpetrecycling.uk.com	Member	



we create more than carpets

SUBSIDIARIES:

Denmark
France
Germany
Norway
Sweden
United Kingdom
United Arab Emirates

AGENTS/DISTRIBUTORS:

Australia	Iran	Pakistan
Austria	Ireland	Poland
Bahrain	Italy	Portugal
Belgium	Japan	P.R. China - Shanghai
Bosnia - Herzegovina	Jordan	Qatar
Bulgaria	Kenya	Romania
Canada	Kuwait	Russia
Croatia	Latvia	Saudi Arabia
Cyprus	Lebanon	Serbia
Czech Republic	Lithuania	Singapore
Estonia	Luxembourg	Slovakia
Finland	Macau	Slovenia
Greece	Malta	South Africa
Hungary	Montenegro	Spain
Hong Kong	Netherlands	Switzerland
Iceland	New Zealand	Turkey
India	Oman	Ukraine

For further contact information please visit
www.egecarpet.com