

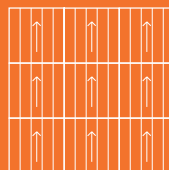


Diversity / Diversity Groove

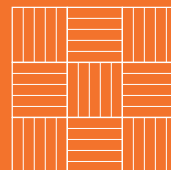
Diversity : 10 Colourways | Diversity Groove : 5 Colourways



RANDOM LAY DESIGN



BROADLOOM DESIGN



TESSELLATED DESIGN



BREEAM® 'A+' Rated



AVAILABLE
FROM STOCK

Diversity / Diversity Groove

Diversity : 10 Colourways | Diversity Groove : 5 Colourways



Suitable for use with computers

Heavy Contract Class 33
100% Solution Dyed Nylon

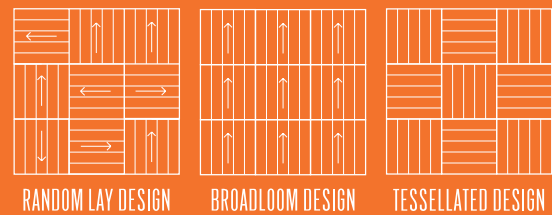
Diversity
15 Colourways
Diversity Groove
5 Colourways

10 year
Warranty

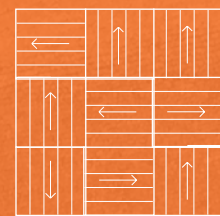
500 gsm
Pile Yarn Weight

100% Envirobase
- minimum of 75%
recycled material

Diversity



BREEAM 'A+' Rated
MADE IN BRITAIN
AVAILABLE FROM STOCK



Random Lay Design

Diversity Groove is a random lay product

London Stone & Foundry Grey

Style	Tufted 1/10" Loop Pile Tile
Fibre	Construction 100% Solution Dyed Nylon
Pile Yarn Weight	500 gsm
Pile Height	3mm
Total Weight	4280 gsm
Total Thickness	5.5mm (Tile)
Backing	100% Envirobase - minimum of 75% recycled material
Additional Backing	100% Komfort Bac available on request
Tile Size	50cm x 50cm
Wear Classification	Heavy Contract Class 33
Luxury Class LC1	
Anti-static	<2Kv body voltage. Suitable for use with computers
Static Load to BS 4939	Not less than 80% recovery after 24 hours
Colour fastness to BS1006	To Light (BS EN ISO105-B02) Better than 6 To Shampoo BS 1006 - UK - TB Change in shade 4 - 5 To Rubbing (BS EN ISO105-X12) Wet 4 - 5, Dry 4 - 5
Flammability	Floorcoverings tested to BS4790 Low Radius of Char (Hot Metal Nut Test) Euroclass Flammability Bfl-s1 (BS EN 13501)
Castor Chair Test	Suitable for use with castor chairs
Warranty	10 Years
VOC Content	E1 in relation to EN 14041:2004
Environmental Status Breeam® 'A+' Rated	

Diversity Groove is a random lay product



Farfield Park
Manvers
Wath-upon-Dearne
Rotherham, S63 5DB

T. +44 (0) 1709 763 839
F. +44 (0) 1709 763 813
E. sales@paragon-carpets.co.uk
W. www.paragon-carpets.co.uk



BREEAM® 'A+' Rated



Diversity Groove

Armada



Grasshopper



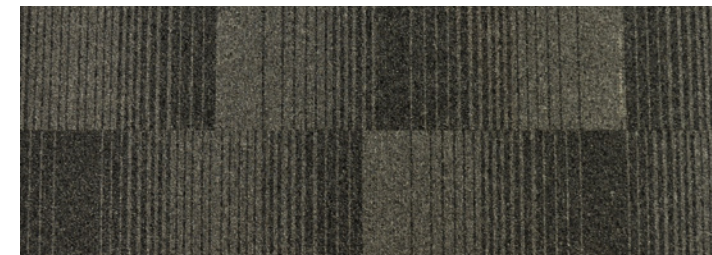
Diversity



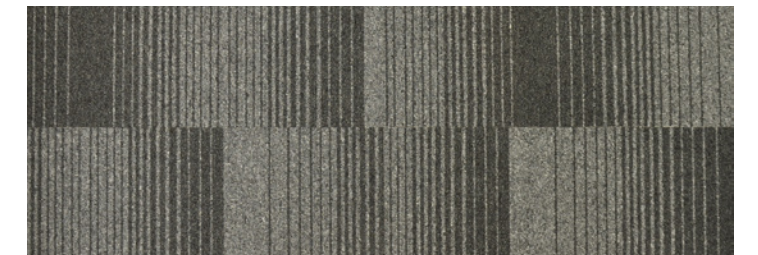
Asha



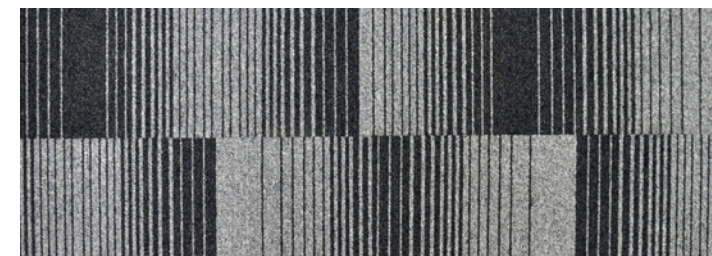
616812 Gusto
(LRV - Y3.57)



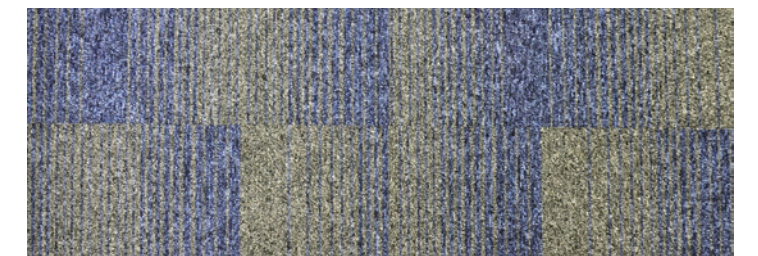
810820 Vibe
(LRV - Y8.04)



812810 Asha
(LRV - Y4.39)



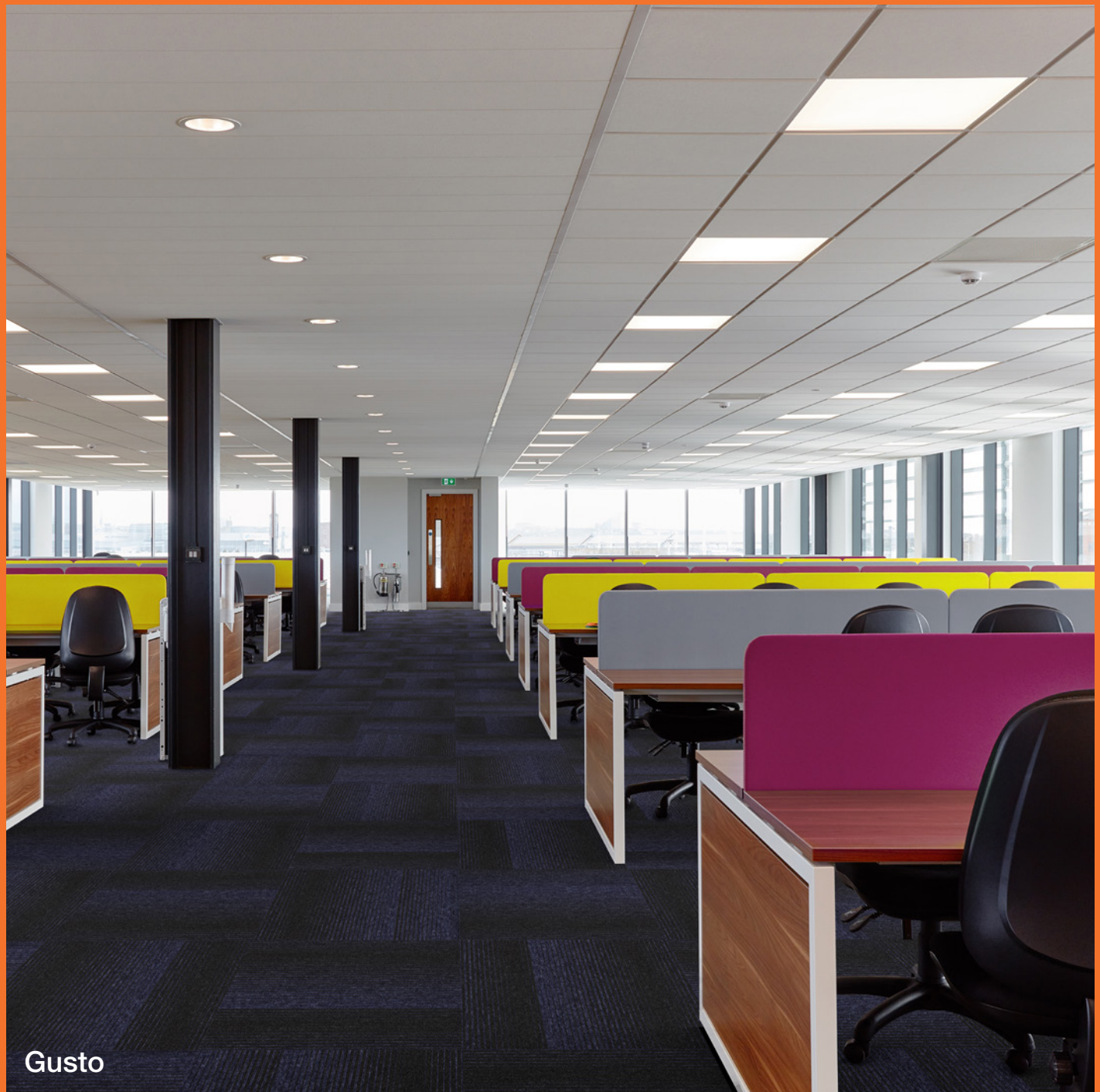
812820 Armada
(LRV - Y5.31)



616810 Jaxx
(LRV - Y5.74)



Razzmic Berry



Gusto



Diversity Groove

Armada

INSTALLATION

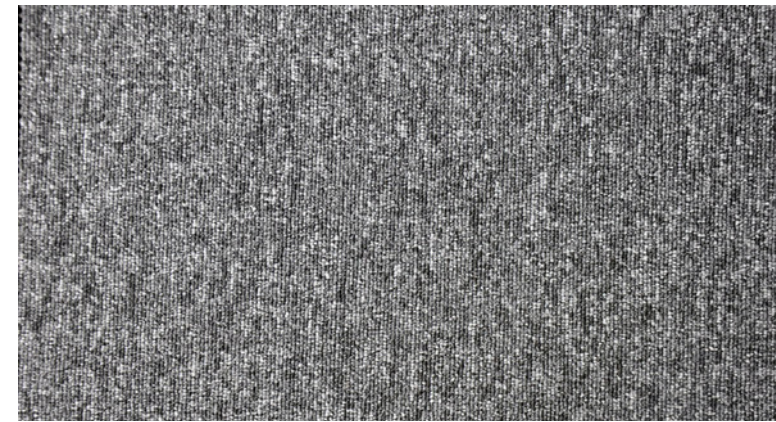
Sub floors should be clean, dry and flat and prepared in accordance with BS5325. Timber floors should be covered with plywood or other appropriate sheet materials. For tiles use F Ball tackifier F41 or Laybond 79. Tiles may be laid tessellated or broadloom. Tiles should be allowed to condition for a minimum of 24 hours at the expected temperature and humidity prevailing when the building is in use. Further installation information is available from the Paragon Sales Office.

COLOUR

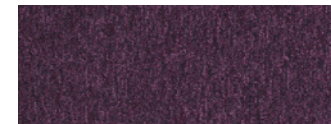
For technical reasons, as with all textile materials, it may not be possible to colour match from different batches. Orders requiring colour match should be placed at the same time. Production may therefore show variations to the sample card.

MAINTENANCE

It is recommended that a maintenance schedule be initiated from the date of installation to achieve maximum life expectancy of the product. Regular vacuum cleaning with a twin motored upright vacuum cleaner is essential. All spillages and stains should be attended to immediately. For detailed information, please consult the Paragon cleaning and maintenance guide. It is imperative that all internal carpets are well protected from outside soiling and moisture by the use of barrier matting such as MatWorks, also available from Paragon.



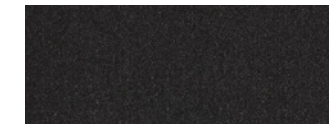
Lupus Grey 811
(LRV - Y27.56)



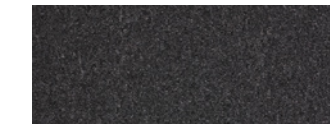
Purple Rain, 750
(LRV - Y4.26)



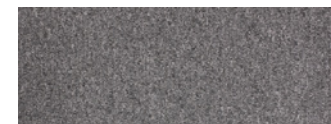
Razzmic Berry, 740
(LRV - Y6.07)



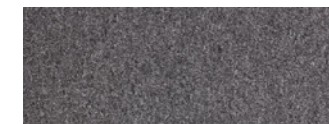
Panther, 812
(LRV - Y2.94)



Foundry Grey, 810
(LRV - Y6.63)



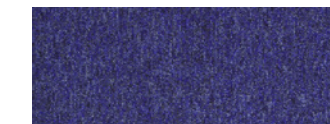
Mouse, 830
(LRV - Y16.28)



London Stone, 820
(LRV - Y10.04)



Liberty, 612
(LRV - Y3.13)



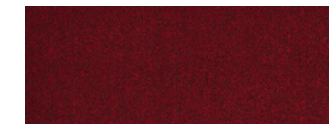
Electric, 625
(LRV - Y5.12)



Denim, 616
(LRV - Y4.95)



Skylight, 640
(LRV - Y7.65)



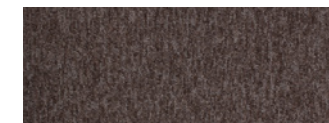
Blazer, 210
(LRV - Y4.52)



Racing Green, 505
(LRV - Y4.89)



Grasshopper, 550
(LRV - Y14.41)



Bark, 108
(LRV - Y9.82)



Farfield Park
Manvers
Wath-upon-Dearne
Rotherham, S63 5DB
T. +44 (0) 1709 763 839
F. +44 (0) 1709 763 813
E. sales@paragon-carpets.co.uk
W. www.paragon-carpets.co.uk

	545333 12	EMS 596740	
EN 14041:2004 Product Type Bitumen backed tufted carpet tile Reaction to fire Class Bfl-s1 Slipperiness NPd			

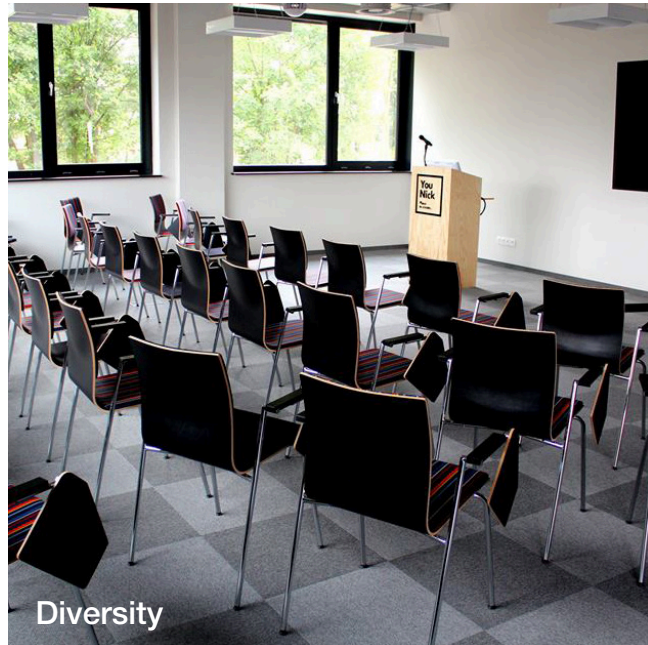




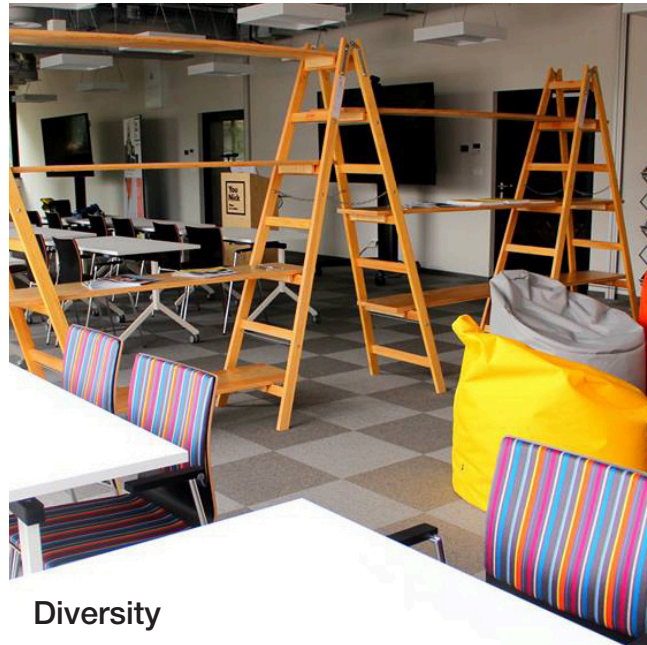
Gusto



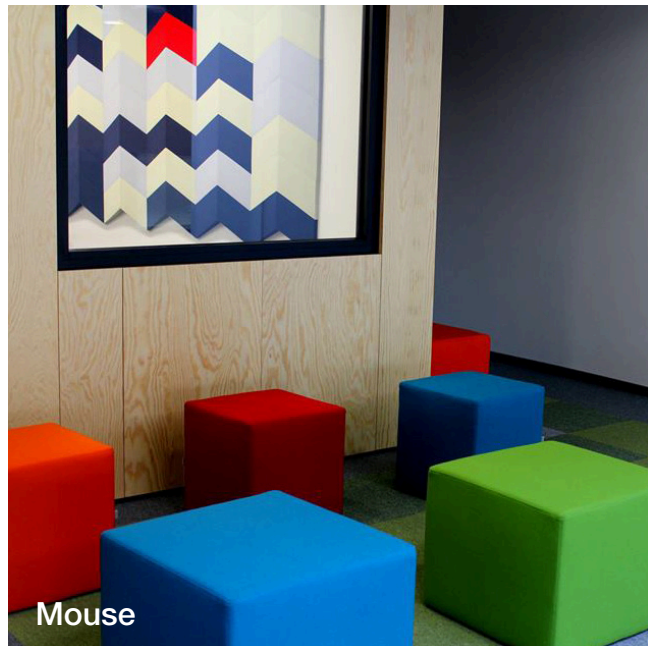
Racing Green & Grasshopper



Diversity



Diversity



Mouse



Diversity

Razzmic Berry



Armada



Jaxx



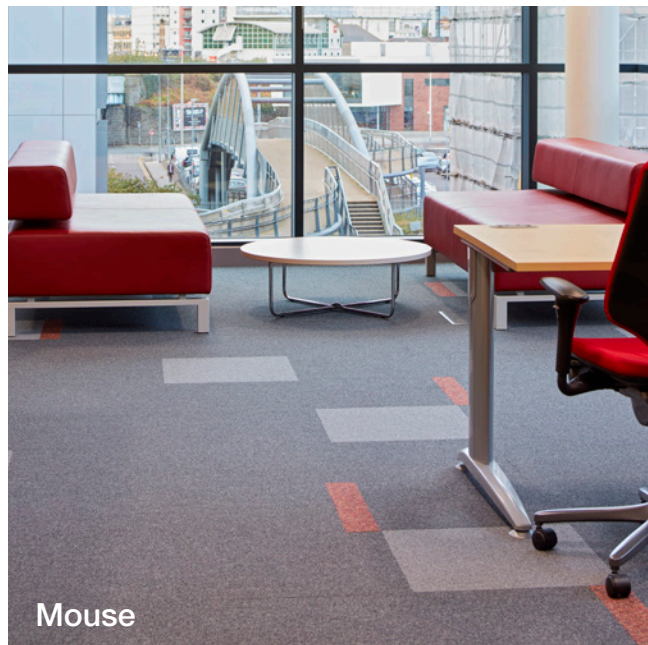
Razzmic Berry



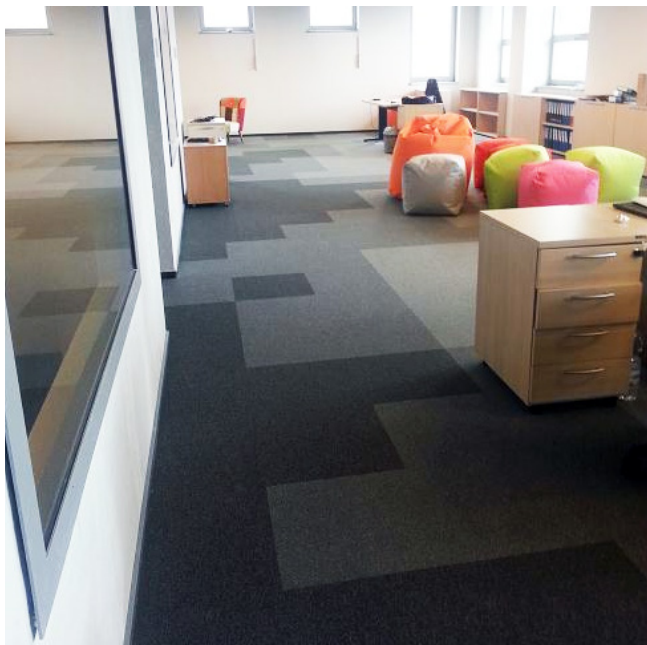
Purple Rain



London Stone & Foundry Grey



Mouse



Purple Rain, Panther, Liberty and Mouse

Experience Carpet Tiles

paragon
CARPET TILES



Diversity / Diversity Groove

Diversity : 10 Colourways | Diversity Groove : 5 Colourways

A Division of National Floorcoverings Ltd.

Farfield Park, Manvers, Wath-upon-Deerne, Rotherham, S63 5DB T. +44(0) 1709

763839 Samples Department: +44(0) 1709 763805.

Order Free Samples Online E. samples@paragon-carpets.co.uk

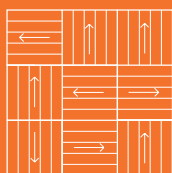
www.paragon-carpets.co.uk | www.mat-works.co.uk



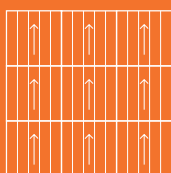
i colour wheel www.paragon-app.com



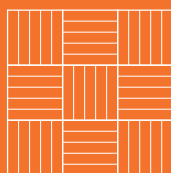
Download our free apps NOW



RANDOM LAY DESIGN



BROADLOOM DESIGN



TESSELLATED DESIGN



BREEAM® 'A+' Rated



AVAILABLE
FROM STOCK

Search Paragon Carpets

