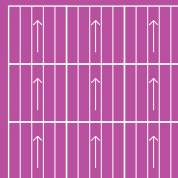


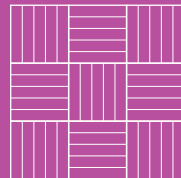


Draco

10 Colourways



BROADLOOM DESIGN



TESSELLATED DESIGN



AVAILABLE
FROM STOCK

Draco

10 Colourways

 **MADE IN
BRITAIN**



Heavy
Contract

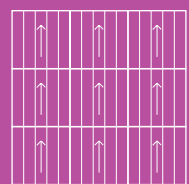
Universal Nylon 6.6

10 Year
Warranty

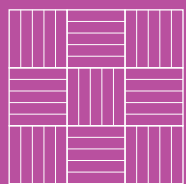
10
Colourways

100% Envirobaser-
minimum of 50%
recycled material

Draco



BROADLOOM DESIGN



TESSELLATED DESIGN



LOWEST CARBON
EMISSIONS
TILE FACTORY IN THE EU



paragon3R
RECOVER • RECYCLE • REUSE

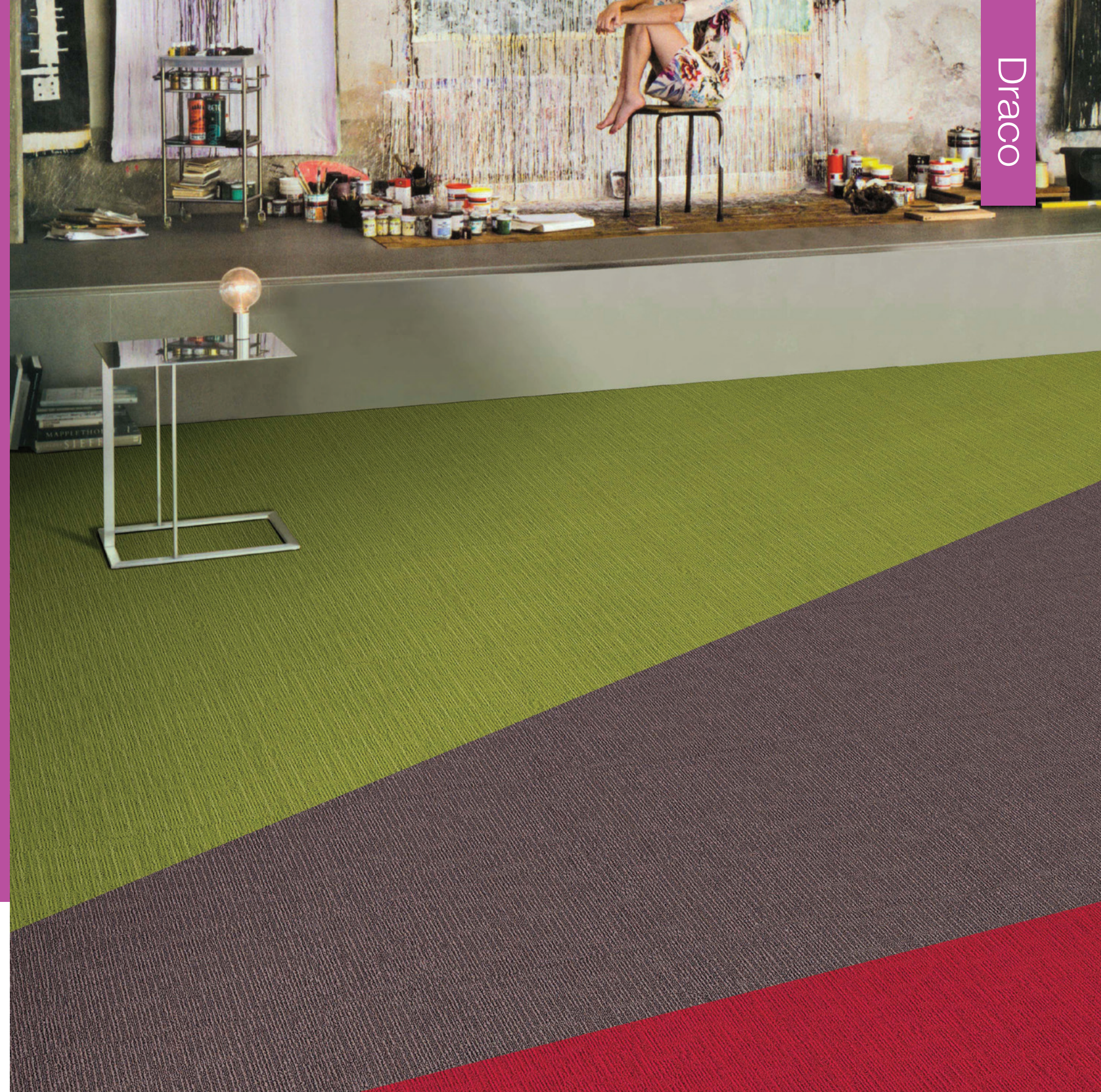


MADE IN BRITAIN

AVAILABLE
FROM STOCK



Yarn Construction	Universal Nylon 6.6
Pile Height	4.5mm / 3.0mm
Backing	100% Envirobase - minimum of 75% recycled material
Additional Backing	100% Komfort Bac available on requestDimensions 50cm x 50cm
Wear Classification	Heavy Contract
Anti-static	Less than 2kV
Flammability	Cfl-s1
Castor Chair Test	BS EN 985 continuous use
Warranty	10 Years
VOC Content	E1 in relation to EN 14041:2004



Draco



Farfield Park
Manvers
Wath-upon-Dearne
Rotherham, S63 5DB

T. +44 (0) 1709 763 839
F. +44 (0) 1709 763 813
E. sales@paragon-carpets.co.uk
W. www.paragon-carpets.co.uk

INSTALLATION

Sub floors should be clean, dry and flat and prepared in accordance with BS5325. Timber floors should be covered with plywood or other appropriate sheet materials. For tiles use F Ball tackifier F41 or Laybond 79. Tiles may be laid tessellated or broadloom. Tiles should be allowed to condition for a minimum of 24 hours at the expected temperature and humidity prevailing when the building is in use. Always use seam sealer if an impermeable finish is required. Further installation information is available from the Paragon Sales Office.

COLOUR

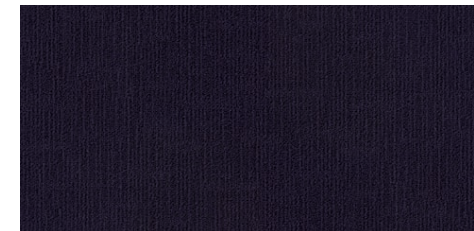
For technical reasons, as with all textile materials, it may not be possible to colour match from different batches. Orders requiring colour match should be placed at the same time. Production may therefore show variations to the sample card.

MAINTENANCE

It is recommended that a maintenance schedule be initiated from the date of installation to achieve maximum life expectancy of the product. Regular vacuum cleaning with a twin motored upright vacuum cleaner is essential. All spillages and stains should be attended to immediately. For detailed information, please consult the Paragon cleaning and maintenance guide. It is imperative that all internal carpets are well protected from outside soiling and moisture by the use of barrier matting such as MatWorks, also available from Paragon.



Juza
(LRV - Y18.53)



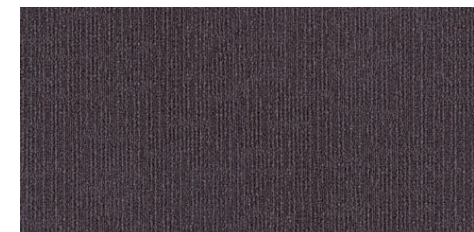
Errakis
(LRV - Y1.77)



Thuban
(LRV - Y5.59)



Struve
(LRV - Y6.32)



Keplar
(LRV - Y3.30)



Eitanin
(LRV - Y10.92)



Kuma
(LRV - Y7.51)



Asuia
(LRV - Y18.66)



Tyl
(LRV - Y7.02)



Adib
(LRV - Y4.74)

NOTE : Results are based on internal testing of new unused products



Farfield Park
Manvers
Wath-upon-Deerne
Rotherham, S63 5DB
T. +44 (0) 1709 763 839
F. +44 (0) 1709 763 813
E. sales@paragon-carpets.co.uk
W. www.paragon-carpets.co.uk

545333 12	Certificate No: EM873345 Fully accredited with ISO14001	FM00644 BS EN ISO 9001		
EN 14041:2004 Product Type Bitumen backed tufted carpet tile Reaction to fire Class Bfl-s1 Slipperiness NPD				



Experience Carpet Tiles

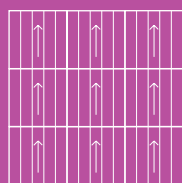
paragon
CARPET TILES



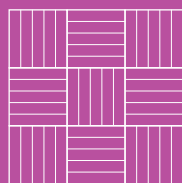
Draco

10 Colourways

A Division of National Floorcoverings Ltd.
Farfield Park, Manvers, Wath-upon-Dearne, Rotherham, S63 5DB T. +44(0) 1709 763839
Samples Department: +44(0) 1709 763805.
Order Free Samples Online E. samples@paragon-carpets.co.uk
www.paragon-carpets.co.uk | www.mat-works.co.uk



BROADLOOM DESIGN



TESSELLATED DESIGN



AVAILABLE
FROM STOCK



i colour wheel www.paragon-app.com



Download our free apps NOW

Search Paragon Carpets

