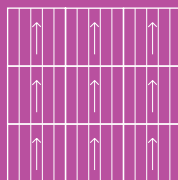


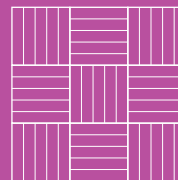


Inspiration Collection

24 Colourways



BROADLOOM DESIGN



TESSELLATED DESIGN



AVAILABLE
FROM STOCK

Inspiration Collection

24 Colourways



Heavy Contract

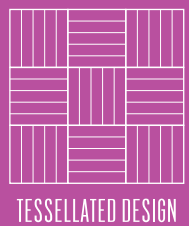
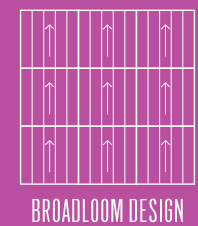
10 Year warranty

100% Solution Dyed Nylon

Suitable for use with computers

Recyclable - Product can be repurposed at the end of its lifecycle as a non standard option

Total recycled content of up to 75%



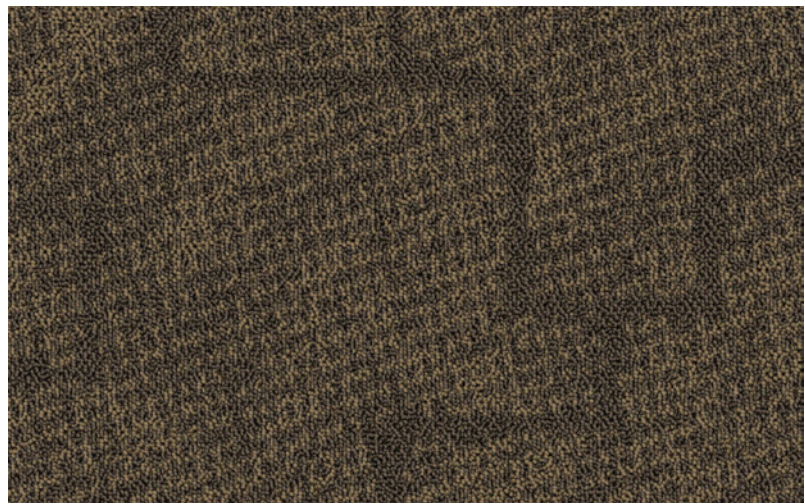
AVAILABLE FROM STOCK



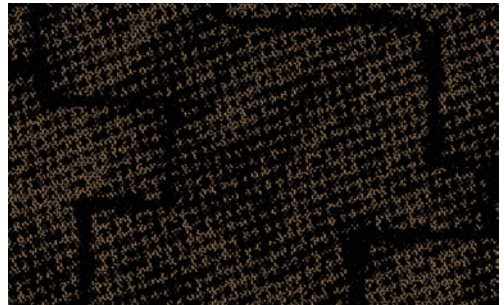
Inspiration Collection

Phase

MESH



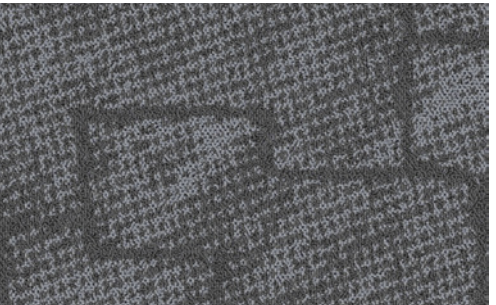
1745L Burly Wood (LRV - Y8.43)



9748L Satin Ash (LRV - Y4.20)



8778L Shadow Bone (LRV - Y3.11)



8773L Sonic Coal (LRV - Y12.69)



8 775L Obsidian Flash (LRV - Y5.10)



6755L Mild Sienna (LRV - Y2.04)

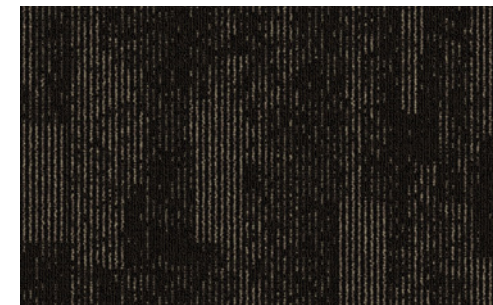
Mesh



PHASE



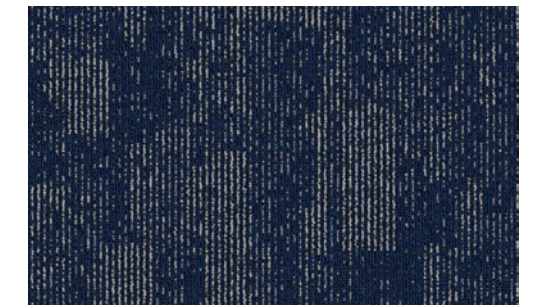
3627B Navajo Brown (LRV - Y3.24)



1648B Charged Metal (LRV - Y2.69)



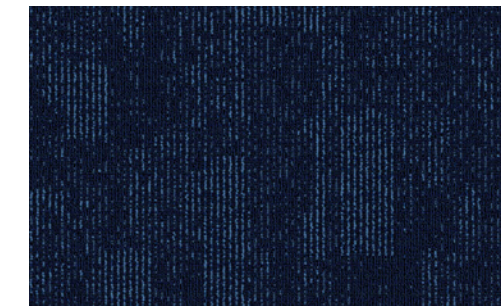
8677B Virtual Ebony (LRV - Y2.87)



6658B Cloud Indigo (LRV - Y5.07)



8675B Gainsboro (LRV - Y6.13)



6657B Dodger Blue (LRV - Y2.78)

Phase

Style 1/12th Gauge
Yarn Construction 100% Solution Dyed Nylon
Pile Yarn Weight 610 gsm
Pile Height 2.5mm - 5.5mm
Total Weight 4310gsm
Total Thickness 7mm +/- 0.5mm
Backing 100% Envirobase - minimum of 75% recycled material
Additional Backing 100% Komfort Bac available on request
Dimensions 50cm x 50cm
Wear Classification Heavy Contract Class 33
Luxury Class LC1
Anti-static < 2kV body voltage. Suitable for use with computers
Colour Fastness To Light (ISO105 – BO2) > 5
To Water (ISO 105 - E01) > 4
To Rubbing (ISO 105 - X12) > 4
Flammability Floorcoverings tested to BS4790
(Hot Metal Nut Test) Low Radius of Char
BS EN 13501-1 Bfl-s1
Castor Chair Test Suitable for continuous use
Warranty 10 Year Warranty
Voc Content E1 in relation to EN 14041

Greda

Style 1/12th Gauge
Yarn Construction 100% Solution Dyed Nylon
Pile Yarn Weight 750 gsm
Pile Height 3mm - 6.5mm
Total Weight 4450gsm
Total Thickness 8mm +/- 0.5mm
Backing 100% Envirobase - minimum of 75% recycled material
Additional Backing 100% Komfort Bac available on request
Dimensions 50cm x 50cm
Wear Classification Heavy Contract-
Luxury Class Class 33
Anti-static < 2kV body voltage. Suitable for use with computers
Colour Fastness To Light (ISO105 – BO2) > 5
To Water (ISO 105 - E01) > 4
To Rubbing (ISO 105 - X12) > 4
Flammability Floorcoverings tested to BS4790
(Hot Metal Nut Test) Low Radius of Char
BS EN 13501-1 Bfl-s1
Castor Chair Test Suitable for continuous use
Warranty 10 Year Warranty
Voc Content E1 in relation to EN 14041

Mesh

Style 1/10th Gauge
Yarn Construction 100% Solution Dyed Nylon
Pile Yarn Weight 750 gsm
Pile Height 2.5 mm / 5.5mm
Total Weight 4450gsm
Total Thickness 7mm +/- 0.5mm
Backing 100% Envirobase - minimum of 75% recycled material
Additional Backing 100% Komfort Bac available on request
Dimensions 50cm x 50cm
Wear Classification Heavy Contract
Luxury Class Class 33
Anti-static < 2kV body voltage. Suitable for use with computers
Colour Fastness To Light (ISO105 – BO2) > 5
To Water (ISO 105 - E01) > 4
To Rubbing (ISO 105 - X12) > 4
Flammability Floorcoverings tested to BS4790
(Hot Metal Nut Test) Low Radius of Char
BS EN 13501-1 Bfl-s1
Castor Chair Test Suitable for continuous use
Warranty 10 Year Warranty
Voc Content E1 in relation to EN 14041

Cresta

Style 1/12th Gauge
Yarn Construction 100% Solution Dyed Nylon
Pile Yarn Weight 750 gsm
Pile Height 3mm / 5mm
Total Weight 4450gsm
Total Thickness 7mm +/- 0.5mm
Backing 100% Envirobase - minimum of 75% recycled material
Additional Backing 100% Komfort Bac available on request
Dimensions 50cm x 50cm
Wear Classification Heavy Contract-
Luxury Class Class 33
Anti-static < 2kV body voltage. Suitable for use with computers
Colour Fastness To Light (ISO105 – BO2) > 5
To Water (ISO 105 - E01) > 4
To Rubbing (ISO 105 - X12) > 4
Flammability Floorcoverings tested to BS4790
(Hot Metal Nut Test) Low Radius of Char
BS EN 13501-1 Bfl-s1
Castor Chair Test Suitable for continuous use
Warranty 10 Year Warranty
Voc Content E1 in relation to EN 14041



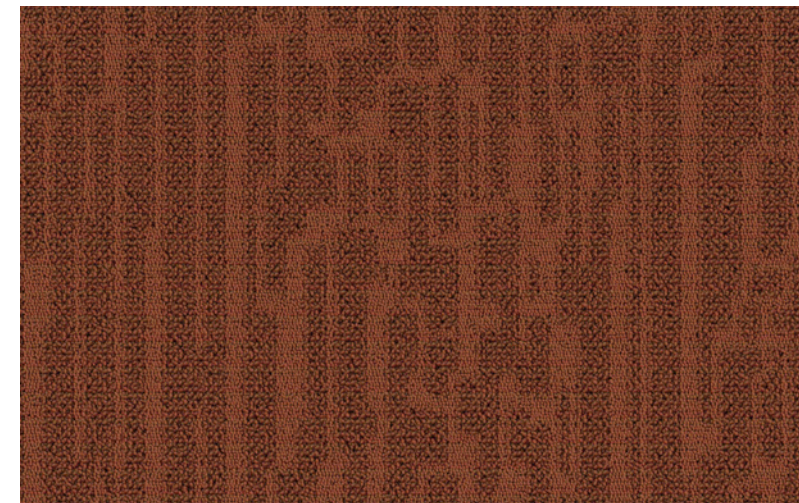
Farfield Park
Manvers
Wath-upon-Dearne
Rotherham, S63 5DB

T. +44 (0) 1709 763 839
F. +44 (0) 1709 763 813
E. sales@paragon-carpets.co.uk
W. www.paragon-carpets.co.uk

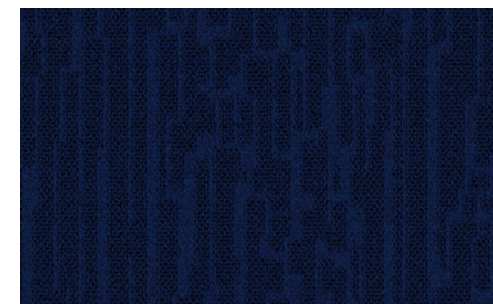


BREEAM® 'A+' Rated

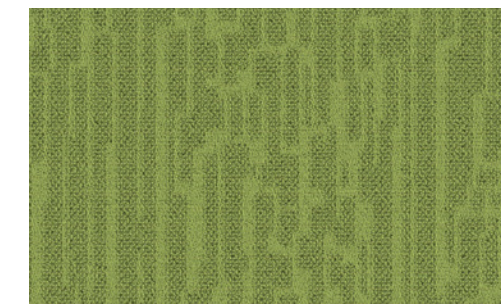
GREDA



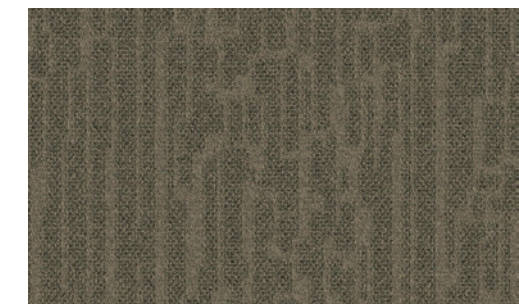
3730V Moccasin (LRV - Y10.37)



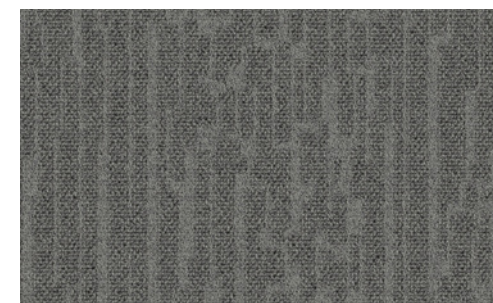
6755V Electric Azure (LRV - Y3.77)



5761V Lime Spring (LRV - Y24.37)



1763V Cracked Station (LRV - Y12.20)



8773V Livid Grey (LRV - Y10.40)



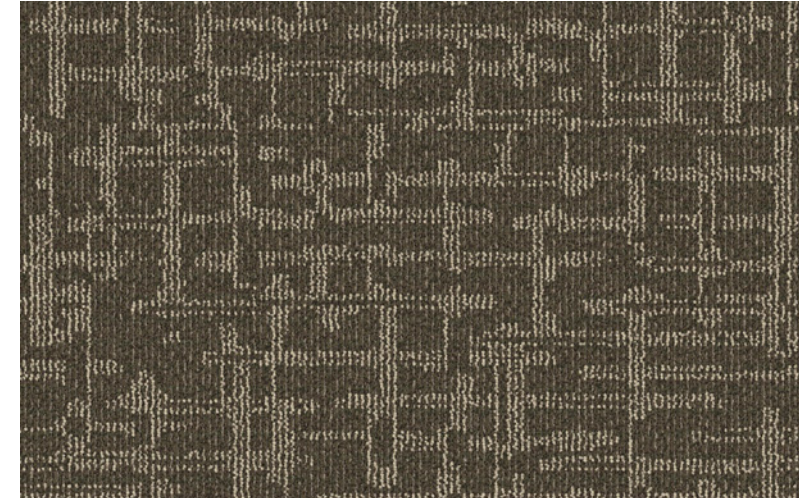
8775V Ghost Machine (LRV - Y4.19)





Cresta

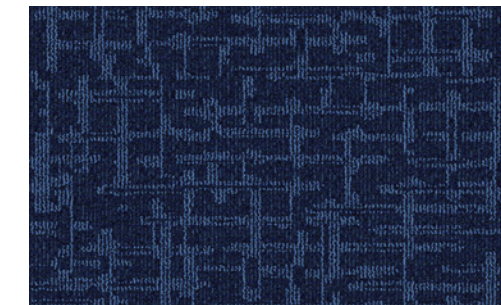
CRESTA



1746N Lucent Grey (LRV - Y7.63)



9749N Bear Silver (LRV - Y4.15)



6755N Glam Cyan (LRV - Y3.60)



9778N Castle Black (LRV - Y1.91)



8779N Silver Wolf (LRV - Y3.94)



1790N Polar Trek (LRV - Y18.94)

INSTALLATION

Sub floors should be clean, dry and flat and prepared in accordance with BS5325. Timber floors should be covered with plywood or other appropriate sheet materials. For tiles use F Ball tackifier F41 or Laybond. Tiles may be laid tessellated or broadloom. Tiles should be allowed to condition for a minimum of 24 hours at the expected temperature and humidity prevailing when the building is in use. Further installation information is available from the Paragon Sales Office.

COLOUR

For technical reasons, as with all textile materials, it may not be possible to colour match from different batches. Orders requiring colour match should be placed at the same time. Production may therefore show variations to the sample card.

MAINTENANCE

It is recommended that a maintenance schedule be initiated from the date of installation to achieve maximum life expectancy of the product. Regular vacuum cleaning with a rotary brush vacuum cleaner is essential. All spillages and stains should be attended to immediately. For detailed information, please consult the Paragon cleaning and maintenance guide.

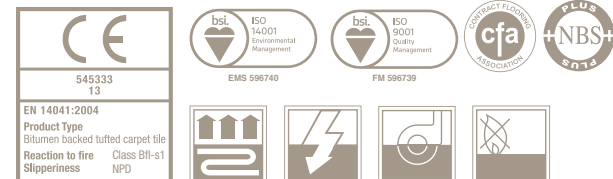
DISCLAIMER

Paragon Carpets reserve the right to change without notification the published technical specification or colour of the product.



Farfield Park
Manvers
Wath-upon-Dearne
Rotherham, S63 5DB

T. +44 (0) 1709 763 839
F. +44 (0) 1709 763 813
E. sales@paragon-carpets.co.uk
W. www.paragon-carpets.co.uk



Inspiration Collection



Phase

Experience Carpet Tiles

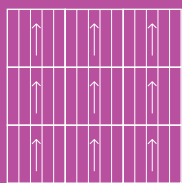
paragon
CARPET TILES



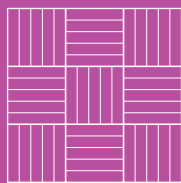
Inspiration Collection

24 Colourways

A Division of National Floorcoverings Ltd.
Farfield Park, Manvers, Wath-upon-Dearne, Rotherham, S63 5DB T. +44(0) 1709 763839
Samples Department: +44(0) 1709 763805.
Order Free Samples Online E. samples@paragon-carpets.co.uk
www.paragon-carpets.co.uk | www.mat-works.co.uk



BROADLOOM DESIGN



TESSELLATED DESIGN



AVAILABLE
FROM STOCK



i colour wheel www.paragon-app.com



Download our free apps NOW

Search Paragon Carpets

