

Platinum

HETEROGENEOUS VINYL

Irresistible
endurance

CONTENTS

- CREATE DISTINCT SPACES FROM FLOORS TO WALL 3
- GET MOVING IN A COMFORTABLE SPACE 5
- A CONCENTRATION OF TECHNOLOGIE 6
- IMPERVIOUS TO ALL ACTIVITY 7
- FULL PERFORMANCE COMPACT FLOORING 9
- DURABLE FLOORING, COMPULSORY DESIGN 11
- A FULL SET OF SOLUTIONS FOR ONE BUILDING 13
- FULL SOLUTION REFERENCES 14
- INSTALLING FLOORING TO ENSURE LONG LIFE 16
- A METHODOICAL APPROACH TO CLEANING 17
- PLATINIUM TENDER SPECIFICATION 18
- TECHNICAL DATA SHEET 19



PROTECTWALL
 JUNGLE - INTENSE 069
 UNI - DARK AQUA T35

PLATINIUM
 PLAZZA - EGGERLANT 030
 SNOW - DENIM 042

CREATE DISTINCT SPACES FROM FLOORS TO WALL

For busy places and buzzing spaces, nothing stands up to the incessant activity of exceptionally high traffic areas like Tarkett's Platinum range. Stairs, sockets, indentations, the technically engineered heterogeneous vinyl flooring shrugs them all off. And like all Tarkett HE premium collections, it is 100% phthalate-free.

Particularly adapted to Healthcare and Education environments, the entire Platinum collection's robust longevity is thanks to the in-laid manufacturing process. Incorporated into the flooring itself, including the generous opaque wear layer of 1 mm on all references, the design has depth and remains extremely stable over time.

100%
 phthalate-free

Design is complemented by serious performance for compact acoustic flooring. On thin concrete subfloors, Platinum absorbs up to 17dB of sound, provides excellent reliability and resists indentation.

Finally, the collection's durability is further enhanced by the 72 references available in eight design variations. Visually expressing Platinum's resistance, the profoundly matte vegetal and mineral nuances were inspired by the inherent strength found in the natural world.

DESIGN



140+
 flooring references

PERFORMANCE



Excellent indentation to acoustic ratio

NEW Acczent Platinum* (compact acoustic) **0.03mm / 9 dB**
Tapiflex Platinum* (acoustic) **0.07 mm / 17 dB**

Extreme resistance



* In-laid product construction
 - 1 mm opaque wear layer on all products

Smooth rolling for heavy loads



20% improved rollability
 on compact & acoustic profiles**

Practical hygiene & maintenance



High-end PU treatment withstands wear and cleans conveniently



Full Floor, Wall & Stairs coordination

* resistance to indentation / sound impact reduction
 **Vs. former range

GET MOVING IN A COMFORTABLE SPACE

A strong focus for Tarkett has always been to provide flooring that underscores a space's ambience while also keeping a low profile. Air quality, movement and noise are prime areas of attention.

A pillar of Tarkett's sustainability strategy has always been designing and making products that contribute to the health and well-being of occupants.

In 2014, the company therefore decided to take the radical step of eliminating phthalates from its vinyl flooring production in Europe. We replaced it with phthalate-free plasticizers that are approved for food containers and toys for young children.

Today, with the launch of our 100% phthalate-free Excellence collection, we are proactively meeting consumer concerns. For creating healthy spaces where people live, work, play and learn, Tarkett is your partner.

phthalate-free
100%

Breathe Easy

Good air quality is crucial when people spend 90% of their time indoors. As well as no phthalates, Platinum has very low levels of volatile organic compounds (VOCs).



VOCs
10 µg/m³

over 100 times lower than EU standard EN ISO 16000

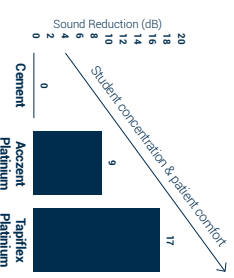
Soft Step

Building occupants benefit from Tarkett's expertise in shock absorption, usually found in sports flooring. Feet are gently cushioned throughout the whirlwind rush of daily activity.



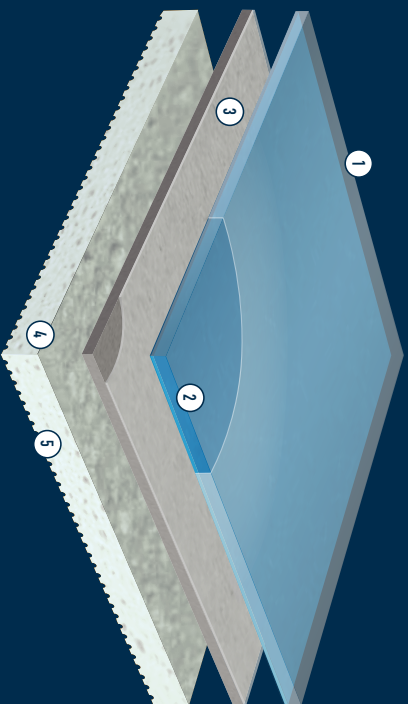
Attenuated Noise

By absorbing noise, Tarkett acoustic floorings take the edge off busy environments and encourage quiet interaction.



PROTECTWALL
JUNGLE - BEIGE 122
UNI - LIGHT BEIGE 122
UNI - SUPER WHITE 221

A CONCENTRATION OF TECHNOLOGY



- ① PUR treatment is a photo-reticulated coating that is highly resistant to abrasion and scratches.
- ② Opaque wear layer incorporates inlaid designs for higher perceived resistance
- ③ High density, non-woven glass fibre reinforcement for high dimensional stability and resistance to furniture
- ④ Solid homogeneous calendared sheet made of recycled vinyl for resistance to indentation and tearing
- ⑤ The Tapiflex version high density closed-cell foam backing for sound reduction, higher rollability and underfoot comfort

IMPERVIOUS TO ALL ACTIVITY

Platinum has been conceived to stand up to the non-stop busyness of fast environments. Over time and throughout daily events, its appearance remains fastidiously intact.



**Extreme
Resistance**

A 1mm wear layer is already robust protection. With the design incorporated into the 1mm-thick, opaque wear layer, shocks and scratches are virtually invisible.

**1mm opaque wear layer
both acoustic (Tapiflex)
& compact (Accent) references**



**Improved
Rollability**

The product's core of underlayer and fibreglass has been renewed and strengthened, greatly improving rolling performance.

**20% easier rolling
(Tapiflex Platinum)
compared to previous Evolution range**



**Sturdy Through
and Through**

Platinum's manufacturing process uses inlaid construction. Designs aren't printed, but are manufactured as part of the flooring itself. Indentation and tearing are minimal, and appearance remains extremely stable over time.

Tapiflex	Accent
0.07 mm	0.03 mm
Resistance to indentation (best measured value)	



**PUR Treatment
Reinforces Durability**

Tarkett's PUR surface treatment repels stains and abrasions, and facilitates cleaning. Stay immaculate and hygienic with minimal water and neutral detergents.

**Up to 25% reduction in the cost
of maintenance and cleaning***

*Refer to Tarkett Life Cycle Cost (LCC) software

PROTECTWALL
 JUNGLE - GREY 072
 UNI - WHITE GREY 132



PLATINUM
 SUGAR - CORAL 052
 MELT - CORAL 002

FULL PERFORMANCE COMPACT FLOORING

Accent Platinum smoothly executes the role of compact flooring made to resist wear in places of exceptionally high traffic while deftly absorbing noise to soften the buzz of activity.



For the most demanding requirements in high traffic areas, Accent Platinum answers ably, both in acoustics and resistance to indentation.

Reduces sound by **9 dB**

0.03 mm indentation



Available in a standard selection of colours, expand your options by ordering any of the Excellence collection's printed designs using the Accent Platinum inlaid manufacturing process for extreme durability.

Platinum **72** inlaid references
 Excellence **127+** printed designs*

*option (600m² / 5 weeks leadtime)

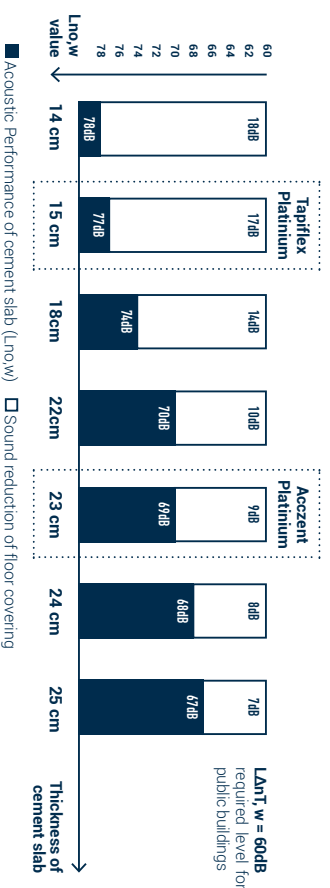


Accent Platinum is right at home on thin concrete subfloors, absorbing noise effectively and durably.

Calculating sound reduction (ΔL_{nT,w}) in a building takes into account, among other criteria, the cement slab's acoustic performance (L_{n0,w}) and the floor covering's impact sound reduction (ΔL_w).

Thicker cement slabs have better acoustic performance. To meet L_{n0,w} requirements, which are 60dB in public buildings (according to local regulations) flooring therefore needs to reduce impact sound by a smaller amount.

As shown in the graph below, Accent Platinum, reaching 9dB in impact sound reduction, achieves the required 60dB on a 23cm-thick cement slab (L_{n0,w} = 69dB). Tapiflex Platinum, reaching 17dB, reduces sound to the required 60dB on a 14cm-thick cement slab (L_{n0,w} = 77dB).



DURABLE FLOORING, COMPULSORY DESIGN

Above and beyond its long-lasting capabilities, Platinum is available in a select range of colours and patterns inspired by the natural world to distil strength and longevity within spaces.



Colour Your World

Choose from a number of colours and variations to add harmony and impact to busy places.

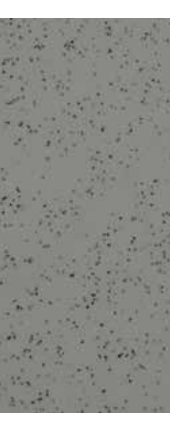
140+ references **90%** new



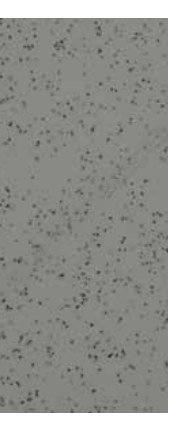
Seamless Finish

Unique multicolour welding rods give the most realistic and seamless aspect to all decors when installed.

Uni-coloured welding rod



Multi-coloured welding rod



Harmonised Design Concept

All patterns and colours can be mixed and matched with each of Tarkett's HE vinyl ranges:

**Accent and Tapiflex Excellence,
Tapiflex Stairs, ProtectWALL
& accessory collections**

Design story

The 72 profoundly matte references in Platinum's selection revolve around eight design variations: Choose from among false solids, dappled surfaces and colour gradients. In all, the designs emerge from below, as if gently surfacing to reach the light. Forestrange from the vibrantly colourful and rich, to more subdued stone and vegetal hues, revitalising, calming, reassuring and connecting by turn.

SUGAR - Turquoise 057



PROTECTWALL
BRUSHED METAL - SILVER 054
UNI - SUPER WHITE 221

PLATINUM

PLAZZA - BLACK 031

MELT - LIGHT GREY 009

UNI - BLACK 939

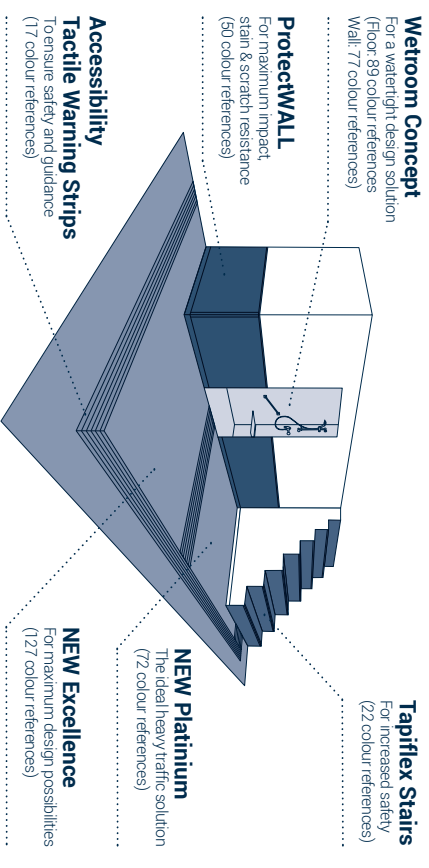
A FULL SET OF SOLUTIONS FOR ONE BUILDING

The Platinum collection has been designed to harmonise with Excellence, ProtectWALL, Tapiflex Stairs and accessory ranges. We have also created cross-over patterns that appear in all collections so that your architectural project displays consistent design throughout. Explore and install the full solution!

PROTECTWALL
 TRANSITION - BLUE GREEN 066
 UNI - BRIGHT ICE BLUE 048
 UNI - SUPER WHITE 2CR 061



PLATINUM
 MELT - TURQUOISE 005
 MELT - PETROL 012



Accessories for a perfect finish

Optimize building orientation, navigation and safety with our dedicated accessories range.



WELDING RODS
 Secures the junction between 2 rolls of flooring or wall and floor coverings.



PVC COVER FORMER
 Forms a cove where floor covering rises up to the wall, creating a smooth angle under flooring for a perfect hygienic and watertight finish.



TRANSITION PROFILE
 Used to join different floorings of the same or slightly different heights.
 Dark grey: 1452.000 / Light grey: 1452.001 / White: 1452.002



PRE-FORMED SKIRTING
 Preformed set-in skirting made of PVC flooring, reinforced with polyurethane on backside. Welded to the floor covering and glued to the wall.
 60/90/100x100/200x240mm
 Available on request with all colours

ALSO AVAILABLE

- Expansion joints
- Tankaprotect

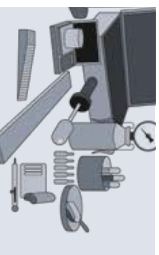
Please also ask for more information from your [tankatrep](#).

INSTALLING FLOORING TO ENSURE LONG LIFE

Tarkett has a wide variety of techniques and tips to ensure perfect installation and keep your flooring in good condition for years to come.

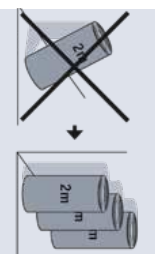
STEPS IN INSTALLING

1. Subfloor control



- The subfloor must be sound, hard, flat, clean and free from all types of marks, debris & residues, and not exposed to humidity.
- Absorbency must be checked and when needed, treated with a primer to have moderately absorbent subfloor.
- Refer to local standards for detailed rules and control methods.
- Stop underfloor heating for minimum 48h before installation and maintain the temperature in the room with an alternative heating source.

2. Before installation



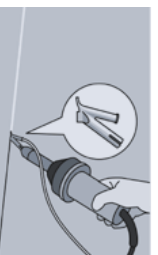
- Store 2m large rolls vertically in storage area. Larger rolls should be stored horizontally.
- Let the flooring acclimatize at least 24h before laying and out sheets.
- Define your layout to ensure whenever possible that joins do not coincide with doorways and main traffic lanes.
- If the room is square, the sheets should run parallel to the incoming light. In long, narrow rooms the sheets can be installed along the length of the room.

3. Rolls installation



- But join when edges are straight, if not, overlap the edges and trim the two sheets simultaneously (double cut method).
- Fold the first half of the sheets.
- Apply acrylic adhesive with a spatula (TKB A1 for compact, TKB A2 for acoustic) - refer to adhesive manufacturer's instruction for waiting time.
- Fold back the first half of the flooring into the adhesive and press.
- Repeat this operation on the other half.
- Excess of material close to walls and obstacles can be trimmed/flushed (freehand cut).
- Use a heavy roller on the whole surface to ensure final bonding.

4. Hot welding



- Wait minimum 24h after installation.
- Hot weld with 4mm PVC welding rod, groove (2/3 of the compact layer) and weld at approx. 400°C with a hot speed nozzle.
- Trim the welding rod in 2 steps (immediately and after 5 minutes) with a Mozart knife.

5. After installation

- Clean working area from all adhesive marks, stains and dust.
- Prevent soiling by protecting the area.
- Open the area to normal traffic 48 hours after installation and move furniture after 72 hours.

For more detailed explanations, or specific installation methods (core forming, tiles installation, Aczent Unik loose-lay installation), please refer to full installation notice. Please contact your local representative for any questions. Tarkett accepts no liability for adhesives and levelling compounds used, including those recommended.

A METHODOICAL APPROACH TO CLEANING

Tarkett's PUR surface treatment facilitates cleaning and decreases the need for water and solvents, reducing environmental impact. Regular and attentive cleaning maintains flooring in between periodic deep-clean buffing sessions.

General Advice

- Clean the floorcovering regularly, as this is more cost-effective and hygienic than occasional heavy-duty cleaning.
- Black rubber wheels and rubber feet can discolour the floorcovering. All chair and table legs should have good quality floor protectors. Felt pads are not recommended in commercial interiors. Hard plastic is preferred.
- Install doormats at the entrance of the buildings to catch humidity, dirt, dust etc. They must be at least three strides long (approx. 1.5m).
- Always follow manufacturers' recommendations (detergent, cleaning machine...).

SETTING IN TRAFFIC	ACTIONS	INSTRUCTIONS
	1. Removing dust and gravel	<ul style="list-style-type: none"> – Dry mopping. – Vacuum cleaning.
	2. Cleaning	<ul style="list-style-type: none"> – Mechanical cleaning with scrubbing machine – red pad, medium speed – and water vacuuming or combined machine. – Use neutral detergent (pH 6/8) or alkaline detergent (pH 8/12). In case of heavy soiling, if an alkaline detergent (pH 8/12) is used, the flooring should be rinsed with water and water vacuumed.
	3. Stain removal	<ul style="list-style-type: none"> – A detergent should be used to remove work-site stains (glue, paint...) according to the nature of the stain. – Do not use abrasive pads.
DAILY CLEANING	ACTIONS	INSTRUCTIONS
	1. Removing dust and gravel	<ul style="list-style-type: none"> – Dry mopping. – Vacuum cleaning.
	2. Cleaning (if and where it's necessary)	<ul style="list-style-type: none"> – With a combined machine (red pad, medium speed). – Use neutral detergent (pH 6/8).
	3. Stain removal	<ul style="list-style-type: none"> – For stubborn stains on the floor, use an alkaline detergent (pH 9/10) dilution according manufacturer instruction, let it work during 1 minute and sweep with a white clean cloth.
PERIODICAL CLEANING	ACTIONS	INSTRUCTIONS
	1. Light soiling	<ul style="list-style-type: none"> – Machine cleaning: use a scrubbing machine fitted out with soft white brushes or red pads at medium speed. – Use detergent neutral or alkaline (pH 7/9).
	2. Heavy soiling	<ul style="list-style-type: none"> – Apply a cleaning solution (pH 10-11, after dilution) to the flooring and allow to act for 5-10 min. – Machine cleaning: use a scrubbing machine fitted out with soft white brushes or red pads at medium speed. – Vacuum up the soiled water immediately. – Rinse with clean water and allow the floor to dry.
	3. Stain removal	<ul style="list-style-type: none"> – For stubborn stains on the floor, use an alkaline detergent (pH 9/10) dilution according manufacturer instruction, let it work during 1 minute and sweep with a white clean cloth.

PLATINIUM TENDER SPECIFICATION

Tapiflex Platinum 100

The selected flooring similar to Tapiflex Platinum 100 belongs to the acoustic vinyl floors category under the EN standard 649, available in 2m wide sheet with a Group T wear rating.

The product formulation does not contain phthalate based plasticizer. It is built on a calendared backing layer made of recycled vinyl flooring material. It contains over 29% of recycled material.

The product is **built in-laid** with a high density foam backing reinforced with glass fibre and a high quality printed design. **The opaque wear layer of 1.02mm does not contain fillers** and is reinforced with a UV photo crosslinked polyurethane including particles of alumina TopClean XP™ treatment, which permanently suppresses any wax and regenerating polish spray maintenance operations.

It has an **acoustic performance of 17dB, an acoustical improvement of Class C and a static indentation resistance ≤ 0,09mm.**

It offers a dimensional stability ≤0,10% according to EN ISO 23999 standard. Its gloss rate is ≤ 5% and it can be installed with **multicolour welding rods to ensure seamless finish.**

Its emission rate of volatile organic compounds in air is very low, measured after 28 days according to EN 16516 standard. **Close to zero emission (quantification limit), TVOC, TSVOC and formaldehyde emissions are below than 10 µg/m³.**

It is free of formaldehyde and **100% REACH compliant.**

It is 100% recyclable and installation off-cuts can be collected and recycled in new products through the Tarkett ReStart® program.

Tapiflex Platinum comes with a **10 Year Warranty.**

Accent Platinum 100

The selected flooring similar to Accent Platinum 100 belongs to the compact vinyl floors category under the ISO standard 10582, available in 2m wide sheet with a Binder Content of Type I.

The product formulation does not contain phthalate based plasticizer. It is built on a calendared backing layer made of recycled vinyl flooring material. It contains over 21% of recycled material.

The product is **built in-laid**, the opaque wear layer of 1,02mm does not contain fillers and is reinforced with a UV photo crosslinked polyurethane including particles of alumina TopClean XP™ treatment, which permanently suppresses any wax and regenerating polish spray maintenance operations.

It has an **acoustic performance of 9dB, an Acoustical improvement of Class B and a static indentation resistance ≤ 0,04mm.**

It offers a dimensional stability ≤0,10% according to EN ISO 23999 standard. Its gloss rate is ≤ 5% and it can be installed with **multicolour welding rods to ensure seamless finish.**

Its emission rate of volatile organic compounds in air is very low, measured after 28 days according to EN 16516 standard. **Close to zero emission (quantification limit), TVOC, TSVOC and formaldehyde emissions are below than 10 µg/m³.**

It is free of formaldehyde and **100% REACH compliant.**

It is 100% recyclable and installation off-cuts can be collected and recycled in new products through the Tarkett ReStart® program.

Accent Platinum comes with a **10 Year Warranty.**

More excellent reasons to choose Tarkett Platinum

- ✓ 100% Phthalate Free
- ✓ Zero formaldehyde
- ✓ 100% recyclable
- ✓ Test reports and certificates available upon request
- ✓ Optimal indoor air quality
- ✓ TVOC <10µg/m³ after 28 days
- ✓ FloorScore® certified
- ✓ ISO 14001 certified production site
- ✓ REACH Compliant and CE Marking

TECHNICAL DATA SHEET

SPECIFICATION DATA

The Platinum range, with its in-laid construction available in 72 decors, offers one of the most performing heavy-traffic heterogeneous vinyl solution on the market. The range is 100% phthalate-free and the VOC air emission rate is very low, less than 10µg/m³. The range includes an acoustic solution (17dB) and a compact acoustic solution (9dB) in roll format, both with a 10 year warranty.

TECHNICAL DATA	STANDARD	TAPIFLEX PLATINIUM 100 (SHEET)	ACCENT PLATINIUM 100 (SHEET)
CLASSIFICATION	EN 651 EN ISO 10582 EN ISO 10874	Heterogeneous Acoustic Vinyl	Heterogeneous Compact Vinyl
Wear group	EN 651	T	-
Wear layer binder content	EN ISO 10582	-	Type I
TECHNICAL CHARACTERISTICS			
Total thickness	EN ISO 24346	3,10 mm	2,45 mm
Total weight	EN ISO 23997	3250 g/m²	3200 g/m²
Wear layer thickness	EN ISO 24340	1,02 mm	1,02 mm
Form of delivery	EN ISO 24341 (rolls)	approx. 23 running metres x 200 cm	approx. 23 running metres x 200 cm
PERFORMANCES FOR CE MARKING REQUIREMENTS (EN 14041)			
Declaration of Performance	EN 14041	0170-0201-DOF-2017-11	0170-0200-DOF-2017-11
Reaction to fire	EN 13501-1	B-s1 glued over any A2, or A1, substrate (concrete) C-s1 glued over any derivate wood substrate	B-s1 glued over any A2, or A1, substrate (concrete) B-s1 glued over any derivate wood substrate
Electrostatic properties	EN 1815	≤ 20 kV	≤ 20 kV
Thermal resistance	EN ISO 10456	0,02 m² K/W	0,02 m² K/W
Slip resistance	EN 13893	µ ≥ 0,3	µ ≥ 0,3
TECHNICAL PERFORMANCES			
Residual indentation	EN ISO 24343-1	Required value: ≤ 0,20 mm Best measured value*: 0,07 mm Average measured value*: 0,09 mm	Required value: ≤ 0,10 mm Best measured value*: 0,03 mm Average measured value*: 0,04 mm
Impact sound reduction	NF EN ISO 717 / 2	ΔL _w = 17 dB	ΔL _w = 9 dB
Acoustical improvement	NF EN ISO 717 / 2	L _{w,eq} < 65 dB - Class A	L _{w,eq} < 65 dB - Class B
Slip resistance (*)	DIN 51130	P9	P9
Furniture leg	EN 424	No damage	No damage
Caster chair	ISO 4918	No damage	No damage
Carri resistant to heat	EN ISO 23999	≤ 981 mm	≤ 981 mm
Light fastness	EN ISO 105-802	≥ 6	≥ 6
Dimensional stability	EN ISO 23999	< 0,10 %	< 0,10 %
Chemical resistance	EN ISO 26987	Not affected	Not affected
Underfloor heating		Suitable	Suitable
ENVIRONMENTAL PERFORMANCES			
Total VOC emissions	ISO 16000-9	≤ 10 µg/m³ (after 28 days)	≤ 10 µg/m³ (after 28 days)
Formaldehyde	ISO 16000-3	< 10 µg/m³ (after 28 days)	< 10 µg/m³ (after 28 days)
COLLOURS		72	72

The above information is subject to modification for the benefit of further improvement. (*21/17) *No information - not binding.

*)Phasstone test slip resistance may be impacted by usage and cleaning operations.

According to the European Regulation N° 305/2011 for CE Marking the Declarations of Performance are available on our website www.tarkett.com

Tarkett's instructions regarding installation, cleaning and maintenance should be observed. Please contact Tarkett at the address shown for these instructions.



Disclaimer: Please note that products in photos are installed for creative purposes and not according to technical specifications. Please refer to Tarkett installation instructions for guidance.

CUSTOMS TARIFF: 4820 5000 00

