



VINYL FLOORCOVERING WITH
ENHANCED SLIP RESISTANCE

Safetred Ion/Aqua

INCLUDING

Protectwall & Aquarelle



PRACTICALLY STYLISH
IN EVERY WAY

SAFETRED ION & AQUA WITH PROTECTWALL & AQUARELLE

A full design offer for wet & dry rooms.

- ▣ Sustainable safety floors to TRRL >36 (R10)
- ▣ Impact resistant wallcovering
- ▣ Water impermeable wall and floor coverings
- ▣ Full range of accessories

All co-ordinated for the ultimate interior design solution.

SENSORIAL

Tarkett's flooring solutions are designed to enhance the sensorial experience. Whether it's improved sound absorption, underfoot comfort or energising colours, patterns and textures, our floors help create environments that soothe or stimulate the senses and promote physical and emotional well-being.

FUNCTIONAL

Tarkett creates durable, easy to install flooring solutions with unique surface treatments that ensure an outstanding day-in-day-out resistance with minimal cleaning and maintenance. Our high-performance floors offer the best productivity and lowest possible life cycle costs on the market to deliver excellent ROI for our clients.

ECOLOGICAL

Tarkett continually seeks to make its products in a more environmentally responsible way – through our choice of materials, use of resources and recycling/reuse at end-of-life. Our products contribute to better indoor air quality through lower VOC emissions and reduced use of chemical agents, and are designed for the lowest possible use of water and energy for cleaning to reduce their environmental footprint.

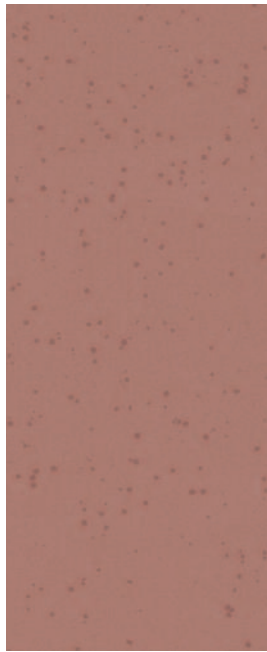


JUST ADD YOUR IMAGINATION

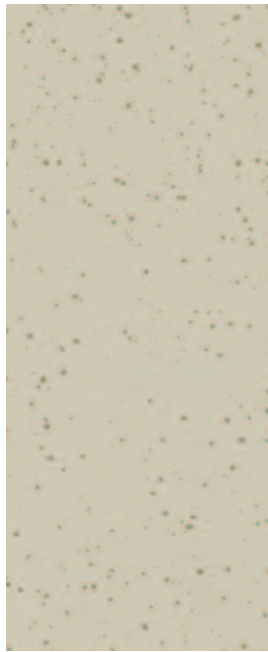




015 Chocolate
[weld rod 1287670] LRV 14.4



001 Rust
[weld rod 1287669] LRV 25.5



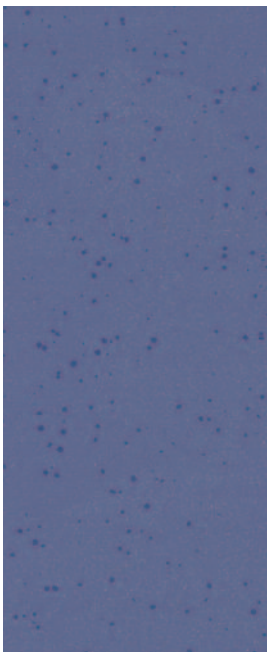
013 Sand
[weld rod 1292465] LRV 52.9



011 Mint
[weld rod 1287337] LRV 54.6



007 Light grey
[weld rod 1287279] LRV 56.8



003 Dark blue
[weld rod 128323] LRV 15.3



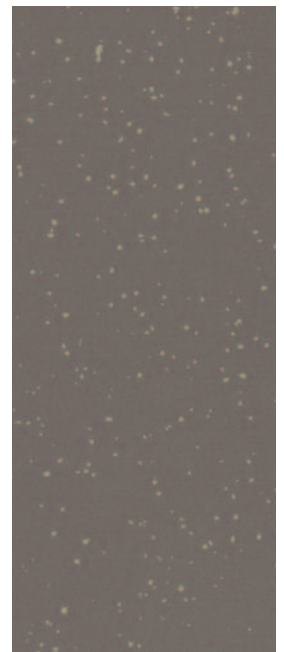
012 Sky blue
[weld rod 1287613] LRV 44.0



010 Heather
[weld rod 1287668] LRV 36.0



008 Steel
[weld rod 1287501] LRV 34.5



009 Titanium
[weld rod 1287546] LRV 15.9





015 Chocolate
[weld rod 1287478] LRV 11.1



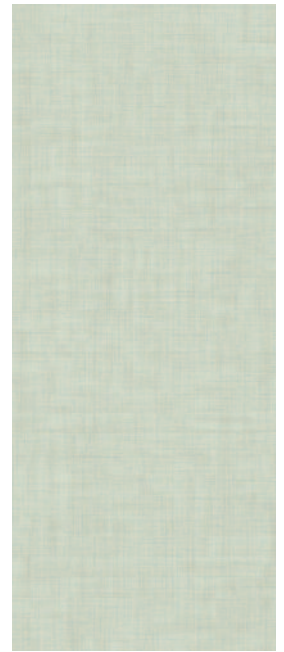
001 Rust
[weld rod 1287665] LRV 16.9



013 Sand
[weld rod 1287557] LRV 40.3



014 Latte
[weld rod 1287501] LRV 35.8



011 Mint
[weld rod 1287049] LRV 47.0



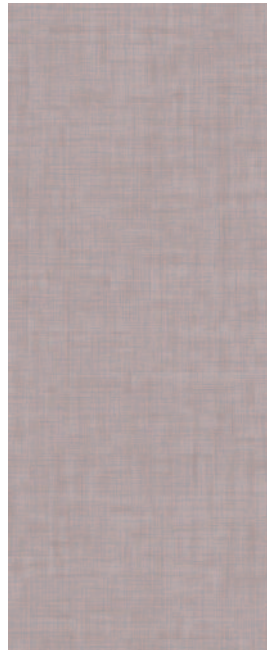
007 Light grey
[weld rod 1292455] LRV 51.7



003 Dark blue
[weld rod 1287666] LRV 9.4



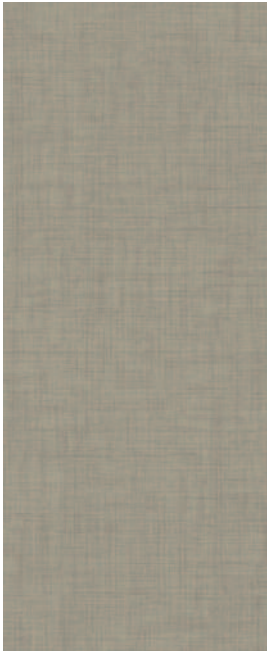
012 Sky blue
[weld rod 1287383] LRV 38.4



010 Heather
[weld rod 1287667] LRV 33.6



006 Mid grey
[weld rod 1288388] LRV 30.3



008 Steel
[weld rod 1287497] LRV 28.6



009 Titanium
[weld rod 1287013] LRV 12.8



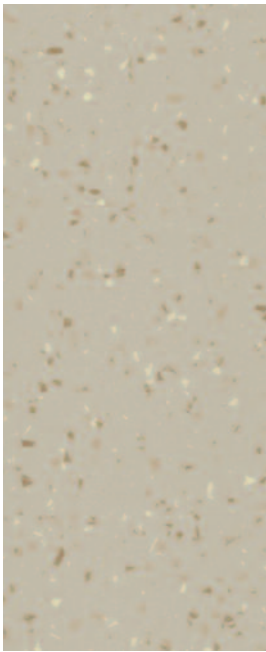
004 Midnight
[weld rod 1287535] LRV 8.4



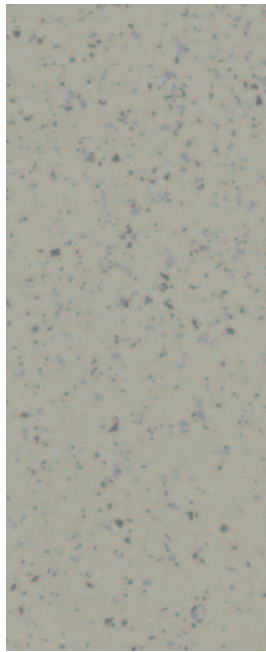
005 Charcoal
[weld rod 1287526] LRV 11.3



SAFETRED ION CONTRAST



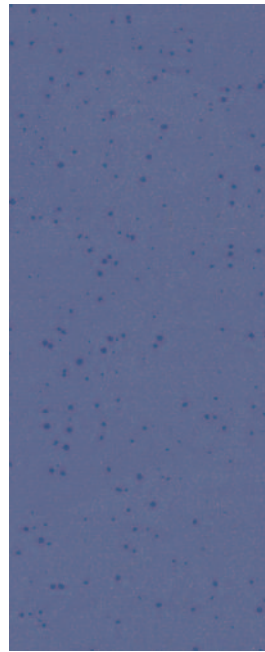
014 Latte
[weld rod 1287078] LRV 48.5



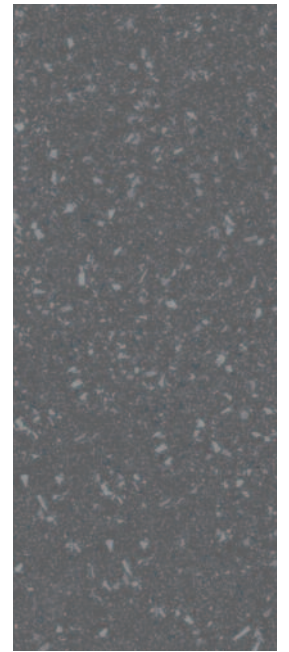
006 Mid grey
[weld rod 1287178] LRV 36.9



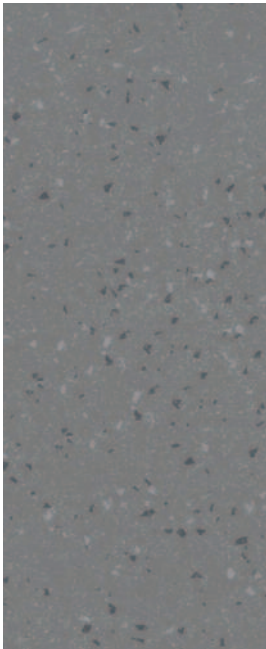
007 Light grey
[weld rod 1287331] LRV 66.8



003 Dark blue
[weld rod 1288307] LRV 19.9



004 Midnight
[weld rod 1287381] LRV 15.1



005 Charcoal
[weld rod 1287183] LRV 22.8



Protectwall

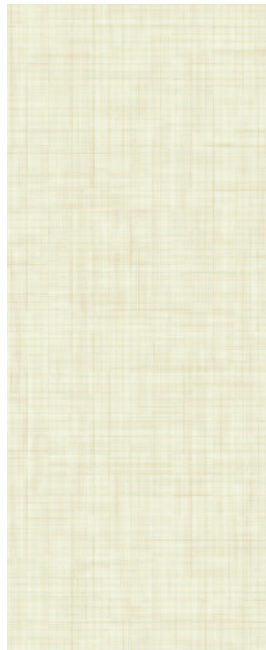
DESIGNED FOR IMPACT

MATCHING SOLUTIONS WITH SAFETRED ION

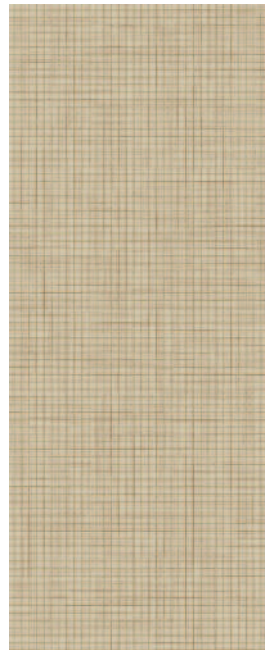
ProtectWALL is a unique high-performance wall covering solution that provides outstanding mechanical resistance. With a choice of 2 thicknesses and a specialist Clean Room product, ProtectWall provides a cost effective solution.



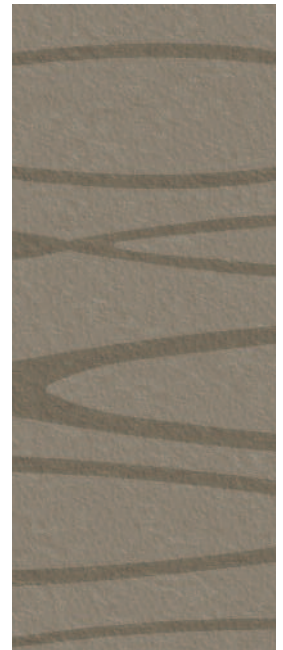
26500011



26500005



26500001



26500020



26501016



26501013



26501009



26501018

PROTECTWALL 1.5

PROTECTWALL 2

MATCHING SOLUTIONS WITH PROTECTWALL

Colour names	Safetred Ion Linen 14 colours	Safetred Ion Contrast	KS61 10 colour	Protectwall 2 9 colour options	Protectwall 1.5 11 colour options
SAP MG	26763 dry back				
Rust	001		1411016	26501001/011	26500005/001/002
Chocolate	015		1411017	26501001	26500005/013/021
Dark Blue	003	x	1411037	26501001/002	26500021
Midnight	004	x	1411007	26501001/009	26500003/4/6/13/021
Charcoal	005	x	1411008	26501001/002/009	26500003/4/6/13
Mid Grey	006	x	1411011	26501001/002/009/003	26500003/4/6/13
Light Grey	007	x	1411012	26501001/002	26500003
Steel	008		1411026	26501012/002/011/001/003	26500003/004/006/013/019/020
Titanium	009		1411013	26501001/012/011	26500006/13/19/20/001/004/005
Heather	010		1411031	26501002/018/001	26500021
Mint	011		1411034	26501001/002/005	26500003/021
Sky Blue	012		1411043	26501001/002/009	26500003
Sand	013		1411027	26501001/007/008/011/003/021/013	26500001/002/005
Latte	014	x	1411021	26501001/008/011/007/003	26500001/002/005

MATCHING SOLUTIONS WITH AQUARELLE WALL HFS CONCEPT

Colour names	Safetred Aqua 10 colours	Aquarelle wetwall HFS 18 colour options
Rust	001	3942037/027/031/054/055
Chocolate	015	3942033/040/041/054/055/041/027/038
Dark Blue	003	3942033/037/034
Light Grey	007	3942037/033/034
Steel	008	3942033/050/052/054/055/034/041/059/061/060/058
Titanium	009	3942050/033/043/034/041/052/059/060/061
Heather	010	3942033/037/034
Mint	011	3942037
Sky Blue	012	3942037/034
Sand	013	3942037/034/041/031/054/055/027/038

Aquarelle Wall HFS

WETROOM WATERPROOF
INSTALLATION

MATCHING SOLUTIONS WITH SAFETRED AQUA

For a complete watertight wetroom installation Tarkett's Aquarelle is the ideal solution – designed to colour coordinate with our wetroom flooring solutions.

- Waterproof installation, ideal for wet commercial applications
- Unique wetroom concept: walls, floors, borders and accessories available in warm and vivid tones to coordinate with Safetred Aqua
- Fire resistant: Bs2 d0
- Hygienic and easy to maintain

Classification	Standards	Aquarelle Wall HFS
Type of floorcovering	EN 259	Heavy duty
Technical characteristics	Standards	Aquarelle Wall HFS
Total thickness	EN ISO 24346 (EN 428)	0.92mm
Wear layer thickness	EN ISO 24340 (EN 429)	0.12mm
Total weight	EN ISO 23997 (EN 430)	1500g/m ²
Technical performances	Standards	Aquarelle Wall HFS
Dimensional stability	EN ISO 23999 (EN 434)	Lengthwise: ≤0.80% Widthwise: ≤0.40%
Reaction to fire	EN 13501-1	B-s2 d0 on gypsum plasterboard and on A1 or A2 substrate
Seam strength	EN 684	≥150 N/50mm
Acoustical absorption	NF EN ISO 354	0.05 (H)
Chemical resistance	EN ISO 26987 (EN 423)	Good resistance
Hygiene	-	Does not contribute to infection spreading

The above information is subject to modifications for the benefit of further improvement (06/2014). For more detailed technical information, please contact Tarkett.



3942043



3942034



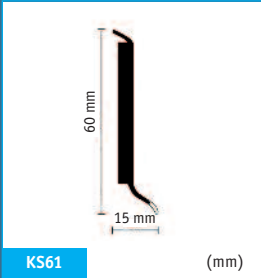
3942059



3942052



Flooring Accessories

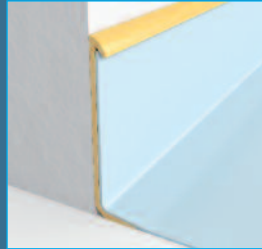


SEMI-FLEXIBLE DECORATIVE SKIRTING

KS61 - PVC semi-rigid skirting for decorative use.

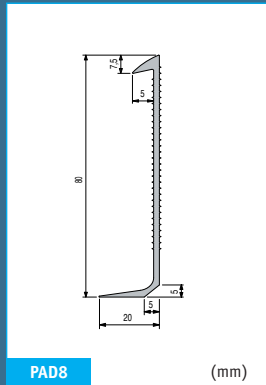
2 IN 1: COVE FORMER & CAPPING

Provides a neat cove allowing floor coverings to be dressed up the wall to form a skirting, supports floor covering at a weak point, and protects the exposed edge.



PVC COVE FORMER

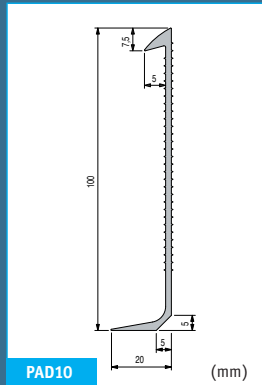
Used to form a cove where floor coverings are continued up the wall. Usually used with a capping seal or cap to finish the raw edge of the floor covering. Delivery: 25 units of 2lm



PAD8

(mm)

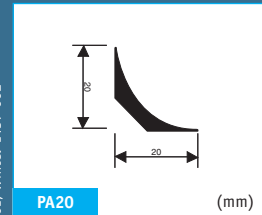
Med. grey: 1438 000. Lgt. grey: 1438 001. White: 1438 002



PAD10

(mm)

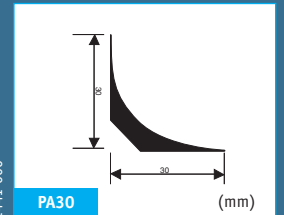
Med. grey: 1437 000. Lgt. grey: 1437 001. White: 1437 002



PA20

(mm)

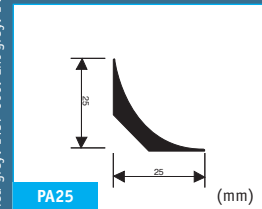
1441 000



PA30

(mm)

1442 000



PA25

(mm)

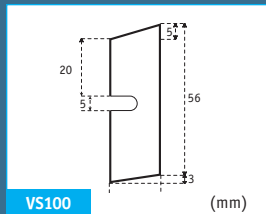
26629 001

*other accessories and colours available, check website for details www.professionals.tarkett.co.uk/products/accessories

VENTILATED SKIRTING

Ventilated skirting made of wood to be painted. To be used in combination with loose lay floorings or with floor coverings on Tarkolay.

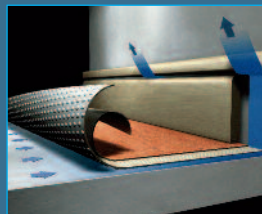
Article code: 1252 030 (unfinished)



VS100

(mm)

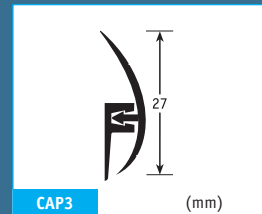
1252 030



PVC CAPPING

Used to finish the top of a resilient floor covering where it has been coved up the wall. Usually used with a cove former.

CAP3: Two-parted, hygienic



CAP3

(mm)

White: 1445 001*



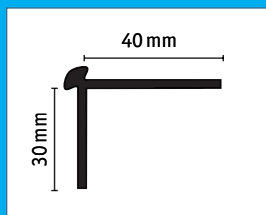
Protectwall Accessories

SET-IN CORNER

Aluminium and flexible PVC outside corners (flexible and solid) used to protect the external corner of walls against impact and provide neat finish. Installed under the wall covering.

CAPS

Aluminium and PVC caps (flexible and solid) to provide a perfect finish and protect the edge of the wall covering.

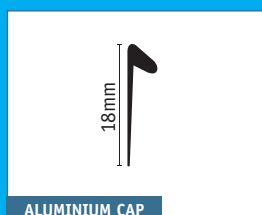


30 mm

40 mm

Silver: 2662 4001*

ALUMINIUM CAP

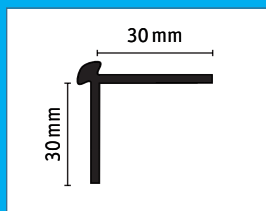


18 mm

Silver: 2662 1001*

ALUMINIUM CAP

Silver: 2662 6001*

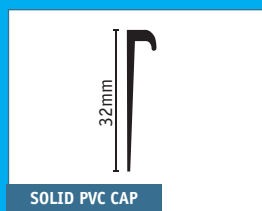


30 mm

30 mm

White: 2662 3004*

SOLID PVC CAP



32 mm

Silver: 2661 9005*

FLEXIBLE PVC CAP

White: 2662 0004*

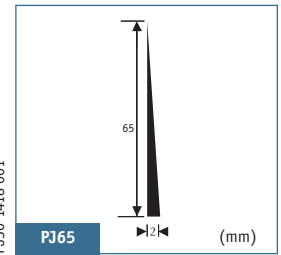
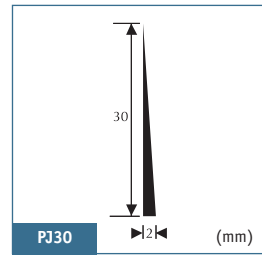
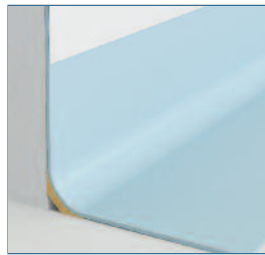
*other accessories and colours available, check website for details www.professionals.tarkett.co.uk/products/accessories

Wetroom Accessories

WETROOM WATERPROOF INSTALLATION

FLEXIBLE JUNCTION PROFILES

Flexible PVC junction profiles for wetrooms. Reduce thickness difference between floor rising to the wall and Aquarelle wall coverings.



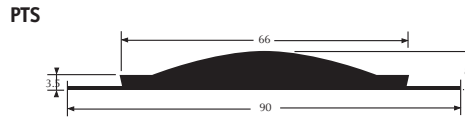
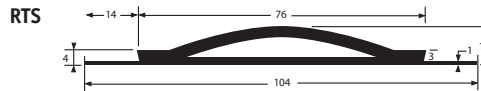
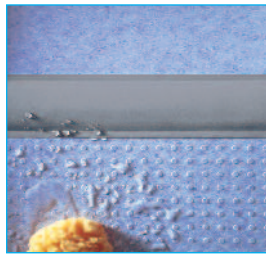
PJ30 1418 001

PJ65 2666 1001

THRESHOLD TRANSITION FOR WETROOMS

Rubber transition profiles for wetrooms.

RTS: Flattens when door closes
PTS: Hot weldable.



Available in one colour
Grey / ref. 1255 748

Available in four colours
Grey / ref. 2666 4001
Dark grey / ref. 2666 4002
White / ref. 2666 4003
Beige / ref. 2666 4004

WATERPROOF PIPE COLLARS

Offer watertight finish for small diameter pipework in a variety of sizes.



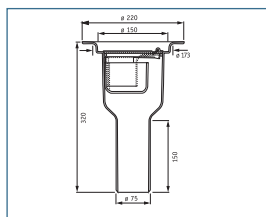
Diameter	Ref	Pack
8 - 12mm	1420 001	*
11 - 15mm	1420 002	*
15 - 19mm	1420 003	*
18 - 22mm	1420 004	*
21 - 26mm	1420 005	*
26 - 31mm	1420 006	*
30 - 35mm	1420 007	*
35 - 42mm	1420 008	**
100 - 127mm	1420 009	***
Adhesive	1460 010	
1 tube = 160lm		
* The first figure indicates the diameter of the upper part; the second indicates the diameter at the groove.		
**24 sleeves + 12 clamps		
***6 sleeves + 3 clamps		
****1 sleeve		

DRAINS

PVC and stainless steel drains and gratings, adapted to various conditions of use: outlet, height, diameter, and outflow.

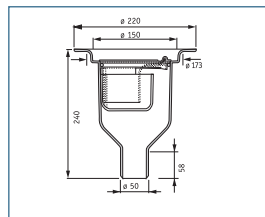
CLASSIC DRAINS - VERTICAL OUTLET, FOUR MODELS

SIPHON PURUS BRAGE 75



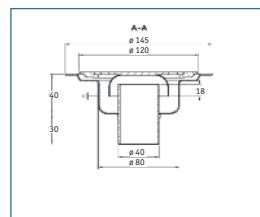
1416 005

SIPHON PURUS BRAGE 50



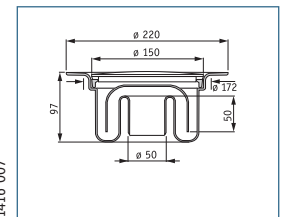
1416 004

SIPHON Stainless Steel 40*



1416 007

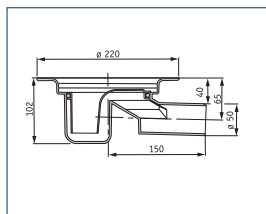
SIPHON PURUS DUSCH Brown 50



1416 001

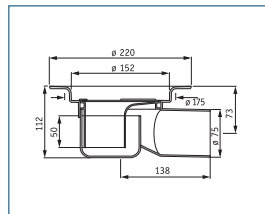
CLASSIC DRAINS - HORIZONTAL OUTLET, THREE MODELS

SIPHON PURUS FREJA 50



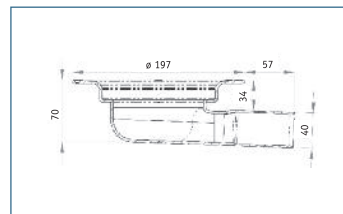
1416 002

SIPHON PURUS ODEN 75



1416 003

SIPHON MINIMAX



1416 006

GRATINGS

PVC



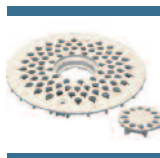
Standard

Ø130 1417 011
Ø150 1417 001



Art Deco

Ø130 2665 8001
Ø150 2665 7001



Drop

Ø130 2665 9001
Ø150 2666 0001

STAINLESS STEEL



Wave

Ø130 2665 3001
Ø150 2665 0001



Drop

Ø130 2665 1001
Ø150 2665 0001



Art Deco

Ø130 1417 013
Ø150 1417 010

Protectwall

HETEROGENEOUS VINYL

Specification

ProtectWALL 1.5 ProtectWALL 2 ProtectWALL 2 CR (Clean Room)

Compact, flexible, calandered, multilayer protection wall covering. In sheet form. Product standard: EN 15102.

Classification	Standards	Protectwall 1.5	Protectwall 2	Protectwall 2 CR (Clean Room)
Type of floorcovering	EN 15102 EN 14644-1	Compact, flexible, calandered, multilayer protection wall covering -	Compact, flexible, calandered, multilayer protection wall covering -	Compact, flexible, calandered, multilayer protection wall covering ISO class 1 GMP class A
Technical characteristics	Standards	Protectwall 1.5	Protectwall 2	Protectwall 2 CR (Clean Room)
Total thickness	EN ISO 24346 - EN 428	1.50 mm	2.00 mm	2.00 mm
Total weight	EN ISO 23997 - EN 430	2400 g/m ²	3000 g/m ²	3000 g/m ²
Transparent wear layer	EN ISO 24340 - EN 429	0.35 mm	0.55 mm	0.55 mm
Surface treatment		TopClean XP™	TopClean XP™	TopClean XP™
Form of delivery	EN ISO 24341 - EN 426 Sheet (rolls)	20 running metres x 200 cm	20 running metres x 200 cm	20 running metres x 200 cm
Technical performances	Standards	Protectwall 1.5	Protectwall 2	Protectwall 2 CR (Clean Room)
Dimensional stability	EN ISO 23999 - EN 434	≤0.80 %	≤0.80 %	≤0.80 %
Reaction to fire	EN 13501-1 BS 476: Part 7	B-s3, d0	B-s3, d0	B-s3, d0
Abrasion	EN 660-2	Group T: ≤2mm ³	Group T: ≤2mm ³	Group T: ≤2mm ³
Thermal resistance	EN 12524	0,02 m ² K/W	0,02m ² K/W	0,02m ² K/W
Electrostatic properties	EN 1815	≤2 kV	≤2 kV	≤2 kV
Curl resultant to heat	EN ISO 23999 - EN 434	≤2mm	≤2mm	≤2mm
Light fastness	EN ISO 105-B02	≥6	≥6	≥6
Resistance to impacts	EN 259-2/ASTM D 4226	Resistant to impacts No visible burst or crack	Resistant to impacts No visible burst nor crack	Resistant to impacts No visible burst nor crack
Scratch resistance	Sclerometer test:	Excellent No visible scratch	Excellent No visible scratch	Excellent No visible scratch
Spongeability washability Lyability brushability	EN 12956	No change in appearance	No change in appearance	No change in appearance
Scuff resistance		Excellent - No visible mark after cleaning	Excellent - No visible mark after cleaning	Excellent - No visible mark after cleaning
Determination of flexibility	EN ISO 24344 - EN 435	No damage, no crack	No damage, no crack	No damage, no crack
Determination of seam strength	EN 684	>400 N/50mm	>400 N/50mm	>400 N/50mm
Hardness Shore A	EN ISO 868	92	94	94
Stain resistance Chemical resistance	EN ISO 26987 - EN 423	Excellent	Excellent	Excellent
Contamination control	EN 14644-1	—	—	ISO Class 1 /GMP class A
Ease of decontamination	EN ISO 8690	—	—	Good
Hygiene		Does not contribute to infection spreading	Does not contribute to infection spreading	Does not contribute to infection spreading
Colours		Tisse: 10 - Vital: 6 Graphic Lines: 2 - Uni: 1	Abstract: 12	Uni: 6

The above information is subject to modifications for the benefit of further improvement. (06/2014)

For more detailed technical information please contact Tarkett. Follow Tarkett's installation and maintenance instruction carefully, available on request.



WELD RODS FOR PROTECTWALL 1.5 & 2/2 CR

1.5	LRV No.	NCS No.	Welding rod No.
26500 001	51.8 %	S 1510-Y	24806 057
26500 002	41.5 %	S 1510-Y10R	24806 058
26500 003	75.2 %	S 0505-R90B	24806 059
26500 004	49.9 %	S 2002-Y	24806 060
26500 005	75.2 %	S 0603-Y20R	24806 061
26500 006	41.7 %	S 2005-Y20R	24806 062
26500 007	6.9 %	S 7020-Y40R	24806 063
26500 008	46.8 %	S 1060-Y10R	24806 064
26500 009	38.3 %	S 1050-G50Y	24806 065
26500 010	31.9 %	S 3020-R90B	24806 066

1.5	LRV No.	NCS No.	Welding rod No.
26500 011	65.1 %	S 0510-Y	24806 067
26500 013	69.2 %	S 0603-G80Y	24806 068
26500 015	46.2 %	S 1060-Y10R	24806 069
26500 016	16.8 %	S 0580-Y80R	24806 070
26500 017	48.6 %	S 1060-G80Y	24806 071
26500 018	10.6 %	S 3060-R90B	24806 072
26500 019	39.5 %	S 5005-Y20R	24806 027
26500 020	19.1 %	S 4005-Y20R	24806 028
26500 021	80.3 %	S 0502-Y	24806 017

2 & 2 CR	LRV No.	NCS No.	Welding rod No.
26501 001	2.6 %	S 0502-Y	24806 017
26501 002	56.6 %	S 1000-N	24806 085
26501 003	63.9 %	S 0804-G90Y	24806 086
26501 004	53.9 %	S 1015-Y30R	24806 087
26501 005	47.1 %	S 1515-G60Y	24806 088
26501 006	40.1 %	S 1515-B	24806 089
26501 007	46.1 %	S 1515-Y20R	24806 073
26501 008	37.7 %	S 3020-Y10R	24806 074
26501 009	57.6 %	S 1500-N	24806 075

2 & 2 CR	LRV No.	NCS No.	Welding rod No.
26501 010	42.5 %	S 2500-N	24806 076
26501 011	52.7 %	S 1005-Y20R	24806 077
26501 012	35.6 %	S 3010-Y20R	24806 078
26501 013	16.3 %	S 4040-R90B	24806 079
26501 014	49.3 %	S 0580-Y10R	24806 080
26501 015	31.2 %	S 0570-Y50R	24806 081
26501 016	48.9 %	S 1060-G80Y	24806 082
26501 017	16.1 %	S 2060-R	24806 083
26501 018	20.1 %	S 5020-R50B	24806 084

VINYL FLOORCOVERING WITH ENHANCED SLIP RESISTANCE

Safetred Ion/Aqua

Specification

SAFETRED AQUA

Compact, flexible floorcovering, glass fibre reinforced with particle enhanced slip resistance. Safety clean polyurethane protection in sheet form. Product standard EN 13845.

SAFETRED ION

Compact, flexible vinyl floorcovering, glass fibre reinforced with particle enhanced slip resistance and decorative flakes. Safety clean polyurethane protection in sheet form. Product standard EN 13845

Tarkett's commitments to VOC* emissions

Volatile organic compounds (VOCs) are emitted as gases from man made materials such as flooring as well as natural ones like trees. To improve indoor air quality, Tarkett has invested significantly in the research of raw materials and flooring manufacturing processes to reach near zero emission levels. Since September 2011, all Tarkett's homogeneous vinyl flooring has emissions below quantifiable level - measuring less than 100 µg/m³ TVOC after 28 days*. All other commercial floorings that Tarkett manufactures currently release less than 100 µg/m³ TVOC after 28 days - ten times lower than European standards. We'll continue to focus on safer, healthier solutions to reduce emission levels across all products, for improved indoor air quality and a healthier quality of life.

* ISO standards 16000-3/-6/-9/-11

Classification	Standards	Safetred Aqua	Safetred Ion Compact	Safetred Ion Loose Lay (LL)	Safetred Ion Acoustic
Type of floorcovering	EN 13845	PVC Floorcovering with particle enhanced slip resistance	PVC Floorcovering with particle enhanced slip resistance	PVC Floorcovering with particle enhanced slip resistance	PVC Floorcovering with particle enhanced slip resistance
Classification	EN 685/EN ISO 10874	Commercial very heavy 34	Commercial very heavy 34 Light industrial heavy 43	Commercial very heavy 34 Light industrial heavy 43	Commercial very heavy 34 Light industrial heavy 43
	EN 13845 Annex C	Esb barefoot Esf shod	Esf	Esf	Esf
Technical characteristics	Standards	Safetred Aqua	Safetred Ion Compact	Safetred Ion Loose Lay (LL)	Safetred Ion Acoustic
Total thickness	EN 428/ISO 24346	2.0mm	2.0mm	2.35mm	3.5mm
Total weight	EN 430/ISO 23997	3275g/m²	3340g/m²	3410g/m²	3750g/m²
Form of delivery	EN 426/ISO 24341	Rolls: 20lm x 2m Compact: 26769	Rolls: 20lm x 2m Contrast: 26766 Linen: 26763	Rolls: 15lm x 2m Contrast: 26767 Linen: 26764	Rolls: 15lm x 2m Contrast: 26768 Linen: 26765
		--- (3 digit colour no.)	--- (3 digit colour no.)	--- (3 digit colour no.)	--- (3 digit colour no.)
Technical performances	Standards	Safetred Aqua	Safetred Ion Compact	Safetred Ion Loose Lay (LL)	Safetred Ion Acoustic
PUR reinforcement		Safety Clean XP	Safety Clean XP	Safety Clean XP	Safety Clean XP
Abrasion group	EN 13845 Annex D	≤10% Particle loss after 50,000 cycles	≤10% Particle loss after 50,000 cycles	≤10% Particle loss after 50,000 cycles	≤10% Particle loss after 50,000 cycles
		Residual indentation	EN 433/ISO 24343-1	<0.10mm	<0.10mm
Castor chair test	EN 425	No Damage	No Damage	No Damage	No Damage
Furniture leg	EN 424	No Damage	No Damage	No Damage	No Damage
Dimensional stability	EN 434/ISO 23999	≤0.4%	≤0.4%	≤0.4%	≤0.4%
Curl resistance to heat	EN 434/ISO 23999	≤2mm	≤2mm	≤2mm	≤2mm
Reaction to fire	EN 13501-1	Bfl s1 on concrete	Bfl s1 on concrete	Cfl s1 on concrete	Cfl s1 on concrete
Slip resistance	BS 7976-2 TRRL Pendulum 4S (Wet) BS 7976-2 Surface Roughness (Rz) DIN 51130 DIN 51097	≥36	≥36	≥36	≥36
		>20µm	>20µm	>20µm	>20µm
		-	R10	R10	R10
		B	-	-	-
Electrostatic properties	EN 1815 EN 1081 EN 14041	<2kV on concrete	<2kV on concrete	<2kV on concrete	<2kV on concrete
		<10 ⁹ Ω on concrete	<10 ⁹ Ω on concrete	<10 ⁹ Ω on concrete	<10 ⁹ Ω on concrete
		Antistatic on concrete	Antistatic on concrete	Antistatic on concrete	Antistatic on concrete
Impact sound reduction	EN ISO 717/2	Δ LW = 4dB	Δ LW = 4dB	Δ LW = 11dB	Δ LW = 19dB
Acoustic improvement	NF S 31-074-Ln,e,w	76dB	76dB	70dB	61dB
Light fastness	EN ISO 105-B02	7	7	7	7
Chemical resistance	EN 423/ISO 26987	Good resistance	Good resistance	Good resistance	Good resistance
Thermal resistance	EN 12524	0.01m² K/W	0.01m² K/W	0.01m² K/W	0.04m² K/W
Underfloor heating	BS 8203	Suitable-Max 27°C	Suitable-Max 27°C	Suitable-Max 27°C	Suitable-Max 27°C
Colours		10	6 Contrast 14 Linen	6 Contrast* 14 Linen*	6 Contrast* 14 Linen*

* Available on request. The above information is subject to modifications for the benefit of further improvement. (06/2014)
For more detailed technical information please contact Tarkett. Follow Tarkett's installation and maintenance instruction carefully, available on request.

SAFETRED AQUA

Safety floors to EN 13845 have a generic A+ environmental rating in major use areas such as healthcare and education. www.bre.co.uk/greenguide

According to European Classification EN 685

CE EN 14041:2004 Manufactured by: Tarkett Limited, ME17 2QX, Lenham, Maidstone, Kent, UNITED KINGDOM EN 13845 Safetred Aqua

SAFETY CLEAN XP (PUR REINFORCED)

TRRL Pendulum 4S >36

BETTER INDOOR AIR QUALITY

SGS

SAFETRED ION

Safety floors to EN 13845 have a generic A+ environmental rating in major use areas such as healthcare and education. www.bre.co.uk/greenguide

According to European Classification EN 685

CE EN 14041:2004 Manufactured by: Tarkett Limited, ME17 2QX, Lenham, Maidstone, Kent, UNITED KINGDOM EN 13845 Safetred Ion

SAFETY CLEAN XP (PUR REINFORCED)

TRRL Pendulum 4S >36

BETTER INDOOR AIR QUALITY

SGS

Tarkett Limited Lenham, Maidstone, Kent ME17 2QX, United Kingdom. Tel 01622 854040 Fax 01622 854520 www.tarkett.co.uk Email: uksales@tarkett.com



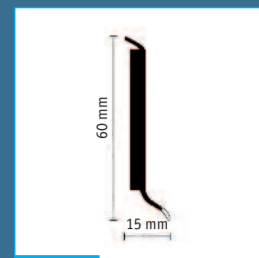
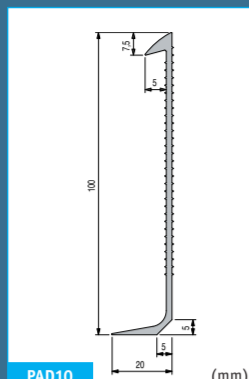
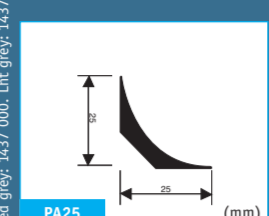
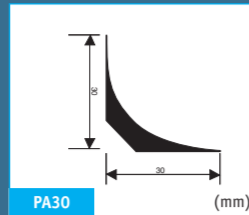
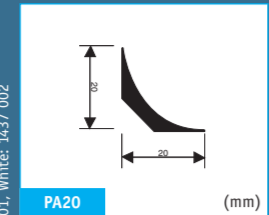
www.tarkett.co.uk

Flooring Accessories

2 IN 1: COVE FORMER & CAPPING
Provides a neat cove allowing floor coverings to be dressed up the wall to form a skirting, supports floor covering at a weak point, and protects the exposed edge.

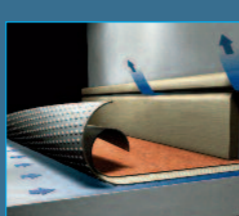
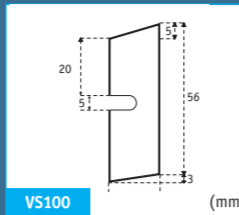


PVC COVE FORMER
Used to form a cove where floor coverings are continued up the wall. Usually used with a capping seal or cap to finish the raw edge of the floor covering. Delivery: 25 units of 2lm

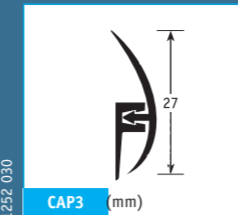


KS61 - PVC semi-rigid skirting for decorative use.

VENTILATED SKIRTING
Ventilated skirting made of wood to be painted. To be used in combination with loose lay floorings or with floor coverings on kerolay. Article code: 1252 030 (unfinished)

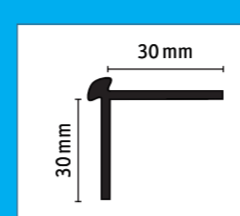
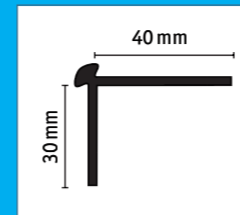


PVC CAPPING
Used to finish the top of a resilient floor covering where it has been covered up the wall. Usually used with a cove-former. CAP3: Two-parted, hygienic

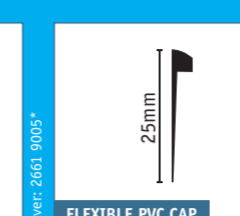
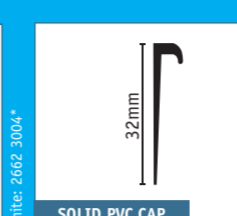


PROTECTWALL ACCESSORIES

SET-IN CORNER
Aluminium and flexible PVC outside corners (flexible and solid) used to protect the external corner of walls against impact and provide neat finish. Installed under the wall covering.



CAPS
Aluminium and PVC caps (flexible and solid) to provide a perfect finish and protect the edge of the wall covering.



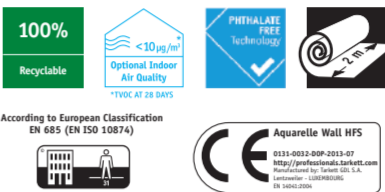
Aquarelle Wall HFS

WETROOM WATERPROOF INSTALLATION

MATCHING SOLUTIONS WITH SAFETRED AQUA

For a complete watertight wetroom installation Tarkett's Aquarelle is the ideal solution – designed to colour co-ordinate with our wetroom flooring solutions.

- Waterproof installation, ideal for wet commercial applications
- Unique wetroom concept: walls, floors, borders and accessories available in warm and vivid tones to co-ordinate with Safetred Aqua
- Fire resistant: Bs2 d0
- Hygienic and easy to maintain



Classification	Standards	Aquarelle Wall HFS
Type of floorcovering	EN 259	Heavy duty
Technical characteristics		Aquarelle Wall HFS
Total thickness	EN ISO 24346 (EN 428)	0.92mm
Wear layer thickness	EN ISO 24340 (EN 429)	0.12mm
Total weight	EN ISO 23997 (EN 430)	1500g/m ²
Technical performances		Aquarelle Wall HFS
Dimensional stability	EN ISO 23999 (EN 434)	Lengthwise: ≤0.80% Widthwise: ≤0.40%
Reaction to fire	EN 13501-1	B-s2 d0 on gypsum plasterboard and on A1 or A2 substrate
Seam strength	EN 684	≥150 N/50mm
Acoustical absorption	NF EN ISO 354	0.05 (H)
Chemical resistance	EN ISO 26987 (EN 423)	Good resistance
Hygiene	-	Does not contribute to infection spreading

The above information is subject to modifications for the benefit of further improvement (06/2014). For more detailed technical information, please contact Tarkett.

Protectwall

DESIGNED FOR IMPACT

MATCHING SOLUTIONS WITH SAFETRED ION

ProtectWall is a unique high-performance wall covering solution that provides outstanding mechanical resistance. With a choice of 2 thicknesses and a specialist Clean Room product, ProtectWall provides a cost effective solution.



MATCHING SOLUTIONS WITH PROTECTWALL

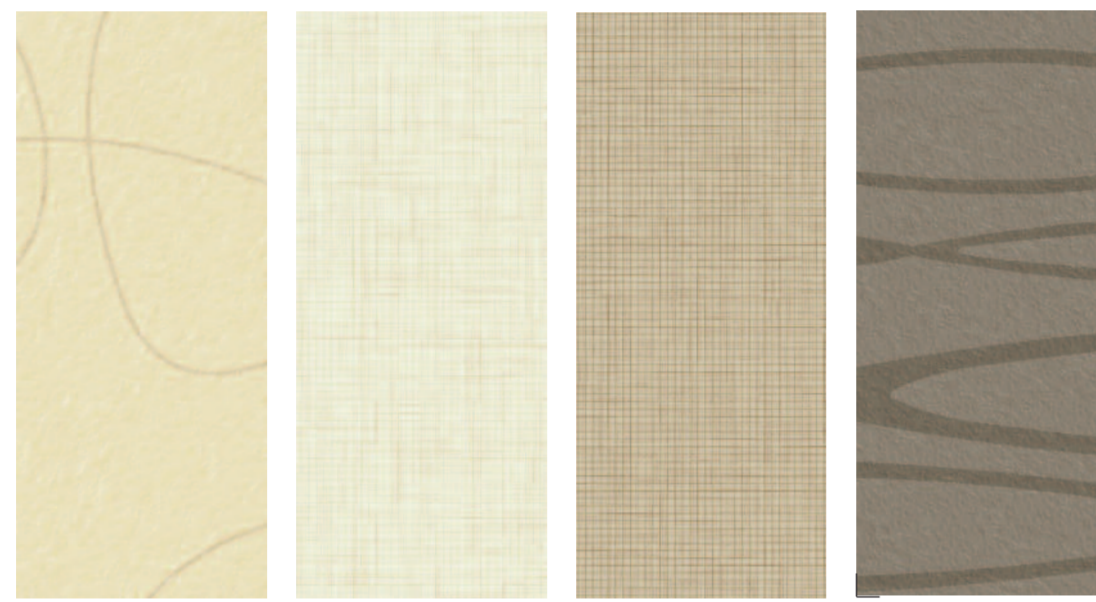
Colour names	Safetred Ion	Linea 14 colours	Safetred Ion Contrast	KS61 10 colour	Protectwall 2 9 colour options	Protectwall 1.5 11 colour options
Rust	001	x	x	x	x	x
Chocolate	015	x	x	x	x	x
Dark Blue	003	x	x	x	x	x
Midnight	004	x	x	x	x	x
Charcoal	005	x	x	x	x	x
Mid Grey	006	x	x	x	x	x
Light Grey	007	x	x	x	x	x
Steel	008	x	x	x	x	x
Titanium	009	x	x	x	x	x
Heather	010	x	x	x	x	x
Mint	011	x	x	x	x	x
Sky Blue	012	x	x	x	x	x
Sand	013	x	x	x	x	x
Latte	014	x	x	x	x	x

MATCHING SOLUTIONS WITH AQUARELLE WALL HFS CONCEPT

Colour names	Safetred Aqua	10 colours	Aquarelle wall HFS 18 colour options
Rust	001	x	x
Chocolate	015	x	x
Dark Blue	003	x	x
Light Grey	007	x	x
Steel	008	x	x
Titanium	009	x	x
Heather	010	x	x
Mint	011	x	x
Sky Blue	012	x	x
Sand	013	x	x

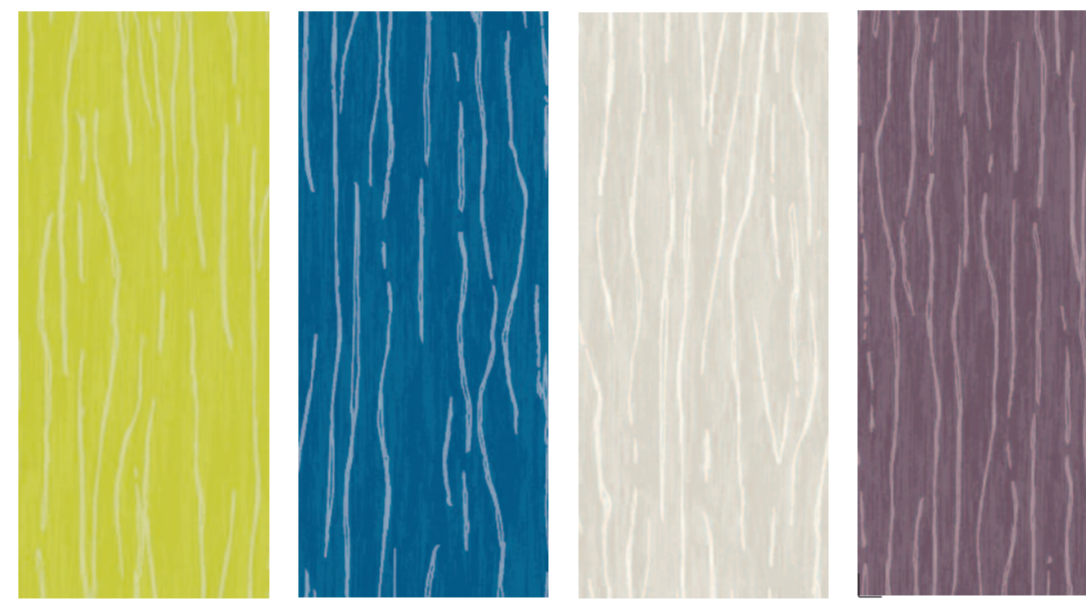
PROTECTWALL

PROTECTWALL 1.5



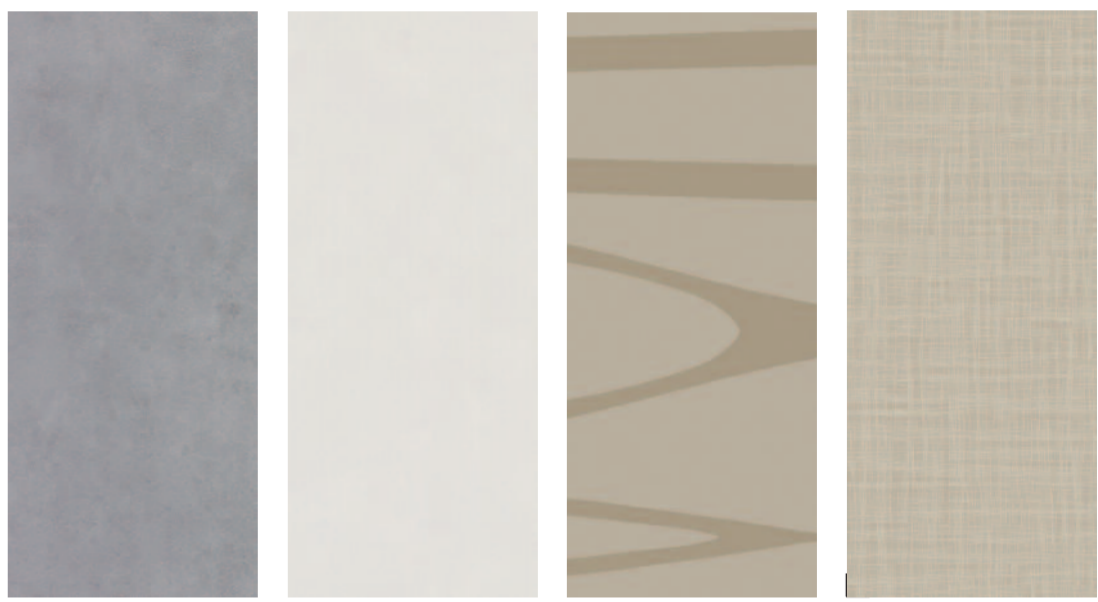
Other colours and designs available

PROTECTWALL 2



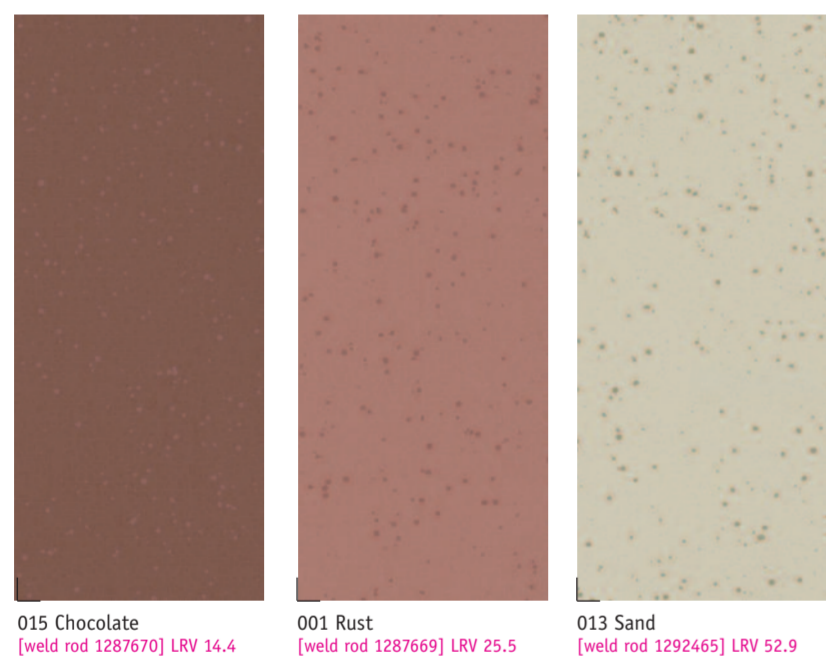
Other colours and designs available

AQUARELLE



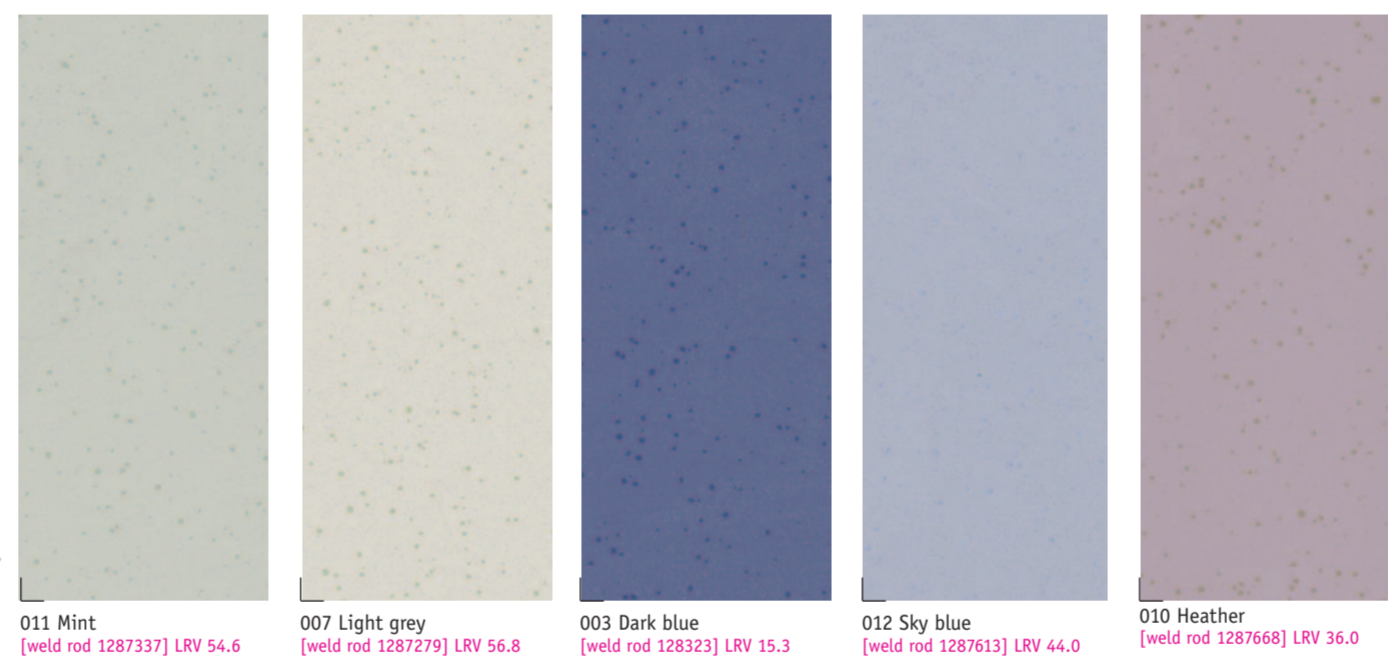
Other colours and designs available

AQUA



015 Chocolate [weld rod 1287670] LRV 14.4
001 Rust [weld rod 1287669] LRV 25.5
013 Sand [weld rod 1292465] LRV 52.9

AQUA



011 Mint [weld rod 1287337] LRV 54.6
007 Light grey [weld rod 1287279] LRV 56.8
003 Dark blue [weld rod 128323] LRV 15.3
012 Sky blue [weld rod 1287613] LRV 44.0
010 Heather [weld rod 1287668] LRV 36.0

AQUA



008 Steel [weld rod 1287501] LRV 34.5
009 Titanium [weld rod 1287546] LRV 15.9

LINEN



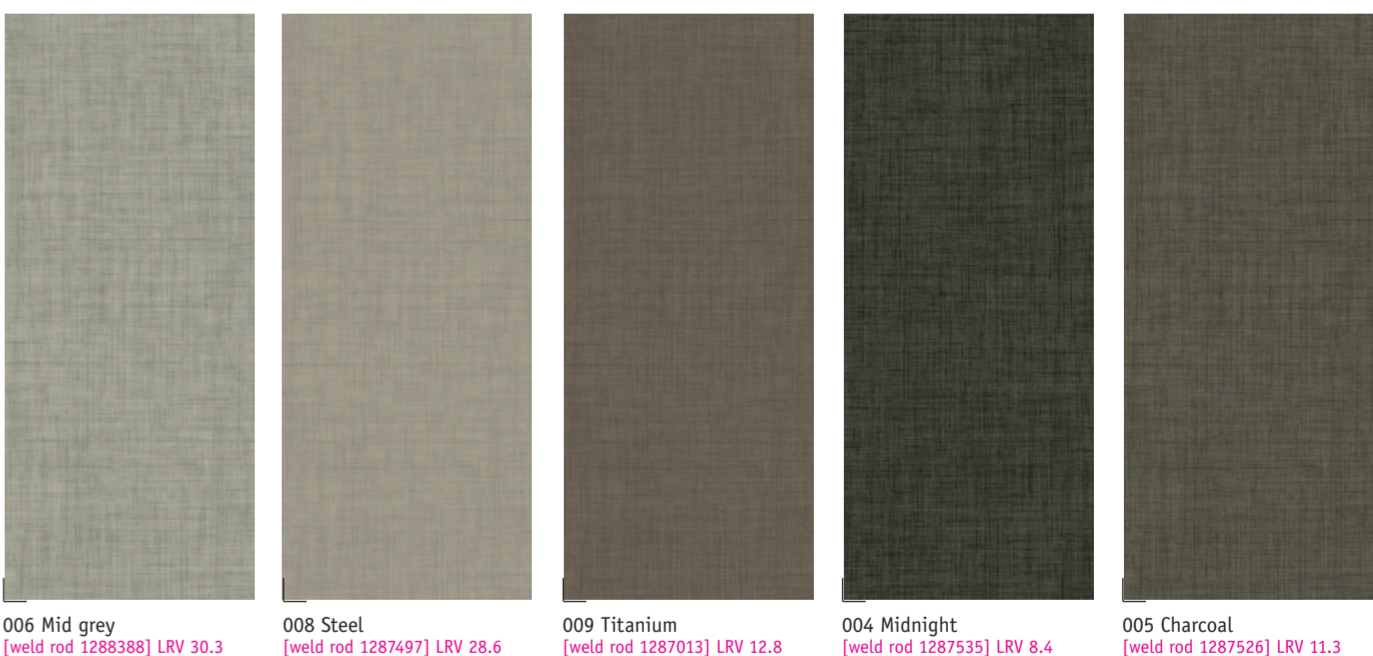
015 Chocolate [weld rod 1287478] LRV 11.1
001 Rust [weld rod 1287665] LRV 16.9
013 Sand [weld rod 1287557] LRV 40.3
014 Latte [weld rod 1287501] LRV 35.8

LINEN



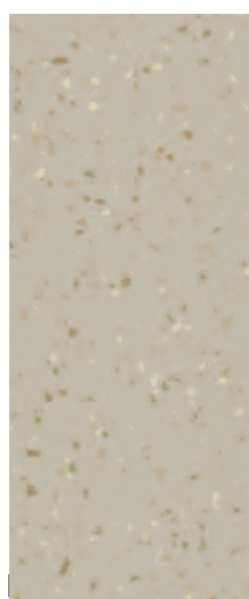
011 Mint [weld rod 1287049] LRV 47.0
007 Light grey [weld rod 1292455] LRV 51.7
003 Dark blue [weld rod 1287666] LRV 9.4
012 Sky blue [weld rod 1287383] LRV 38.4
010 Heather [weld rod 1287667] LRV 33.6

LINEN



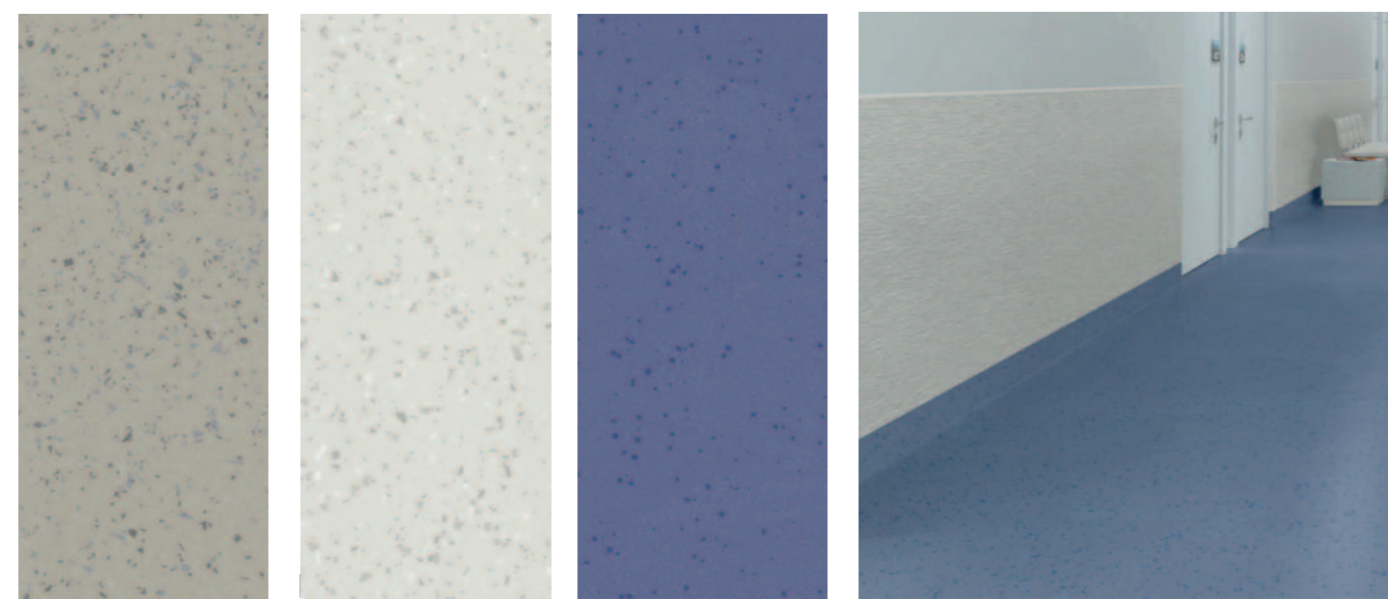
006 Mid grey [weld rod 1286388] LRV 30.3
008 Steel [weld rod 1287497] LRV 28.6
009 Titanium [weld rod 1287013] LRV 12.8
004 Midnight [weld rod 1287535] LRV 8.4
005 Charcoal [weld rod 1287526] LRV 11.3

CONTRAST

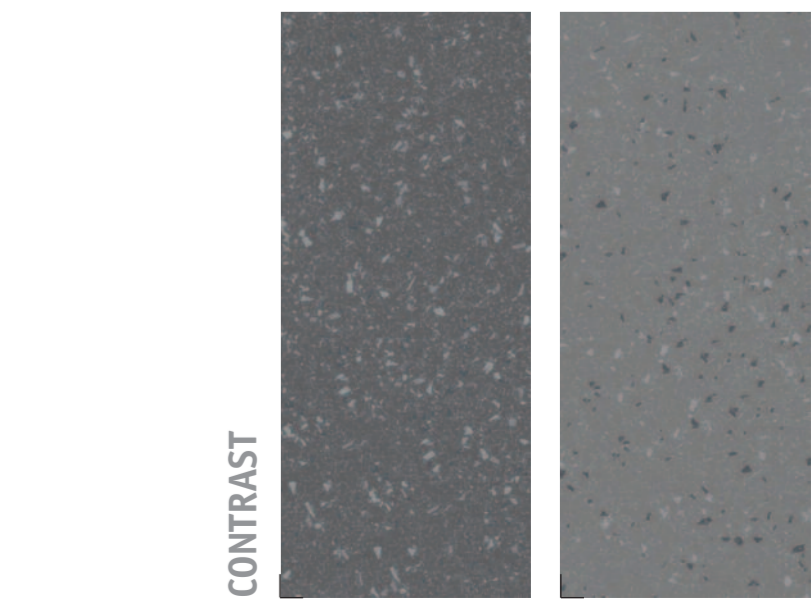


014 Latte [weld rod 1287078] LRV 48.5

CONTRAST



006 Mid grey [weld rod 1287178] LRV 36.9
007 Light grey [weld rod 1287331] LRV 66.8
003 Dark blue [weld rod 1288307] LRV 19.9



004 Midnight [weld rod 1287381] LRV 15.1
005 Charcoal [weld rod 1287183] LRV 22.8